



CONTAINS 100% JUICE

Nutrition Facts

8 servings per container
Serving size **8 fl oz (240mL)**

Amount per serving
Calories 140

	% Daily Value*
Total Fat 0g	0%
Saturated Fat 0g	0%
Trans Fat 0g	
Cholesterol 0mg	0%
Sodium 35mg	1%
Total Carbohydrate 35g	13%
Dietary Fiber 0g	0%
Total Sugars 31g	
Includes 0g Added Sugars	0%
Protein 0g	
Vitamin D 0mcg 0%	• Calcium 30mg 2%
Iron 0mg 0%	• Potassium 220mg 4%
Vitamin C 108mg 120%	

*The % Daily Value tells you how much a nutrient in a serving of food contributes to a daily diet. 2,000 calories a day is used for general nutrition advice.

INGREDIENTS: GRAPE, GRAPEBERRY AND APPLE JUICES FROM CONCENTRATE (FILTERED WATER, GRAPE, GRAPEBERRY AND APPLE JUICE CONCENTRATES), ASCORBIC ACID (VITAMIN C), NATURAL FLAVORS.

DISTRIBUTED BY THE KROGER CO. CINCINNATI, OHIO 45202
CHILL AND SHAKE WELL BEFORE SERVING
REFRIGERATE AFTER OPENING
PASTEURIZED



PLEASE RECYCLE



3, 7, 8



5

74101-061721

Nutrition Facts

22 servings per container
Serving size 1 Slice (26g/0.9oz)

Amount per serving
Calories 60

	% Daily Value*
Total Fat 1g	1%
Saturated Fat 0g	0%
Trans Fat 0g	
Polyunsaturated Fat 0g	
Monounsaturated Fat 0g	
Cholesterol 0mg	0%
Sodium 140mg	6%
Total Carbohydrate 11g	4%
Dietary Fiber 2g	3%
Total Sugars 2g	
Includes 2g Added Sugars	4%
Protein 3g	
Vitamin D 0mcg	0%
Calcium 30mg	2%
Iron 0.6mg	4%
Potassium 60mg	0%
Thiamin 0.14mg	10%
Riboflavin 0.04mg	2%
Niacin 0.8mg	6%
Folate 5mcg DFE (0mcg folic acid)	0%

*The % Daily Value (DV) tells you how much a nutrient in a serving of food contributes to a daily diet. 2,000 calories a day is used for general nutrition advice.

INGREDIENTS: WHOLE WHEAT FLOUR, WATER, BROWN SUGAR, YEAST, WHEAT GLUTEN, CONTAINS 2% OR LESS OF EACH OF THE FOLLOWING: SALT, SOYBEAN OIL, CULTURED WHEAT FLOUR, VINEGAR, MONOGLYCERIDES, ENZYMES, MONOCALCIUM PHOSPHATE, ASCORBIC ACID, SOY LECTHIN. TOPPED WITH WHEAT BRAN. 741-081321

INGREDIENTS: MILK, LIQUID SUGAR (SUGAR, WATER), LESS THAN 1% OF COCOA (PROCESSED WITH ALKALI), CORN STARCH, SALT, CARRAGEENAN, NATURAL FLAVOR, NONFAT MILK, VITAMIN D3.

DISTRIBUTED BY: DFA DAIRY BRANDS, LLC, KANSAS CITY, KS 66111
trumoo.com

COMMENTS? 1-800-395-7004
GRADE A • PASTEURIZED • HOMOGENIZED
PLANT # STAMPED ABOVE
KEEP REFRIGERATED
SHAKE WELL

*No significant difference has been shown in milk from cows treated with the artificial growth hormone rbST and non rbST treated cows.





5



5

74101-061721

Nutrition Facts

22 servings per container
Serving size 1 Slice (26g/0.9oz)

Amount per serving
Calories 60

	% Daily Value*
Total Fat 1g	1%
Saturated Fat 0g	0%
Trans Fat 0g	
Polyunsaturated Fat 0g	
Monounsaturated Fat 0g	
Cholesterol 0mg	0%
Sodium 140mg	6%
Total Carbohydrate 11g	4%
Dietary Fiber 2g	3%
Total Sugars 2g	
Includes 2g Added Sugars	4%
Protein 3g	
Vitamin D 0mcg	0%
Calcium 30mg	2%
Iron 0.6mg	4%
Potassium 60mg	0%
Thiamin 0.14mg	10%
Riboflavin 0.04mg	2%
Niacin 0.8mg	6%
Folate 5mcg DFE (0mcg folic acid)	0%

*The % Daily Value (DV) tells you how much a nutrient in a serving of food contributes to a daily diet. 2,000 calories a day is used for general nutrition advice.

INGREDIENTS: WHOLE WHEAT FLOUR, WATER, BROWN SUGAR, YEAST, WHEAT GLUTEN, CONTAINS 2% OR LESS OF EACH OF THE FOLLOWING: SALT, SOYBEAN OIL, CULTURED WHEAT FLOUR, VINEGAR, MONOGLYCERIDES, ENZYMES, MONOCALCIUM PHOSPHATE, ASCORBIC ACID, SOY LECITHIN. TOPPED WITH WHEAT BRAN. 741-081321

209-601-081117

Nutrition Facts

10 servings per container
Serving size 2 Slices (57g/2.0oz)

Amount per serving
Calories 140

	% Daily Value*
Total Fat 1.5g	2%
Saturated Fat 0g	0%
Trans Fat 0g	
Polyunsaturated Fat 0.5g	
Monounsaturated Fat 0g	
Cholesterol 0mg	0%
Sodium 160mg	8%
Total Carbohydrate 29g	10%
Dietary Fiber 2g	6%
Total Sugars 5g	
Includes 5g Added Sugars	9%
Protein 4g	
Vitamin D 3.3mcg	15%
Calcium 360mg	30%
Iron 2.3mg	15%
Potassium 0mg	0%
Thiamin 0.3mg	30%
Riboflavin 0.2mg	20%
Niacin 2.2mg	15%
Folate 115mcg DFE (65mcg folic acid)	30%

*The % Daily Value (DV) tells you how much a nutrient in a serving of food contributes to a daily diet. 2,000 calories a day is used for general nutrition advice.

INGREDIENTS: UNBLEACHED ENRICHED FLOUR (WHEAT FLOUR, MALTED BARLEY FLOUR, NIACIN, THIAMIN MONONITRATE, REDUCED IRON, UNBLEACHED ENRICHED FLOUR, NIACIN, THIAMIN MONONITRATE, FERROUS SULFATE, WATER, BROWN SUGAR, YEAST, WHEAT GLUTEN, CONTAINS 2% OR LESS OF EACH OF THE FOLLOWING: SALT, SOYBEAN OIL, CULTURED WHEAT FLOUR, VINEGAR, MONOGLYCERIDES, ENZYMES, MONOCALCIUM PHOSPHATE, ASCORBIC ACID, SOY LECITHIN. TOPPED WITH WHEAT BRAN. 741-081321

DISTRIBUTED BY
FLOWERS BAKERIES, LLC
THOMASVILLE, GA 31757

*The % Daily Value (DV) tells you how much a nutrient in a serving of food contributes to a daily diet. 2,000 calories a day is used for general nutrition advice.

Ingredients: Unbleached enriched flour (wheat flour, malted barley flour, niacin, reduced iron, thiamin mononitrate, riboflavin, folic acid), water, sugar, yeast, contains 2% or less of each of the following: calcium carbonate, wheat gluten, soybean oil, salt, dough conditioners (contains one or more of the following: sodium stearoyl lactylate, calcium stearoyl lactylate, monoglycerides, mono-and diglycerides, distilled monoglycerides, calcium peroxide, calcium iodate, datem, ethoxylated mono- and diglycerides, enzymes, ascorbic acid), vinegar, monocalcium phosphate, citric acid, cholecalciferol (vitamin D3), soy lecithin, calcium propionate (to retard spoilage).



8



8



Ingredients: CONCORD GRAPES, CORN SYRUP, HIGH FRUCTOSE CORN SYRUP, FRUIT PECTIN, CITRIC ACID, SODIUM CITRATE

Nutrition Facts
 About 25 servings per container
 Serv. size 1 tbsp (20g)
 Amount per serving
Calories 50

	% Daily Value
Total Fat 0g	0%
Sodium 0mg	0%
Total Carb. 13g	5%
Total Sugars 10g	
Incl. 9g Added Sugars	18%
Protein 0g	

Not a significant source of sat. fat, trans fat, choles., fiber, vit. D, calcium, iron and potas.

©2019 Welch's Concord, MA 01742
 MADE IN USA. Refrigerate After Opening.
 Call 1-800-340-6870 weekdays 9 am - 4 pm ET
 Comments or Questions?



INSTRUCTIONS:
 TWIST TO OPEN
 FOR BEST FLAVOR
 REFRIGERATE
 AFTER OPENING
 BEST WHEN
 PURCHASED BY
 DATE ON LABEL

Follow us on:
 [Social Media Icons]

13 OCT 2019
 002137

SWEET BABY RAY'S
 GOURMET SAUCES
ORIGINAL

The award-winning sauce that has been dominating grill pits and dinner tables since its birth in the Windy City in 1985. Pop a cap and pour it on thick. **"The Sauce is the Boss."**

Nutrition Facts
 About 21 servings per container
 Serving size 2 Tbsp (36g)
 Calories per serving **70**

Amount/Serving	% Daily Value
Total Fat 0g	0%
Sat. Fat 0g	0%
Trans Fat 0g	0%
Cholesterol 0mg	0%
Sodium 290mg	13%
Vitamin D 0%	Calcium 0%
Iron 0%	Potassium 0%

Amount/Serving	% Daily Value
Total Carb. 18g	7%
Fiber 0g	0%
Total Sugars 17g	
Incl. 16g Added Sugars	32%
Protein 0g	

INGREDIENTS: HIGH FRUCTOSE CORN SYRUP, DISTILLED VINEGAR, TOMATO PASTE, MODIFIED CORN STARCH, CONTAINS LESS THAN 2% OF SAUCE, PEPPER, GARLIC, ONION, SALT, NATURAL SMOKE FLAVOR, SPICE, CARAMEL COLOR, MOLASSES, SODIUM BENZOATE, PRESERVATIVE, GARLIC, MUSTARD FLOUR, CORN SYRUP, SUGAR, TAMARIND, NATURAL FLAVOR, CELERY SEED, *DRIED.

Sweet Baby Ray's
 P.O. Box 31150 Chicago, IL 60631-0250
 www.sweetbabyrays.com
 1-877-729-2229
GLUTEN FREE

03
 113409 35231



8



8

Nutrition Facts

32 servings per container
Serving size 1 pouch (26g)

Amount per serving
Calories 90

	Amount per serving	% Daily Value*
Total Fat	0.5g	1%
Saturated Fat	0g	0%
Trans Fat	0g	
Cholesterol	0mg	0%
Sodium	15mg	1%
Total Carbohydrate	20g	7%
Dietary Fiber	0g	0%
Total Sugars	12g	
Includes 12g Added Sugars		25%

Protein	0g	
Vitamin D	0mcg	0%
Calcium	0mg	0%
Iron	0mg	0%
Potassium	0mg	0%
Vitamin C	60mg	70%

* The % Daily Value tells you how much a nutrient in a serving of food contributes to a daily diet. 2,000 calories a day is used for general nutrition advice.

Calories per gram:
Fat 9 • Carbohydrate 4 • Protein 4

INGREDIENTS: SUGAR, CORN SYRUP, MODIFIED FOOD STARCH (CORN), APPLE JUICE CONCENTRATE, CORNSTARCH, CANOLA OIL, CITRIC ACID, NATURAL AND ARTIFICIAL FLAVORS, ASCORBIC ACID (VITAMIN C), SODIUM CITRATE, WHITE MINERAL OIL, CARNAUBA WAX, RED 40, BLUE 1, YELLOW 6, YELLOW 5.

MAY CONTAIN TRACES OF MILK, EGGS, ALMONDS, COCONUT, PEANUTS AND SOY.
DISTRIBUTED BY: Waj-Mart Stores, Inc., Bentonville, AR 72716

KEEP KIDS SAFE. TO AVOID CHOKING, ONLY GIVE TO CHILDREN WHO CAN EASILY CHEW AND SWALLOW FOODS. CHILDREN SHOULD BE SEATED AND SUPERVISED WHILE EATING.

Nutrition Facts

About 14 servings per container
Serving size 2 tbsp (24g)

Amount per serving
Calories 100

	Amount per serving	% Daily Value*
Total Fat	5g	7%
Saturated Fat	3g	14%
Trans Fat	0g	
Cholesterol	0mg	0%
Sodium	25mg	1%
Total Carbohydrate	14g	5%
Dietary Fiber	0g	0%
Total Sugars	13g	
Includes 13g Added Sugars		27%

* The % Daily Value tells you how much a nutrient in a serving of food contributes to a daily diet. 2,000 calories a day is used for general nutrition advice.

Ingredients: Sugar, Palm Oil, Water, Corn Syrup, Corn Starch. Contains 2% or less of:

Hydrogenated Palm Oil, Monoglycerides, Cellulose Gel, Salt, Polysorbate 80, Sodium Acid Pyrophosphate, Cellulose Gum, Natural and Artificial Flavor, Citric Acid, Color (yellows 5 & 6 and other color added), Freshness Preserved by Potassium Sorbate.

MAY CONTAIN MILK INGREDIENTS.

DIST. BY GENERAL MILLS SALES, INC., MINNEAPOLIS, MN 55440 USA

Contains Bioengineered Food Ingredients

Learn more at Ask.GeneralMills.com

© General Mills

GLUTEN FREE
Carbohydrate Choices: 1

STORE FROSTING IN COOL PLACE.

One 1/2 cup
One 1/4 cup
or One 1/2 cup
2-3g fat
or 24 to 32
• Contains
beta-carotene
• Store in
cool
• Cover
light
2 weeks
or more

THE BEST
The best
of general
mills
This is
just a
part
of
the
story
of
the
best
of
general
mills
The
best
of
general
mills
The
best
of
general
mills



8



8

Nutrition Facts

about 3.5 servings per container
Serving size 1/2 cup (130g)

Amount per serving
Calories 140

	% Daily Value*
Total Fat 2.5g	3%
Sat. Fat 1g	5%
Sodium 320mg	14%
Total Carb. 22g	8%
Fiber 5g	18%
Total Sugars 1g	
Protein 7g	

Vit. D 0mcg 0% • Calcium 40mg 4%
Iron 2mg 10% • Potas. 480mg 10%

Not a significant source of trans fat, cholest., added sugars.
*The % Daily Value tells you how much a nutrient in a serving of food contributes to a daily diet. 2,000 calories a day is used for general nutrition advice.

INGREDIENTS: COOKED PINTO BEANS, WATER, LARD AND HYDROGENATED LARD, SALT, VINEGAR, SPICES, GARLIC POWDER, ONION POWDER, CHILI PEPPER.
DISTRIBUTED BY THE KROGER CO.
CINCINNATI, OHIO 45202

Nutrition Facts

Serving Size: 1/2 cup (130g)
Servings Per Container: About 5

Amount Per Serving
Calories 170 Calories from Fat 5

	% Daily Value*
Total Fat 0.5g	1%
Saturated Fat 0g	0%
Trans Fat 0g	
Cholesterol 0mg	0%
Sodium 550mg	23%
Potassium 330mg	9%
Total Carbohydrate 35g	12%
Dietary Fiber 6g	24%
Sugars 16g	
Protein 6g	

Vitamin A 0% • Vitamin C 0%
Calcium 6% • Iron 4%

*Percent Daily Values are based on a 2,000 calorie diet. Your daily values may be higher or lower depending on your calorie needs:

	Calories: 2,000	2,500
Total Fat	Less than 65g	80g
Sat Fat	Less than 20g	25g
Cholesterol	Less than 300mg	300mg
Sodium	Less than 2,400mg	2,400mg
Potassium	Less than 3,500mg	3,500mg
Total Carbohydrate	300g	375g
Dietary Fiber	25g	30g

Calories per gram:
Fat 9 • Carbohydrate 4 • Protein 4

INGREDIENTS: PREPARED WHITE BEANS, WATER, SUGAR, TOMATO PUREE (TOMATO PASTE, WATER), BROWN SUGAR, ONION, BELL PEPPER, SALT, MODIFIED CORN STARCH, MOLASSES, VINEGAR, NATURAL FLAVOR, CARAMEL COLOR, CITRIC ACID, SPICES, MUSTARD SEED, NATURAL SMOKE FLAVOR.



Creamy RANCH DRESSING

Nutrition		Amount/serving	% DV	Amount/serving	% DV
Facts		Total Fat 14g	18%	Total Carb. 2g	1%
about 16 servings per container		Sat. Fat 2.5g	13%	Fiber 0g	0%
Serving size 2 Tbsp (30g)		Trans Fat 0g		Total Sugars 1g	
Calories 130 per serving		Cholesterol 10mg	3%	Incl. 1g Added Sugars	2%
		Sodium 240mg	10%	Protein 1g	
		Vitamin D 0%	• Calcium 2%	• Iron 0%	• Potassium 0%

INGREDIENTS: SOYBEAN OIL, WATER, LOWFAT BUTTERMILK (CULTURED LOWFAT AND SKIM MILK, SALT, TAPIOCA STARCH, LOCUST BEAN GUM, CARRAGEENAN), EGG YOLK, SUGAR, SOUR CREAM POWDER (CREAM, NONFAT MILK, CULTURES), SALT, VINEGAR, CONTAINS 1% OR LESS OF: SPICE, DRIED GARLIC, DRIED ONION, PARSLEY, PHOSPHORIC ACID, XANTHAN GUM, MODIFIED CORN STARCH, MONOSODIUM GLUTAMATE, NATURAL FLAVORS, SODIUM BENZOATE AND POTASSIUM SORBATE (PRESERVATIVES), CALCIUM DISODIUM EDTA (TO PROTECT FLAVOR).

87-1652

Nutrition Facts

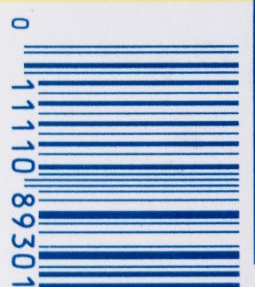
32 servings per container
Serving size 1 Tbsp (14g)

Amount per serving
Calories 100

	% Daily Value*
Total Fat 11g	14%
Saturated Fat 7g	35%
Trans Fat 0g	
Cholesterol 30mg	10%
Sodium 90mg	4%
Total Carbohydrate 0g	0%
Dietary Fiber 0g	0%
Total Sugars 0g	
Includes 0g Added Sugars	0%
Protein 0g	
Vitamin D 0mcg 0%	• Calcium 0mg 0%
Iron 0mg 0%	• Potassium 0mg 0%

*The % Daily Value tells you how much a nutrient in a serving of food contributes to a daily diet. 2,000 calories a day is used for general nutrition advice.

INGREDIENTS:
 PASTEURIZED CREAM
 (FROM MILK), SALT,
 CONTAINS: MILK.
 DISTRIBUTED BY
 THE KROGER CO.
 CINCINNATI, OHIO 45202
 A GLUTEN FREE FOOD







Nutrition Facts

about 3.5 servings per container
Serving size 1/2 cup (125g)

Amount per serving
Calories 60

	% Daily Value*
Total Fat 0g	0%
Saturated Fat 0g	0%
Trans Fat 0g	
Cholesterol 0mg	0%
Sodium 300mg	13%
Total Carbohydrate 11g	4%
Dietary Fiber 3g	11%
Total Sugars 5g	
Includes 2g Added Sugars	4%
Protein 3g	
Vitamin D 0mcg 0%	Calcium 17mg 2%
Iron 1mg 6%	Potassium 133mg 2%

*The % Daily Value (DV) tells you how much a nutrient in a serving of food contributes to a daily diet. 2,000 calories a day is used for general nutrition advice.

INGREDIENTS: PEA MEE, DISTILLATED WATER, MALTODEXTRIN, MANNAN OLIGOSACCHARIDE, UNCLE BEN'S TOSCANO LENTIL

Sweet Fix Strawberry Smoothie

16 grams total
1 per 1.58 oz. (45g) serving
1 container (125g) is 100% of the daily value of 125g.
1/2 cup (125g) is 100% of the daily value of 125g.
1/2 cup (125g) is 100% of the daily value of 125g.

Protein from a BHT (BHT) is a natural preservative that is used to keep your food safe. It is a naturally occurring compound that is found in many fruits and vegetables. It is a naturally occurring compound that is found in many fruits and vegetables. It is a naturally occurring compound that is found in many fruits and vegetables.

When combined with other ingredients, it can create a smooth texture. Visit our website for more information. ©2018 Sweet Fix Inc.



Nutrition Facts

about 3.5 servings per container
Serving size 1/2 cup (125g)

Amount per serving
Calories 45

	% Daily Value*
Total Fat 0.5g	1%
Saturated Fat 0g	0%
Trans Fat 0g	
Cholesterol 0mg	0%
Sodium 200mg	9%
Total Carbohydrate 9g	3%
Dietary Fiber 1g	4%
Total Sugars 2g	
Includes 0g Added Sugars	0%
Protein 1g	
Vit. D 0mcg 0%	Calcium 14mg 2%
Iron 0mg 0%	Potas. 125mg 2%

*The % Daily Value for this nutrient in a serving of food is based on a diet of other people's secrets. Daily diet: 2,000 calories, 25g fat, 300g carbs, 75g protein, 2,500mg sodium. ©2018 Wal-Mart Stores, Inc.

INGREDIENTS: CORN MEAL, SALT

DISTRIBUTED BY: Wal-Mart Stores, Inc., Bentonville, AR 72716

Best if used by date on label. After opening, store in a cool, dry place. See back of container and repackage.





3, 4, 7



3, 7

Nutrition Facts

about 4 servings per container
serving size 3 oz (85g / 1/3 cup)

Amount per serving
Calories 120

% Daily Value*

Total Fat 4g	5%
Saturated Fat 1g	5%
Trans Fat 0g	
Cholesterol 70mg	23%
Sodium 300mg	13%
Total Carbohydrate 0g	0%
Dietary Fiber 0g	0%
Total Sugars 0g	
Includes 0g Added Sugars	0%
Protein 20g	

Vitamin D 12mcg 60% • Calcium 240mg 20%
 Iron 1mg 6% • Potassium 280mg 6%

*The % Daily Value tells you how much a nutrient in a serving of food contributes to a daily diet. 2,000 calories a day is used for general nutrition advice.

INGREDIENTS: PINK SALMON, SALT
 CONTAINS SALMON
 DISTRIBUTED BY THE GROCER CO. CINCINNATI, OHIO 45202
 PRODUCT OF USA

Simply Orange®

100% ORANGE JUICE
 GOOD SOURCE OF VITAMIN C, VITAMIN D & CALCIUM

NO ADDED SUGAR†
 PASTEURIZED
 KEEP REFRIGERATED
 SHAKE WELL
 BEST IF USED WITHIN 7-10 DAYS AFTER OPENING.

PRODUCT QUESTIONS & FRESH TASTE GUARANTEED
 INFO CALL: 1-800-871-2653.
www.simplyorangejuice.com

†NOT A REDUCED CALORIE FOOD. SEE NUTRITION FACTS FOR SUGAR & CALORIE CONTENT.

HI, ME 5¢
 PLEASE RECYCLE



SCAN HERE FOR MORE FOOD INFORMATION

USD48146 • USD48147



Nutrition Facts
 About 7 servings per container
Serving Size 8 fl oz (240 mL)

Amount Per Serving
Calories 110

Total Fat 0g	% Daily Value	0%
Sodium 0mg		0%
Total Carbohydrate 26g		9%
Total Sugars 23g		
Includes 0g Added Sugars		0%
Protein 2g	Not a significant source of protein	

Vitamin D 2.5mcg 15%	• Calcium 550mg 26%
Potassium 450mg 10%	• Vitamin C 30%
Vitamin B6 8%	• Niacin 2%
Vitamin B5 4%	• Folate 10%
Magnesium 6%	

Not a significant source of saturated fat, trans fat, cholesterol, dietary fiber and iron.

CONTAINS ORANGE JUICE LESS THAN 1% OF CALCIUM PHOSPHATE AND CALCIUM LACTATE (CALCIUM SOURCES), VITAMIN D2. *INGREDIENTS NOT FOUND IN REGULAR ORANGE JUICE.

PRODUCED FOR SIMPLY ORANGE JUICE COMPANY
 APPMA, TX, 27703 U.S.A.
 CONTAINS ORANGE JUICE FROM COUNTRIES IDENTIFIED ON BOTTLE NECK.
 ©2015 SIMPLY ORANGE JUICE COMPANY.

2019-00750

44968



3, 4, 7



3, 7

Nutrition Facts

about 4 servings per container
serving size 3 oz (85g / 1/3 cup)

Amount per serving
Calories 120

% Daily Value*

Total Fat 4g	5%
Saturated Fat 1g	5%
Trans Fat 0g	
Cholesterol 70mg	23%
Sodium 300mg	13%
Total Carbohydrate 0g	0%
Dietary Fiber 0g	0%
Total Sugars 0g	
Includes 0g Added Sugars	0%
Protein 20g	

Vitamin D 12mcg 60% • Calcium 240mg 20%
 Iron 1mg 6% • Potassium 280mg 6%

*The % Daily Value tells you how much a nutrient in a serving of food contributes to a daily diet. 2,000 calories a day is used for general nutrition advice.

INGREDIENTS: PINK SALMON, SALT, CONTAINS SALMON.
 DISTRIBUTED BY THE GROCER CO. CINCINNATI, OHIO 45202
 PRODUCT OF USA

Simply Orange®

100% ORANGE JUICE
 GOOD SOURCE OF VITAMIN C, VITAMIN D & CALCIUM

NO ADDED SUGAR†
 PASTEURIZED
 KEEP REFRIGERATED
 SHAKE WELL
 BEST IF USED WITHIN 7-10 DAYS AFTER OPENING.

PRODUCT QUESTIONS & FRESH TASTE GUARANTEED
 INFO CALL: 1-800-871-2653.
www.simplyorangejuice.com

†NOT A REDUCED CALORIE FOOD. SEE NUTRITION FACTS FOR SUGAR & CALORIE CONTENT.

HI, ME 5¢
 PLEASE RECYCLE



SCAN HERE FOR MORE FOOD INFORMATION

USD48146 • USD48147



Nutrition Facts
 About 7 servings per container
Serving Size 8 fl oz (240 mL)

Amount Per Serving
Calories 110

Total Fat 0g	% Daily Value 0%
Sodium 0mg	0%
Total Carbohydrate 26g	9%
Total Sugars 23g	
Includes 0g Added Sugars	0%
Protein 2g	Not a significant source of protein

Vitamin D 2.5mcg 15%	• Calcium 550mg 26%
Potassium 450mg 10%	• Vitamin C 30%
Vitamin B6 8%	• Niacin 2%
Vitamin B5 4%	• Folate 10%
Magnesium 6%	

Not a significant source of saturated fat, trans fat, cholesterol, dietary fiber and iron.

CONTAINS ORANGE JUICE LESS THAN 1% OF CALCIUM PHOSPHATE AND CALCIUM LACTATE (CALCIUM SOURCES), VITAMIN D2. *INGREDIENTS NOT FOUND IN REGULAR ORANGE JUICE.

PRODUCED FOR SIMPLY ORANGE JUICE COMPANY APOPA, GA 30706 U.S.A.
 CONTAINS ORANGE JUICE FROM COUNTRIES IDENTIFIED ON BOTTLE NECK.
 ©2015 SIMPLY ORANGE JUICE COMPANY.

44968

2019-00750



Nutrition Facts

About 13 servings per container (age 4+ years)
 About 25 servings per container (age 1-3 years)
Serving size 1½ cup (39g) (age 4+ years)
% cup (20g) (age 1-3 years)

	Children with 1½ cup skim milk	Age 1-3 years
Calories	140	190
	% DV***	% DV***
Total Fat 2.5g*	3%	4%
Saturated Fat 0.5g	3%	0%
Trans Fat 0g		
Monounsaturated Fat 1g		
Cholesterol 0mg	0%	0%
Sodium 19mg	8%	7%
Total Carbohydrate 29g	14%	10%
Dietary Fiber 4g	14%	14%
Soluble Fiber 1g		
Total Sugars 2g	4%	3%
Incl. Added Sugars 2g	4%	8%
Protein 5g	10%	8%
Vitamin D 2mg	10%	15%
Calcium 130mg	10%	20%
Iron 12.6mg	70%	70%
Potassium 250mg	6%	8%
Vitamin A	10%	20%
Vitamin C	10%	10%
Thiamin	20%	25%
Niacin	10%	10%
Vitamin B ₁	20%	30%
Folate (45mg folic acid)	20%	25%
Vitamin B ₆	20%	30%
Phosphorus	10%	20%
Magnesium	15%	35%
Zinc	20%	35%

*Amount in cereal, a serving of cereal plus skim milk provides 3g Total Fat, 1g Saturated Fat, less than 5mg Cholesterol, 25mg Sodium, 35g Total Carbohydrate, 6g Total Sugars, 0g Protein, 5mg Vitamin D, 26mg Calcium, 12.6mg Iron, and 250mg Potassium.

**Amount in cereal, a serving of cereal plus a serving of skim milk provides 1.3 grams of total fat, 0.3 grams of saturated fat, less than 5mg cholesterol, 15mg sodium, 15mg total carbohydrates, 10g dietary fiber, <1g soluble fiber, 1g total sugars, 1g added sugars, 2g protein, 6mg vitamin D, 6mg calcium, 8mg iron, and 15mg potassium.

***The % Daily Value (DV) tells you how much a nutrient in a serving of food contributes to a daily diet. 2,000 calories a day is used for general nutrition advice.

****The % Daily Value (DV) tells you how much a nutrient in a serving of food contributes to a daily diet. 1,000 calories a day is used for general nutrition advice for children 1-3 years.

Ingredients: Whole Grain Oats, Corn Starch, Sugar, Salt, Tripotassium Phosphate, Vitamin E (mixed tocopherols) Added to Preserve Freshness.

Vitamins and Minerals: Calcium Carbonate, Iron and Zinc (mineral nutrients), Vitamin C (sodium ascorbate), A, B Vitamin (niacinamide), Vitamin B₆ (pyridoxine hydrochloride), Vitamin A (palmitate), Vitamin B₁ (thiamin mononitrate), A, B Vitamin (folic acid), Vitamin B₁₂, Vitamin D₂.



Nutrition Facts

About 20 servings per container
Serving size 1 cup (37g)

	Cereal Alone	With 2/3 cup Vitamin A & D fortified skim milk
Calories	150	200
	% DV*	% DV*
Total Fat	2g	2g
Saturated Fat	0.5g	1g
Trans Fat	0g	0g
Polysat. Fat	0g	0g
Monounsat. Fat	0.5g	0.5g
Cholesterol	0mg	<5mg
Sodium	270mg	12%
Total Carb	32g	12%
Dietary Fiber	<1g	3%
Total Sugars	16g	32%
Incl. Added Sugars	16g	32%
Protein	2g	7g
Vitamin D	0mg	0%
Calcium	0mg	0%
Iron	7.5mg	40%
Potassium	60mg	0%
Thiamin	0.3mg	25%
Riboflavin	0.3mg	25%
Niacin	4.8mg	30%
Vitamin B ₆	0.4mg	25%
Folate DFE	200mcg	50%
Folic Acid	133mcg	133mcg

*The % Daily Value (DV) tells you how much a nutrient in a serving of food contributes to a daily diet. 2,000 calories a day is used for general nutrition advice.

INGREDIENTS: Corn flour, sugar, oat flour, brown sugar, palm and/or coconut oil, salt, sodium citrate, natural and artificial flavor, malic acid, red 40, reduced iron, yellow 5, niacinamide, blue 1, yellow 6, BHT (to preserve freshness), thiamine mononitrate, pyridoxine hydrochloride, riboflavin, folic acid.

* One of the B vitamins



8



8

Nutrition Facts

Serving size 1 can (396mL)

Amount per serving
Calories 15

% Daily Value*

Total Fat 0g 0%

Saturated Fat 0g 0%

Trans Fat 0g

Cholesterol 0mg 0%

Sodium 1380mg 60%

Total Carbohydrate 1g 0%

Dietary Fiber 0g 0%

Total Sugars 1g

Includes 1g Added Sugars 2%

Protein 2g

Vitamin D 0mcg 0% • Calcium 10mg 0%

Iron 0mg 0% • Potassium 33mg 0%

*The % Daily Value (DV) tells you how much a nutrient in a serving of food contributes to a daily diet. 2,000 calories a day is used for general nutrition advice.

INGREDIENTS: CHICKEN STOCK, CONTAINS 2% OR LESS OF: SEA SALT, SALT, SUGAR, NATURAL FLAVORING, DEHYDRATED ONION, YEAST EXTRACT, CHICKEN FAT, CARROT JUICE CONCENTRATE, CELERY, ONION.

DISTRIBUTED BY THE KROGER CO., CINCINNATI, OHIO 45202

Nutrition Facts / Datos de Nutrición

16 servings per container / raciones por envase

Serving size 1/2 cube (6g) (makes 1 cup prepared)

Tamaño por ración 1/2 cubo (6g) (sirve para preparar 1 taza)

Amount per serving / Cantidad por ración

Calories / Calorías 15

% Daily Value / % Valor Diario

Total Fat / Grasa Total 1.5g 2%

Saturated Fat / Grasa Sat. 1g 5%

Sodium / Sodio 1030mg 45%

Total Carbohydrate / Carbohidrato Total <1g 1%

Protein / Proteínas 0g

Not a significant source of trans fat, cholest., fiber, total sugars, added sugars, vit. D, calcium, iron, and potas. / No es una fuente importante de grasa trans, colest., fibre, azúcares totales, azúcares añadidos, vit. D, calcio, hierro y potas.

INGREDIENTS: SALT, MONOSODIUM GLUTAMATE, PALM OIL, CORN STARCH, HYDROGENATED PALM OIL, SUGAR, XANTHAN GUM, CHICKEN FAT, NATURAL FLAVOR, WATER, TURMERIC (COLOR), DISODIUM GUANYLATE, DISODIUM INOSINATE, MALTODEXTRIN, DEHYDRATED PARSLEY, SPICES, CARAMEL COLOR, TBHQ (USED TO PROTECT QUALITY).

INGREDIENTES: SAL, GLUTAMATO MONOSÓDICO, ACEITE DE PALMA, ALMIDÓN DE MAÍZ, ACEITE HIDROGENADO DE PALMA, AZÚCAR, GOMA XANTANA, GRASA DE POLLO, SABORIZANTE NATURAL, AGUA, CÚRCUMA (COLOR), GUANILATO DISÓDICO, INOSINATO DISÓDICO, MALTODEXTRINA, PEREJIL DESHIDRATADO, ESPECIAS, COLOR CARAMELO, TBHQ (USADO PARA PROTEGER LA CALIDAD).

©UNILEVER
ENGLEWOOD CLIFFS, NJ 07632 USA
PRODUCT OF MEXICO / PRODUCTO DE MEXICO

PRODUCED WITH GENETIC ENGINEERING
Questions? Visit learnaboutmyfood.com

¡Para Sugerencias o Comentarios! Llame sin costo al 1-866-KNORR-01
Questions or comments? Please call Toll Free 1-866-KNORR-01



Unilever



7, 8



3, 7, 8

Nutrition Facts

About 8 servings per container
Serving size 1 oz (28g)

Calories 110
 per serving

Amount/serving	% Daily Value*
Total Fat 9g	12%
Saturated Fat 5g	25%
Trans Fat 0g	
Cholesterol 30mg	10%
Sodium 180mg	8%
Vitamin D 0.2mcg 2% • Calcium 200mg 15% • Iron 0mg 0% • Potassium 20mg 0%	

Amount/serving	% Daily Value*
Total Carbohydrate <1g	0%
Dietary Fiber 0g	0%
Total Sugars 0g	
Includes 0g Added Sugars	0%
Protein 6g	

*The % Daily Value (DV) tells you how much a nutrient in a serving of food contributes to a daily diet. 2,000 calories a day is used for general nutrition advice.

INGREDIENTS: CULTURED PASTEURIZED MILK, SALT, ENZYMES, ANNATTO (COLOR).



INGREDIENTS: MILK, LIQUID SUGAR (SUGAR, WATER), LESS THAN 1% OF COCOA (PROCESSED WITH ALKALI), CORN STARCH, SALT, CARRAGEENAN, NATURAL FLAVOR, NONFAT MILK, VITAMIN D₃.
 DISTRIBUTED BY: DFA DAIRY BRANDS, LLC, KANSAS CITY, KS 66111

trumoo.com

COMMENTS? 1-800-395-7004

GRADE A • PASTEURIZED • HOMOGENIZED
 PLANT # STAMPED ABOVE

KEEP REFRIGERATED

SHAKE WELL

*No significant difference has been shown in milk from cows treated with the artificial growth hormone rbST and non rbST treated cows.



Nutrition Facts

4 servings per container
Serving size 1 cup (240mL)

Amount per serving
Calories 210
 % Daily Value*

Total Fat 8g	11%
Saturated Fat 5g	26%
Trans Fat 0g	
Cholesterol 35mg	11%
Sodium 230mg	10%
Total Carbohydrate 25g	9%
Dietary Fiber 0g	0%
Total Sugars 23g	
Includes 11g Added Sugars	23%
Protein 8g	16%

Vit D 2.5mcg 10% • Calcium 300mg 25%
 Iron 0.5mg 2% • Potas 440mg 10% • Vit A 10%

The % Daily Value (DV) tells you how much a nutrient in a serving of food contributes to a daily diet. 2,000 calories a day is used for general nutrition advice.



7, 8



3, 7, 8

Nutrition Facts

About 8 servings per container
Serving size 1 oz (28g)

Calories per serving 110

Amount/serving	% Daily Value*
Total Fat 9g	12%
Saturated Fat 5g	25%
Trans Fat 0g	
Cholesterol 30mg	10%
Sodium 180mg	8%

Amount/serving	% Daily Value*
Total Carbohydrate <1g	0%
Dietary Fiber 0g	0%
Total Sugars 0g	
Includes 0g Added Sugars	0%
Protein 6g	

Vitamin D 0.2mcg 2% • Calcium 200mg 15% • Iron 0mg 0% • Potassium 20mg 0%

*The % Daily Value (DV) tells you how much a nutrient in a serving of food contributes to a daily diet. 2,000 calories a day is used for general nutrition advice.

INGREDIENTS: CULTURED PASTEURIZED MILK, SALT, ENZYMES, ANNATTO (COLOR).



INGREDIENTS: MILK, LIQUID SUGAR (SUGAR, WATER), LESS THAN 1% OF COCOA (PROCESSED WITH ALKALI), CORN STARCH, SALT, CARRAGEENAN, NATURAL FLAVOR, NONFAT MILK, VITAMIN D₃.
 DISTRIBUTED BY: DFA DAIRY BRANDS, LLC, KANSAS CITY, KS 66111

trumoo.com
 COMMENTS? 1-800-395-7004
 GRADE A • PASTEURIZED • HOMOGENIZED
 PLANT # STAMPED ABOVE
 KEEP REFRIGERATED
 SHAKE WELL

*No significant difference has been shown in milk from cows treated with the artificial growth hormone rbST and non rbST treated cows.



Nutrition Facts
 4 servings per container
Serving size 1 cup (240mL)

Amount per serving	% Daily Value*
Calories 210	
Total Fat 8g	11%
Saturated Fat 5g	26%
Trans Fat 0g	
Cholesterol 35mg	11%
Sodium 230mg	10%
Total Carbohydrate 25g	9%
Dietary Fiber 0g	0%
Total Sugars 23g	
Includes 11g Added Sugars	23%
Protein 8g	16%

Vit D 2.5mcg 10% • Calcium 300mg 25%
 Iron 0.5mg 2% • Potas 440mg 10% • Vit A 10%

The % Daily Value (DV) tells you how much a nutrient in a serving of food contributes to a daily diet. 2,000 calories a day is used for general nutrition advice.



8



8



Nutrition Facts

About 38 servings per container
Serving size 1 Tbsp (12g)

Amount per serving
Calories 110

	% Daily Value*
Total Fat 12g	15%
Saturated Fat 3.5g	16%
Trans Fat 0g	
Polyunsaturated Fat 6g	
Monounsaturated Fat 2.5g	
Cholesterol 0mg	0%
Sodium 0mg	0%
Total Carbohydrate 0g	0%
Protein 0g	

Not a significant source of dietary fiber, total sugars, added sugars, vitamin D, calcium, iron and potassium.

* The % Daily Value tells you how much a nutrient in a serving of food contributes to a daily diet. 2,000 calories a day is used for general nutrition advice.

INGREDIENTS: SOYBEAN OIL, FULLY HYDROGENATED PALM OIL, PALM OIL, MONO AND DIGLYCERIDES, TBHQ AND CITRIC ACID (ANTIOXIDANTS).

©/TM/® THE J.M. SMUCKER COMPANY
ORRVILLE, OH 44667 USA

WARNING: Shortening will catch fire if overheated. Damage or serious burns may result.

- DO** heat shortening carefully, uncovered, on medium heat.
- DO** reduce heat if smoking occurs.
- DO NOT** leave unattended while heating.
- DO NOT** refill can with hot shortening.
- IF SHORTENING CATCHES FIRE:**
- DO** turn off heat.
- DO** cover pot until cooled to room temperature to avoid reignition.
- DO NOT** carry pot until cool.
- DO NOT** put water on hot or flaming shortening.

Classic

2 cups all-purpose flour
1 teaspoon salt
3/4 cup well-chilled Crisco All Purpose Shortening
4 to 8 tablespoons ice cold water

BLEND flour and salt in large bowl until crumbly. Stir in enough water until dough crumps form.

DIVIDE dough in half. Shape into two balls.

ROLL out each disk a 1/2-inch thick. Roll out crust according to recipe directions.

Makes 2 (9-inch) single crust or 1 (9-inch) double crust.

How To Substitute Crisco Shortening For Butter Or Margarine

1 cup Crisco Shortening = 1 cup Butter or Margarine

Not intended for use as a spread.

GLUTEN FREE



Nutrition Facts

about 28 servings per container
Serving size 1 Tbsp (14g)

Amount per serving
Calories 120

	% Daily Value*
Total Fat 14g	18%
Saturated Fat 13g	64%
Polyunsaturated Fat 0g	
Monounsaturated Fat 1g	
Sodium 0mg	0%
Total Carbohydrate 0g	0%
Protein 0g	

Not a significant source of trans fat, cholesterol, dietary fiber, total sugars, added sugars, vitamin D, calcium, iron or potassium.

* The % Daily Value tells you how much a nutrient in a serving of food contributes to a daily diet. 2,000 calories a day is used for general nutrition advice.

INGREDIENTS: ORGANIC COCONUT OIL.

CONTAINS: COCONUT. DISTRIBUTED BY THE KROGER CO. CINCINNATI, OHIO 45202. CERTIFIED ORGANIC BY MICA. PRODUCT OF PHILIPPINES. FAIR TRADE CERTIFIED BY FAIR TRADE USA.

STORE IN A COOL DRY PLACE AWAY FROM EXTREME HEAT. REMOVE COCONUT OIL HAS A SMOKE POINT OF APPROXIMATELY 450°F. IS BEST FOR SAUTÉING OR HIGH-HEAT FRYING OVER MEDIUM-HEAT OR FOR BAKING.

.....
SIMPLE TRUTH ORGANIC PRODUCTS ARE FORMULATED WITHOUT GENETICALLY MODIFIED ORGANISMS (GMO). THE MODIFIED ORGANISMS (GMO) IS USDA'S NATIONAL ORGANIC PROGRAM DOES NOT PERMIT THE USE OF GENETICALLY MODIFIED ORGANISMS IN CERTIFIED ORGANIC PRODUCTS.

QUALITY GUARANTEE
800-652-6900
www.simpletruth.com



7



7

Nutrition Facts

8 servings per container
Serving size
 1 oz (28g/about 2 Tbsp.)

Calories **90**
 per serving

Amount/serving	% Daily Value*	Amount/serving	% Daily Value*
Total Fat 9g	12%	Total Carbohydrate 2g	1%
Saturated Fat 6g	30%	Dietary Fiber 0g	0%
Trans Fat 0g		Total Sugars 1g	
Cholesterol 30mg	10%	Includes 0g Added Sugars	0%
Sodium 95mg	4%	Protein 2g	
Vitamin D 0mcg 0% • Calcium 27mg 2% • Iron 0mg 0% • Potassium 0mg 0%			

*The % Daily Value tells you how much a nutrient in a serving of food contributes to a daily diet. 2,000 calories a day is used for general nutrition advice.

INGREDIENTS: PASTEURIZED MILK AND CREAM, CHEESE CULTURE, SALT, GUAR GUM, CAROB BEAN GUM, XANTHAN GUM. CONTAINS MILK.

01/22 F 49-70 07:44 27

Nutrition Facts

about 15 servings per container
Serving size
 2 Tbsp (30g)

Calories **60**
 per serving

Amount/serving	% DV*	Amount/serving	% DV*
Total Fat 6g	7%	Total Carbohydrate 1g	0%
Saturated Fat 3.5g	18%	Dietary Fiber 0g	0%
Trans Fat 0g		Total Sugars 1g	
Cholesterol 20mg	7%	Includes 0g Added Sugars	0%
Sodium 15mg	1%	Protein less than 1g	0%
Vitamin D 0mcg 0% • Calcium 30mg 2% • Iron 0mg 0% • Potassium 0mg 0%			

INGREDIENTS: CULTURED CREAM AND SKIM MILK, ENZYMES.
 CONTAINS: MILK.
 DISTRIBUTED BY THE KROGER CO.
 CINCINNATI, OHIO 45202
 PROCESSED AT LOCATION SHOWN ON CONTAINER.

QUALITY GUARANTEED
 800-632-6900 • www.kroger.com



Nutrition Facts

About 3 servings per container
Serving size About 12 chips (28g)

	Per serving	Per package
	% DV*	% DV*
Calories	150	410
Total Fat	8g 10%	21g 27%
Saturated Fat	1g 5%	3g 15%
Trans Fat	0g	0g
Cholesterol	0mg 0%	0mg 0%
Sodium	190mg 8%	510mg 22%
Total Carb.	18g 6%	49g 18%
Dietary Fiber	1g 4%	3g 12%
Total Sugars	less than 1g	2g
Protein	2g	5g
Vitamin D	0mcg 0%	0mcg 0%
Calcium	30mg 2%	90mg 6%
Iron	0.3mg 0%	0.7mg 4%
Potassium	50mg 0%	150mg 2%

Not a significant source of added sugars.

* The % Daily Value (DV) tells you how much a nutrient in a serving of food contributes to a daily diet. 2,000 calories a day is used for general nutrition advice.

INGREDIENTS: CORN, VEGETABLE OIL (SUNFLOWER, CANNOLA, AND/OR CORN OIL), MALTODEXTRIN (MADE FROM CORN), SALT, WHEY, CHEDDAR CHEESE (MILK, CHEESE CULTURES, SALT, ENZYMES), BUTTERMILK, MONOSODIUM GLUTAMATE, ROMANO CHEESE (COW'S MILK, CHEESE CULTURES, SALT, ENZYMES), ONION POWDER, CORN FLOUR, NATURAL AND ARTIFICIAL FLAVORS, DEXTROSE, TOMATO POWDER, WHEY PROTEIN CONCENTRATE, SPICES, LACTOSE, ARTIFICIAL COLOR (YELLOW 6, YELLOW 5, RED 40), POTASSIUM CHLORIDE, LACTIC ACID, SODIUM CASEINATE, CITRIC ACID, SUGAR, GARLIC POWDER, RED AND GREEN BELL PEPPER POWDER, SKIM MILK, DISODIUM INOSINATE, AND DISODIUM GUANYLATE.
CONTAINS MILK INGREDIENTS.

Nutrition Facts

About 12 servings per container
Serving size 3 cookies (34g)

Amount per serving	% Daily Value*
Calories	160
Total Fat 7g	9%
Saturated Fat 2g	10%
Trans Fat 0g	
Cholesterol 0mg	0%
Sodium 135mg	6%
Total Carbohydrate 25g	9%
Dietary Fiber less than 1g	2%
Total Sugars 14g	
Includes 14g Added Sugars	28%
Protein 1g	
Vitamin D 0mcg	0%
Calcium 10mg	0%
Iron 1.4mg	8%
Potassium 50mg	0%

* The % Daily Value (DV) tells you how much a nutrient in a serving of food contributes to a daily diet. 2,000 calories a day is used for general nutrition advice.

INGREDIENTS: UNBLEACHED ENRICHED FLOUR (WHEAT FLOUR, NIACIN, REDUCED IRON, THIAMINE MONONITRATE (VITAMIN B1), RIBOFLAVIN (VITAMIN B2), FOLIC ACID), SUGAR, PALM AND/OR CANNOLA OIL, COCOA (PROCESSED WITH ALKALI), HIGH FRUCTOSE CORN SYRUP, LEAVENING (BAKING SODA AND/OR CALCIUM PHOSPHATE), SALT, SOY LECITHIN, CHOCOLATE, ARTIFICIAL FLAVOR.
CONTAINS: WHEAT, SOY.
MONDELEZ GLOBAL LLC
EAST HANOVER, NJ 07936 USA
MADE IN MEXICO



8



8

Zesty
ITALIAN
DRESSING

	Amount/serving	% DV	Amount/serving	% DV
Calories per serving	80	Vitamin D 0%	Calcium 0%	Iron 0% • Potassium 0%
Serving size 2 Tbsp (30g)	Cholesterol 0mg	0%	Sodium 330mg	14% Protein 0g
about 16 servings per container	Sat. Fat 1g	5%	Total Sugars 3g	
	Trans Fat 0g		Incl. 3g Added Sugars 6%	
	Total Fat 7g	9%	Total Carb. 4g	1%
			Fiber 0g	0%

Nutrition Facts

INGREDIENTS: WATER, SOYBEAN OIL, HIGH FRUCTOSE CORN SYRUP, DISTILLED VINEGAR, SALT, CONTAINS 2% OR LESS OF: DRIED GARLIC, DRIED ONION, DRIED RED BELL PEPPERS, AUTOLYZED YEAST EXTRACT, XANTHAN GUM, SPICE, LEMON JUICE CONCENTRATE, ANNATTO AND CARAMEL (FOR COLOR), CALCIUM DISSODIUM EDTA (TO PRESERVE FRESHNESS).

California
FRENCH
STYLE DRESSING

	Amount/serving	% DV	Amount/serving	% DV
Calories per serving	80	Vitamin D 0%	Calcium 0%	Iron 0% • Potassium 0%
Serving size 2 Tbsp (30g)	Cholesterol 0mg	0%	Sodium 340mg	15% Protein 0g
about 16 servings per container	Sat. Fat 1g	5%	Total Sugars 7g	
	Trans Fat 0g		Incl. 7g Added Sugars 14%	
	Total Fat 5g	6%	Total Carb. 8g	3%
			Fiber 0g	0%

Nutrition Facts

INGREDIENTS: TOMATO PUREE (WATER, TOMATO PASTE CONCENTRATE), HIGH FRUCTOSE CORN SYRUP, SOYBEAN OIL, CORN-CIDER VINEGAR, SUGAR, SALT, CONTAINS 2% OR LESS OF: WATER, MODIFIED CORN STARCH, DRIED ONION, XANTHAN GUM, POTASSIUM SORBATE AND SODIUM BENZOATE (PRESERVATIVES), CALCIUM DISSODIUM EDTA (TO PROTECT FLAVOR), NATURAL FLAVOR, CARAMEL COLOR, RED 40.

DISTRIBUTED BY THE KROGER CO., CINCINNATI, OHIO 45202



5



5

Nutrition Facts

About 6 Servings Per Container
Serving Size 55 Pieces (30g)

Amount per serving

Calories 140

% Daily Value*

Total Fat 5g 6%

Saturated Fat 1g 5%

Trans Fat 0g

Polyunsaturated Fat 1g

Monounsaturated Fat 3g

Cholesterol <5mg 2%

Sodium 240mg 10%

Total Carbohydrate 19g 7%

Dietary Fiber 2g 7%

Total Sugars 0g

Includes 0g Added Sugars 0%

Protein 3g

Vitamin D 0mcg 0% • Calcium 30mg 2%

Iron 1mg 6% • Potassium 70mg 0%

Thiamin 0.14mg 10% • Riboflavin 0.15mg 10%

Niacin 1.8mg 10% • Folate 40mcg DFE 10%
(30mcg folic acid)

* The % Daily Value (DV) tells you how much a nutrient in a serving of food contributes to a daily diet. 2,000 calories a day is used for general nutrition advice.

MADE WITH SMILES AND WHOLE WHEAT FLOUR, ENRICHED WHEAT FLOUR (FLOUR, NIACIN, REDUCED IRON, THIAMINE MONONITRATE, RIBOFLAVIN, FOLIC ACID), CHEDDAR CHEESE (CULTURED MILK, SALT, ENZYMES), ANNATTO), VEGETABLE OILS (CANOLA, SUNFLOWER AND/OR SOYBEAN), SALT, CONTAINS 2% OR LESS OF: YEAST, AUTOLYZED YEAST EXTRACT, PAPRIKA, SPICES, CELERY, BAKING SODA, MONOCALCIUM PHOSPHATE, ONION POWDER.

CONTAINS: WHEAT, MILK.

PEPPERIDGE FARM, INC., NORWALK, CT 06856
Contains bioengineered food ingredients.

The ingredients from canola and soy in this product come from genetically modified crops.

Learn more at pepperidgefarm.com

910001029449

BAKED IN U.S.A. 8578-11-10S0E3

Nutrition Facts

about 13 servings per container

Serving size 8 crackers (31g)
(1 serving = 2 full cracker sheets)

Amount per serving

Calories 130

% Daily Value*

Total Fat 3g 4%

Saturated Fat 0g 0%

Trans Fat 0g

Cholesterol 0mg 0%

Sodium 160mg 7%

Total Carbohydrate 24g 9%

Dietary Fiber 1g 4%

Total Sugars 8g

Includes 8g Added Sugars 16%

Protein 2g

Vitamin D 0mcg 0%

Calcium 10mg 0%

Iron 0.9mg 6%

Potassium 50mg 0%

* The % Daily Value (DV) tells you how much a nutrient in a serving of food contributes to a daily diet. 2,000 calories a day is used for general nutrition advice.

INGREDIENTS: UNBLEACHED ENRICHED FLOUR (WHEAT FLOUR, NIACIN, REDUCED IRON, THIAMINE MONONITRATE {VITAMIN B1}, RIBOFLAVIN {VITAMIN B2}, FOLIC ACID), GRAHAM FLOUR (WHOLE GRAIN WHEAT FLOUR), SUGAR, CANOLA OIL, HONEY, LEAVENING (BAKING SODA, CALCIUM PHOSPHATE), SALT, SOY LECITHIN, ARTIFICIAL FLAVOR.

CONTAINS: WHEAT, SOY.

MONDELEZ GLOBAL LLC, EAST HANOVER, NJ 07936 USA

MADE IN MEXICO



8



8

*16g of whole grain per serving. At least 48g of whole grain recommended daily.

Nutrition Facts

6 servings per container
Serving size 2 bars (42g)

	2 bars	1 bar	% DV*
Calories	190	100	
Total Fat	7g	3.5g	5%
Saturated Fat	1g	0g	0%
Trans Fat	0g	0g	
Cholesterol	0mg	0mg	0%
Sodium	140mg	70mg	3%
Total Carb.	29g	15g	5%
Dietary Fiber	2g	1g	4%
Total Sugars	11g	6g	
Incl. Added Sugars	11g	6g	11%
Protein	3g	2g	
Iron	1mg	0.5mg	2%

Not a significant source of vitamin D, calcium and potassium.

*The % Daily Value (DV) tells you how much a nutrient in a serving of food contributes to a daily diet. 2,000 calories a day is used for general nutrition advice.

Ingredients: Whole Grain Oats, Sugar, Canola Oil, Rice Flour, Honey, Salt, Brown Sugar Syrup, Baking Soda, Soy Lecithin, Natural Flavor.

CONTAINS SOY; MAY CONTAIN PEANUT, ALMOND AND PECAN INGREDIENTS.

DISTRIBUTED BY GENERAL MILLS SALES, INC., MINNEAPOLIS, MN 55440 USA

Contains Bioengineered Food Ingredients

Learn more at Ask.GeneralMills.com

GOOD SOURCE OF 3 B VITAMINS

Nutrition Facts/ Datos de Nutrición

4 servings per container/4 raciones por envase
Serving size/Tamaño por ración 2 Pastries/2 Pasteillos (96g)

Amount per serving/Cantidad por ración **Calories/Calorías 370**

	Amount	% DV* % VD*
Total Fat/Grasa Total	9g	12%
Saturated Fat/Grasa Saturada	3g	15%
Trans Fat/Grasa Trans	0g	
Polyunsaturated Fat/Grasa Poliinsaturada	3.5g	
Monounsaturated Fat/Grasa Monoinsaturada	2g	0%
Cholesterol/Colesterol	0mg	0%
Sodium/Sodio	320mg	14%
Total Carbohydrate/Carbhidrato Total	70g	25%
Dietary Fiber/Fibra Dietética	1g	4%
Total Sugars/Azúcares Totales	30g	
Incl. 30g Added Sugars / Incl. 30g azúcares añadidos		60%
Protein/Proteínas	3g	
Vit. D/Vit. D	0mcg	0%
Calcium/Calcio	10mg	0%
Iron/Hierro	1.5mg	8%
Potassium/Potasio	50mg	0%
Thiamin/Tiamina	4%	
Riboflavin/Riboflavina	10%	
Niacin/Niacina	10%	
Folate/Folato	40mcg DFE	10%
(25mcg folic acid/ácido fólico)		

*The % Daily Value (DV) tells you how much a nutrient in a serving of food contributes to a daily diet. 2,000 calories a day is used for general nutrition advice. / El % Valor Diario (VD) le indica cuánto un nutriente en una porción de alimentos contribuye a una dieta diaria. 2,000 calorías al día se utiliza para el asesoramiento de nutrición general.

Ingredients: Enriched flour (wheat flour, niacin, reduced iron, vitamin B₁ [thiamin mononitrate], vitamin B₂ [riboflavin], folic acid), corn syrup, high fructose corn syrup, dextrose, soybean and palm oil (with TBHQ for freshness), sugar, bleached wheat flour.
 Contains 2% or less of wheat starch, salt, dried strawberries, dried pears, dried apples, leavening (baking soda, sodium acid pyrophosphate, monocalcium phosphate), citric acid, gelatin, modified wheat starch, yellow corn flour, caramel color, xanthan gum, comstarch, turmeric extract color, soy lecithin, red 40, yellow 6, blue 1, color added.

CONTAINS WHEAT AND SOY INGREDIENTS.

Ingredientes: Harina enriquecida (harina de trigo, niacina, hierro reducido, vitamina B₁ [mononitrato de tiamina], vitamina B₂ [riboflavina], ácido fólico), jarabe de maíz, dextrosa, aceites de soya y de palma (con TBHQ para mantener la frescura), azúcar, harina de trigo blanqueada.

Contiene 2% o menos de almidón de trigo, sal, fresas secas, peras secas, manzanas secas, agentes leudantes (bicarbonato de sodio, monóxido de sodio, fosfato monocalcico), ácido cítrico, gelatina, almidón de trigo modificado, harina de maíz amarillo, color caramelo, goma xantana, maicena, extracto de cúrcuma para color, lecitina de soya, rojo 40, amarillo 6, azul 1, adición de color.

CONTIENE INGREDIENTES DE TRIGO Y SOYA.

Distributed by Kellogg Sales Co.
 Distribuido por Kellogg Sales Co.
 Battle Creek, MI 49016

©, TM, © 2021 Kellogg NA Co.

Contains a bioengineered food ingredient
 Contiene un ingrediente producido con bioingeniería



8



8



PACKAGED FOR MAXIMUM FRESHNESS & QUALITY!

Nutrition Facts

Serving Size 4 oz (112g)
Servings Per Container 4

Amount Per Serving

Calories 170 Calories from Fat 70

% Daily Value*

Total Fat 8g 12%

Saturated Fat 3.5g 17%

Cholesterol 70mg 24%

Sodium 75mg 3%

Total Carbohydrate 0g 0%

Dietary Fiber 0g 0%

Sugars 0g

Protein 23g 42%

Vitamin A 0% • Vitamin C 0%

Calcium 2% • Iron 15%

*Percent Daily Values are based on a 2,000 calorie diet.

INGREDIENTS: GROUND BEEF.
DISTRIBUTED BY THE KROGER CO.
CINCINNATI, OHIO 45202

For More Product Information, Scan UPC Using Your Kroger App or Call 800-632-6900

Our Brands. Our Guarantee. Love It or Your Money Back.
www.kroger.com



SAFE HANDLING INSTRUCTIONS

THIS PRODUCT WAS PREPARED FROM INSPECTED AND PASSED MEAT AND/OR POULTRY. SOME FOOD PRODUCTS MAY CONTAIN BACTERIA THAT COULD CAUSE ILLNESS IF THE PRODUCT IS MISHANDLED OR COOKED IMPROPERLY. FOR YOUR PROTECTION FOLLOW THESE SAFE HANDLING INSTRUCTIONS.



KEEP REFRIGERATED OR FROZEN. THAW IN REFRIGERATOR OR MICROWAVE.



KEEP RAW MEAT AND POULTRY SEPARATE FROM OTHER FOODS. WASH WORKING SURFACES (INCLUDING CUTTING BOARDS), UTENSILS, AND HANDS AFTER TOUCHING RAW MEAT OR POULTRY.



COOK THOROUGHLY.



KEEP HOT FOODS HOT. REFRIGERATE LEFTOVERS IMMEDIATELY OR DISCARD.



PACKAGED FOR MAXIMUM FRESHNESS & QUALITY!

Nutrition Facts

Serving Size 4 oz (112g)
Servings Per Container 4

Amount Per Serving

Calories 290 Calories from Fat 200

% Daily Value*

Total Fat 23g 35%

Saturated Fat 9g 43%

Cholesterol 80mg 27%

Sodium 75mg 3%

Total Carbohydrate 0g 0%

Dietary Fiber 0g 0%

Sugars 0g

Protein 19g 35%

Vitamin A 0% • Vitamin C 0%

Calcium 2% • Iron 10%

*Percent Daily Values are based on a 2,000 calorie diet.

INGREDIENTS: GROUND BEEF.
DISTRIBUTED BY THE KROGER CO.
CINCINNATI, OHIO 45202

For More Product Information, Scan UPC Using Your Kroger App or Call 800-632-6900

Our Brands. Our Guarantee. Love It or Your Money Back.
www.kroger.com



SAFE HANDLING INSTRUCTIONS

THIS PRODUCT WAS PREPARED FROM INSPECTED AND PASSED MEAT AND/OR POULTRY. SOME FOOD PRODUCTS MAY CONTAIN BACTERIA THAT COULD CAUSE ILLNESS IF THE PRODUCT IS MISHANDLED OR COOKED IMPROPERLY. FOR YOUR PROTECTION FOLLOW THESE SAFE HANDLING INSTRUCTIONS.



KEEP REFRIGERATED OR FROZEN. THAW IN REFRIGERATOR OR MICROWAVE.



KEEP RAW MEAT AND POULTRY SEPARATE FROM OTHER FOODS. WASH WORKING SURFACES (INCLUDING CUTTING BOARDS), UTENSILS, AND HANDS AFTER TOUCHING RAW MEAT OR POULTRY.



COOK THOROUGHLY.



KEEP HOT FOODS HOT. REFRIGERATE LEFTOVERS IMMEDIATELY OR DISCARD.



Nutrition Facts

74 servings per container

Serving size **2 Tbsp (5g)**

Amount per serving

Calories 15

% Daily Value*

Total Fat 1g	1%
Saturated Fat 0.5g	3%
Trans Fat 0g	
Cholesterol 5mg	1%
Sodium 0mg	0%
Total Carbohydrate 1g	0%
Dietary Fiber 0g	0%
Total Sugars 1g	
Includes 1g Added Sugars	2%
Protein 0g	
Vitamin D 0mcg	0%
Calcium 0mg	0%
Iron 0mg	0%
Potassium 10mg	0%

*The % Daily Value (DV) tells you how much a nutrient in a serving of food contributes to a daily diet. 2,000 calories a day is used for general nutrition advice.

INGREDIENTS: CREAM, WATER, SUGAR, CORN SYRUP, NONFAT MILK, CONTAINS LESS THAN 2% OF: NATURAL FLAVOR, MONO- AND DIGLYCERIDES, CARRAGEENAN, PROPELLANT: NITROUS OXIDE. CONTAINS MILK. DISTRIBUTED BY: Walmart Inc., Bentonville, AR 72716

GRADE A • PASTEURIZED • HOMOGENIZED

Nutrition Facts

About 16 servings per container

Serving size **2 tbsp (30mL)**

Amount per serving

Calories 40

% Daily Value*

Total Fat 3.5g	4%
Saturated Fat 2g	10%
Trans Fat 0g	
Cholesterol 15mg	5%
Sodium 30mg	1%
Total Carbohydrate 1g	0%
Dietary Fiber 0g	0%
Total Sugars 1g	
Includes 0g Added Sugars	0%
Protein 1g	
Vitamin D 0mcg	0%
Calcium 40mg	2%
Iron 0mg	0%
Potassium 50mg	2%

*The % Daily Value (DV) tells you how much a nutrient in a serving of food contributes to a daily diet. 2,000 calories a day is used for general nutrition advice.

INGREDIENTS: MILK, CREAM. CONTAINS: MILK.

DISTRIBUTED BY
LUCERNE FOODS, INC.
P.O. BOX 99

PLEASANTON, CA 94566-0009
1-877-232-4271



smartlabel™

Scan here for more food information or call 1-877-232-4271



7



8

Nutrition Facts

About 63 servings per container
Serving size **1 Tbsp (15mL)**

Amount per serving
Calories 50

	% Daily Value*
Total Fat 5g	6%
Saturated Fat 3.5g	18%
Trans Fat 0g	
Cholesterol 15mg	5%

Sodium 5mg **0%**

Total Carbohydrate <1g **0%**

Dietary Fiber 0g **0%**

Total Sugars <1g

Includes 0g Added Sugars **0%**

Protein 0g

Vitamin D 0mcg 0% • Calcium 0mg 0%

Iron 0mg 0% • Potassium 0mg 0%

*The % Daily Value (DV) tells you how much a nutrient in a serving of food contributes to a daily diet. 2,000 calories a day is used for general nutrition advice.

INGREDIENTS:

Heavy Cream, Skim Milk,
Contains 1% or less of: Mono
and Diglycerides, Polysorbate
80, Carrageenan.

Nutrition Facts

6 servings per container
Serving size
1/6 Pizza (130g)

Calories
per serving **320**

Amount per serving	% Daily Value*	Amount per serving	% Daily Value*
Total Fat 12g	15%	Total Carbohydrate 38g	14%
Saturated Fat 5g	25%	Dietary Fiber 2g	7%
Trans Fat 0g		Total Sugars 6g	
Cholesterol 25mg	8%	Includes 3g Added Sugars	6%
Sodium 760mg	33%	Protein 14g	17%
Vitamin D 0mcg 0% • Calcium 200mg 15% • Iron 2.5mg 15% • Potassium 130mg 2%			

*The % Daily Value (DV) tells you how much a nutrient in a serving of food contributes to a daily diet. 2,000 calories a day is used for general nutrition advice.

INGREDIENTS: ENRICHED WHEAT FLOUR (WHEAT FLOUR, NIACIN, REDUCED IRON, THIAMINE MONONITRATE, RIBOFLAVIN, AND FOLIC ACID), WATER, LOW-MOISTURE PART-SKIM MOZZARELLA CHEESE (CULTURED PART-SKIM MILK, SALT, ENZYMES), PEPPERONI MADE WITH PORK, CHICKEN AND BEEF (PORK, MECHANICALLY SEPARATED CHICKEN, BEEF, SALT, CONTAINS 2% OR LESS OF SPICES, DEXTROSE, PORK STOCK, LACTIC ACID STARTER CULTURE, OLEORESIN OF PAPRIKA, FLAVORING, SODIUM NITRITE, SODIUM ASCORBATE, PAPRIKA, PROCESSED WITH NATURAL SMOKE FLAVOR, BHA, BHT, CITRIC ACID TO HELP PROTECT FLAVOR), TOMATO PASTE, SUGAR, 2% OR LESS OF VEGETABLE OIL (SOYBEAN OIL AND/OR CORN OIL), WHEAT GLUTEN, DEGERMINATED YELLOW CORN MEAL, YEAST, SALT, DATEM, BAKING SODA, SPICES, WHEAT FLOUR, ENZYMES, DRIED GARLIC, ASCORBIC ACID (DOUGH CONDITIONER).

CONTAINS: WHEAT, MILK.

DISTRIBUTED BY NESTLÉ USA, INC., SOLON, OH 44139 USA



BEST BY: MAR 2021
0153525931E1S1575+601.40



8



8



INGREDIENTS: SUGAR, ENRICHED FLOUR (WHEAT FLOUR, MALTED BARLEY FLOUR, NIACIN, FERROUS SULFATE OR REDUCED IRON, THIAMINE MONONITRATE, RIBOFLAVIN, FOLIC ACID), WATER, PALM OIL, HYDROGENATED PALM KERNEL OIL, SOYBEAN OIL, COCOA PROCESSED WITH ALKALI, CONTAINS 2% OR LESS: GLYCERIN, NONFAT DRY MILK, DEFATTED SOY FLOUR, MONO AND DIGLYCERIDES, SODIUM ACID PYROPHOSPHATE, BAKING SODA, EGG YOLK, NATURAL AND ARTIFICIAL FLAVOR, SODIUM ALUMINUM PHOSPHATE, SALT, SOY LECITHIN, PRESERVATIVE (SORBIC ACID, SODIUM PROPIONATE, POTASSIUM SORBATE, NATAMYCIN), WHEY, DEXTROSE, DEXTRIN, CITRIC ACID, ENZYMES, GUAR GUM, CELLULOSE GUM, COLOR (ANNATTO, TURMERIC), KARAYA GUM. 527618
CONTAINS EGG, MILK, SOY, WHEAT.

CONTAINS BIOENGINEERED FOOD INGREDIENTS

Nutrition Facts

About 5 servings per container
Serving size 3 Donuts (57g)

Amount per serving
Calories 280

% Daily Value*

Total Fat 17g	22%
Saturated Fat 12g	60%
Trans Fat 0g	
Cholesterol 10mg	3%
Sodium 210mg	9%
Total Carbohydrate 31g	11%
Dietary Fiber 1g	4%
Total Sugars 18g	
Includes 17g Added Sugars	34%
Protein 2g	
Vitamin D 0mcg	0%
Calcium 0mg	0%
Iron 1.6mg	8%
Potassium 0mg	0%

*The % Daily Value (DV) tells you how much a nutrient in a serving of food contributes to a daily diet. 2,000 calories a day is used for general nutrition advice.

Nutrition Facts

About 3 servings per container
Serving size 3 Cakes (85g)

Amount per serving
Calories 380

% Daily Value*

Total Fat 18g	23%
Saturated Fat 12g	60%
Trans Fat 0g	
Cholesterol 5mg	2%
Sodium 310mg	13%
Total Carbohydrate 54g	20%
Dietary Fiber 1g	4%
Total Sugars 41g	
Includes 40g Added Sugars	80%
Protein 2g	

Vitamin D 0mcg	0%
Calcium 30mg	2%
Iron 1.8mg	10%
Potassium 150mg	4%

*The % Daily Value (DV) tells you how much a nutrient in a serving of food contributes to a daily diet. 2,000 calories a day is used for general nutrition advice.

INGREDIENTS: SUGAR, WATER, CORN SYRUP, ENRICHED FLOUR (BLEACHED WHEAT FLOUR, MALTED BARLEY FLOUR, NIACIN, FERROUS SULFATE OR REDUCED IRON, THIAMINE MONONITRATE, RIBOFLAVIN, FOLIC ACID), PALM OIL, PALM KERNEL OIL, WHEY, CONTAINS 2% OR LESS: SOYBEAN OIL, COCOA, COCOA PROCESSED WITH ALKALI, MONO AND DIGLYCERIDES, GLYCERIN, BAKING SODA, SOY LECITHIN, SALT, MODIFIED FOOD STARCH, CORN SYRUP SOLIDS, MINERAL OIL, EGG WHITES, EGG, PRESERVATIVES (SORBIC ACID, POTASSIUM SORBATE, NATAMYCIN), NATURAL AND ARTIFICIAL FLAVORS, SODIUM ACID PYROPHOSPHATE, POLYSORBATE 60, DEFATTED SOY FLOUR, SODIUM STEAROYL LACTYLATE, XANTHAN GUM, MONOCALCIUM PHOSPHATE, ENZYMES, CALCIUM CASEINATE, SODIUM CASEINATE, SOY PROTEIN ISOLATE. 527979
CONTAINS WHEAT, EGG, MILK, SOY
 CONTAINS BIOENGINEERED FOOD INGREDIENTS

Hostess Brands, LLC
 Lenexa, KS 66215
 ©2020-21 Hostess Brands, LLC



RECYCLABLE



8



8

Nutrition Facts

Serving Size 1 link (42g)
Servings Per Container 10

Amount Per Serving

Calories 130 Calories from Fat 110

% Daily Value*

Total Fat 12g **18%**

Saturated Fat 5g **25%**

Trans Fat 0.5g

Cholesterol 20mg **7%**

Sodium 360mg **15%**

Total Carbohydrate <1g **0%**

Sugars <1g

Protein 4g

Vitamin C 2% • Iron 0%

Not a significant source of Dietary Fiber,
Vitamin A and Calcium.

*Percent Daily Values are based on a 2,000 calorie diet.

INGREDIENTS: BEEF, WATER, CULTURED DEXTROSE*, CONTAINS
LESS THAN 2% OF DEXTROSE, SALT, CULTURED CELERY JUICE,
DISTILLED WHITE VINEGAR, SODIUM PHOSPHATE, CHERRY
POWDER, FLAVOR, EXTRACTIVES OF PAPRIKA.
*INGREDIENTS USED TO SUPPORT QUALITY.

DISTRIBUTED BY KRAFT HEINZ FOODS COMPANY, CHICAGO, IL 60601
1-800-322-2323. PLEASE HAVE PACKAGE AVAILABLE.

Nutrition Facts

Servings: 1, Serv. size:

1 package (42g), Amount Per Serving: Calories 210,

Total Fat 12g (16% DV), Sat. Fat 4.5g (22% DV), Trans Fat

0g, **Cholest.** <5mg (1% DV), **Sodium** 150mg (6% DV),

Total Carb. 24g (9% DV), Fiber 2g (6% DV), Total Sugars

22g (Incl. 20g Added Sugars, 40% DV), **Protein** 5g, Vit. D

10% DV, Calcium (4% DV), Iron (6% DV), Potas. (4% DV).

INGREDIENTS: MILK CHOCOLATE [SUGAR; COCOA BUTTER;
CHOCOLATE; SKIM MILK; MILK FAT; LACTOSE; LECITHIN
(SOY); PGPR]; PEANUTS; SUGAR; DEXTROSE; SALT; TBHQ
AND CITRIC ACID, TO MAINTAIN FRESHNESS. ⓁD



3, 8



3, 8





3, 8



3, 8





8



8

BASICS Ham & Cheddar with Treat

Nutrition Facts

Serving Size 1 package

Amount Per Serving

Calories 350 Calories from Fat 150

% Daily Value*

Total Fat 17g 26%

Saturated Fat 8g 40%

Trans Fat 0.5g

Cholesterol 30mg 10%

Sodium 660mg 28%

Total Carbohydrate 39g 13%

Dietary Fiber 1g 4%

Sugars 14g

Protein 11g 19%

Vitamin A 4% • Vitamin C 15%

Calcium 15% • Iron 10%

*Percent Daily Values are based on a 2,000 calorie diet. Your daily values may be higher or lower depending on your calorie needs:

	Calories 2,000	2,500
Total Fat	Less than 65g	80g
Sat Fat	Less than 20g	25g
Cholest	Less than 300mg	300mg
Sodium	Less than 2,400mg	2,400mg
Total Carb	300g	375g
Dietary Fiber	25g	30g
Protein	50g	65g

INGREDIENTS: VANILLA CREME SANDWICH COOKIE (UNBLEACHED ENRICHED FLOUR [WHEAT FLOUR, NIACIN, REDUCED IRON, THIAMINE MONONITRATE (VITAMIN B1), RIBOFLAVIN (VITAMIN B2), FOLIC ACID], SUGAR, SOYBEAN OIL, PALM OIL, HIGH FRUCTOSE CORN SYRUP, CORNSTARCH, SALT, LEAVENING [SODIUM BICARBONATE, MONOCALCIUM PHOSPHATE], NATURAL AND ARTIFICIAL FLAVOR, SOY LECITHIN [EMULSIFIER], BETA CAROTENE [FOR COLOR]), **CONTAINS: WHEAT, SOY; COOKED HAM - WATER ADDED - CHOPPED AND FORMED - SMOKE FLAVOR ADDED (HAM, WATER, CONTAINS LESS THAN 2% OF THE FOLLOWING: SODIUM LACTATE, POTASSIUM CHLORIDE, MODIFIED CORNSTARCH, SODIUM PHOSPHATE, SUGAR, SALT, SODIUM DIACETATE, SODIUM ASCORBATE, FLAVOR, SODIUM NITRITE, SMOKE FLAVOR); CHEDDAR PASTEURIZED PREPARED CHEESE PRODUCT (MILK, WATER, MILK PROTEIN CONCENTRATE, MILKFAT, WHEY, WHEY PROTEIN CONCENTRATE, SODIUM CITRATE, SALT, LACTIC ACID, SORBIC ACID AS A PRESERVATIVE, CHEESE CULTURE, ENZYMES, OLEORESIN PAPRIKA [COLOR], ANNATTO [COLOR], WITH SUNFLOWER LECITHIN FOR SLICE SEPARATION), **CONTAINS: MILK; CRACKER (ENRICHED FLOUR [WHEAT FLOUR, NIACIN, REDUCED IRON, THIAMINE MONONITRATE, RIBOFLAVIN, FOLIC ACID], PALM OIL, SUGAR, SALT, BAKING SODA, WHEY [FROM MILK], SOY LECITHIN, NATURAL FLAVOR), **CONTAINS: WHEAT, MILK, SOY.******

DISTRIBUTED BY
KRAFT HEINZ FOODS COMPANY
CHICAGO, IL 60601

VISIT US AT: LUNCHABLES.COM OR CALL US AT: 1-800-222-2323
PLEASE HAVE PACKAGE AVAILABLE, SE HABLE ESPANOL

FOR BEST QUALITY, PURCHASE AND USE BY DATE SHOWN.
DO NOT FREEZE.



PLEASE RECYCLE THIS CARD.



04050031361800/36000



© KRAFT FOODS

0 44700 36000 2

patting at indication marks. For easier slicing, place sausage in freezer for 10-15 minutes, before slicing. Place patties in a cold skillet. Cook over medium heat for 14-16 minutes, turning sausage frequently for even browning, or until center of sausage patty reaches 160°F and is no longer pink.

SAFE HANDLING INSTRUCTIONS:
THIS PRODUCT HAS BEEN PREPARED FROM INSPECTED AND PASSER MEAT AND/OR POULTRY. SOME FOOD PRODUCTS MAY CONTAIN BACTERIA THAT COULD CAUSE ILLNESS IF THE PRODUCT IS MISHANDLED OR COOKED IMPROPERLY. FOR YOUR PROTECTION, FOLLOW THESE SAFE HANDLING INSTRUCTIONS.

KEEP RAW MEAT AND POULTRY SEPARATE FROM OTHER FOODS. WASH WORKING SURFACES (INCLUDING CUTTING BOARDS), UTENSILS, AND HANDS AFTER TOUCHING RAW MEAT OR POULTRY. COOK THOROUGHLY. KEEP HOT FOODS HOT, REFRIGERATE LEFTOVERS IMMEDIATELY OR DISCARD.

INGREDIENTS: PORK, WATER, CONTAINS 2% OR LESS: CORN SYRUP, SALT, NATURAL FLAVOR, VINEGAR, SUGAR, PORK BROTH, MONOSODIUM GLUTAMATE.

Nutrition Facts

Serv. Size 2 oz

cooked portion (56g)

Servings about 6

Calories 210

Fat Cal. 170

*Percent Daily Values (DV) are based on a 2,000 calorie diet.

Amount / Serving	% DV*	Amount / Serving	% DV*
Total Fat 19g	29%	Total Carb. 2g	1%
Sat. Fat 7g	35%	Fiber 0g	0%
Trans Fat 0g		Sugars 1g	
Cholest. 35mg	12%	Protein 9g	
Sodium 420mg	18%		

Vitamin A 0% • Vitamin C 0% • Calcium 0% • Iron 2%

GLUTEN FREE

THE HILLSHIRE BRANDS COMPANY, CHICAGO, IL 60607 USA • ©2021 Tyson Foods, Inc.

Visit us at www.jimmydean.com • For questions or comments, call 1-800-925-DEAN • Preguntas O Comentarios? Llame al 1-800-925-3326



01 USE/FRZ BY JUL 21 22 000 10:17



4, 8



4, 8



Contains 10% Juice

Nutrition Facts
10 servings per container
Serv. size 1 Pouch (177ml)

Amount per serving
Calories 60

	% DV*
Total Fat 0g	0%
Sodium 15mg	1%
Total Carbohydrate 14g	5%
Total Sugars 13g	
Includes 11g Added Sugars	23%
Protein 0g	

Not a significant source of saturated fat, trans fat, cholesterol, dietary fiber, vitamin D, calcium, iron and potassium

*% DV = % Daily Value

INGREDIENTS: FILTERED WATER, SUGAR, PEAR GRAPE AND ORANGE JUICE CONCENTRATES, CITRIC ACID, PINEAPPLE AND APPLE JUICE CONCENTRATES, NATURAL FLAVOR.

KRAFT HEINZ FOODS COMPANY, CHICAGO, IL 60601

***THIS PRODUCT 13g TOTAL SUGARS, LEADING REGULAR JUICE DRINKS 20g TOTAL SUGARS PER 6 FL OZ SERVING**

CAPRI-SUN® AND THE POUCH SHAPE™ ARE LICENSED TRADEMARKS OF THE CAPRI SUN GROUP.

DO NOT DRINK IF POUCH IS LEAKING, DAMAGED, OR SWOLLEN AS FERMENTATION CAN OCCUR.

Contact us at: 1-800-227-7478

PLEASE REFER TO CODE NUMBERS ON SIDE PANEL OR ON POUCH WHEN CONTACTING US.



4, 8



4, 8



Contains 10% Juice

Nutrition Facts

10 servings per container

Serv. size 1 Pouch (177ml)

Amount per serving
Calories 60

% DV*

Total Fat 0g 0%

Sodium 15mg 1%

Total Carbohydrate 14g 5%

Total Sugars 13g

Includes 11g Added Sugars 23%

Protein 0g

Not a significant source of saturated fat, trans fat, cholesterol, dietary fiber, vitamin D, calcium, iron and potassium

*% DV = % Daily Value
INGREDIENTS: FILTERED WATER, SUGAR, PEAR GRAPE AND ORANGE JUICE CONCENTRATES, CITRIC ACID, PINEAPPLE AND APPLE JUICE CONCENTRATES, NATURAL FLAVOR.

KRAFT HEINZ FOODS COMPANY, CHICAGO, IL 60601

†THIS PRODUCT 13g TOTAL SUGARS, LEADING REGULAR JUICE DRINKS 20g TOTAL SUGARS PER 6 FL OZ SERVING

CAPRI-SUN® AND THE POUCH SHAPE™ ARE LICENSED TRADEMARKS OF THE CAPRI SUN GROUP. DO NOT DRINK IF POUCH IS LEAKING, DAMAGED, OR SWOLLEN AS FERMENTATION CAN OCCUR.

Contact us at: 1-800-227-7478

PLEASE REFER TO CODE NUMBERS ON SIDE PANEL OR ON POUCH WHEN CONTACTING US.



Nutrition Facts

About 3 servings per container

Serving size

2.5 oz (70g/ about 1/3 box)
(Makes about 1 cup)

	Per 2.5 oz dry mix	Per 1 cup prepared*
Calories	250	350
	% DV**	% DV**
Total Fat	2g 2%	11g 15%
Saturated Fat	1g 4%	4g 19%
Trans Fat	0g	0g
Cholesterol	5mg 2%	10mg 3%
Sodium	560mg 24%	710mg 31%
Total Carb.	49g 18%	50g 18%
Dietary Fiber	2g 8%	2g 8%
Total Sugars	9g	10g
Incl. Added Sugars	0g 0%	0g 0%
Protein	9g	10g
Vitamin D	0mcg 0%	0mcg 0%
Calcium	110mg 8%	130mg 10%
Iron	2.5mg 15%	2.5mg 15%
Potassium	330mg 8%	370mg 8%

* As prepared using margarine with 0g trans fat and 2% reduced fat milk.
** The % Daily Value (DV) tells you how much a nutrient in a serving of food contributes to a daily diet. 2,000 calories a day is used for general nutrition advice.

INGREDIENTS: ENRICHED MACARONI (WHEAT FLOUR, DURUM FLOUR, NIACIN, FERROUS SULFATE (IRON), THIAMIN MONONITRATE (VITAMIN B1), RIBOFLAVIN (VITAMIN B2), FOLIC ACID), CHEESE SAUCE MIX (WHEY, MILKFAT, SALT, MILK PROTEIN CONCENTRATE, SODIUM TRIPHOSPHATE, CONTAINS LESS THAN 2% OF TAPIOCA FLOUR, CITRIC ACID, LACTIC ACID, SODIUM PHOSPHATE, CALCIUM PHOSPHATE, WITH PAPRIKA, TURMERIC, AND ANNATTO ADDED FOR COLOR, ENZYMES, CHEESE CULTURE),
CONTAINS: WHEAT, MILK.





3,7



3,7

INGREDIENTS: CHEDDAR CHEESE (CULTURED MILK, SALT, ENZYMES), SKIM MILK, MILKFAT, MILK PROTEIN CONCENTRATE, WHEY, CALCIUM PHOSPHATE, SODIUM PHOSPHATE, CONTAINS LESS THAN 2% OF MODIFIED FOOD STARCH, SALT, LACTIC ACID, MILK, ANNATTO AND PAPRIKA EXTRACT (COLOR), NATAMYCIN (A NATURAL MOLD INHIBITOR), ENZYMES, CHEESE CULTURE, VITAMIN D3.

CONTAINS: MILK.

FOODS COMPANY
CHICAGO, IL 60601
BEST WHEN USED BY DATE SHOWN



Nutrition Facts

16 servings per container
Serving size
1 slice (21g)

Calories
per serving

60

Amount/serving	% Daily Value*	Amount/serving	% Daily Value*
Total Fat 4g	5%	Total Carbohydrate 2g	1%
Saturated Fat 2.5g	12%	Dietary Fiber 0g	0%
<i>Trans</i> Fat 0g		Total Sugars 2g	
Cholesterol 15mg	5%	Includes 0g Added Sugars	0%
Sodium 250mg	11%	Protein 3g	

*The % Daily Value tells you how much a nutrient in a serving of food contributes to a daily diet. 2,000 calories a day is used for general nutrition advice.

Vitamin D 1.2mcg 6% • Calcium 340mg 25% • Iron 0mg 0% • Potassium 0mg 0%

Nutrition Facts

About 8 servings per container
Serving size
1 oz (28g)

Calories
per serving **90**

Amount/serving	% Daily Value*	Amount/serving	% Daily Value*
Total Fat 6g	7%	Total Carbohydrate 1g	0%
Saturated Fat 3.5g	18%	Dietary Fiber 0g	0%
<i>Trans</i> Fat 0g		Total Sugars 0g	
Cholesterol 15mg	5%	Includes 0g Added Sugars	0%
Sodium 210mg	9%	Protein 8g	

*The % Daily Value (DV) tells you how much a nutrient in a serving of food contributes to a daily diet. 2,000 calories a day is used for general nutrition advice.

Vitamin D 0.1mcg 0% • Calcium 200mg 15% • Iron 0mg 0% • Potassium 50mg 0%

INGREDIENTS: LOW-MOISTURE PART-SKIM MOZZARELLA CHEESE (CULTURED PASTEURIZED REDUCED FAT MILK, SALT, ENZYMES).

S1295





3,7



3,7

Nutrition Facts

16 servings per container
Serving size
1 slice (21g)

Calories **60**
 per serving

Amount/serving	% Daily Value*	Amount/serving	% Daily Value*
Total Fat 4g	5%	Total Carbohydrate 2g	1%
Saturated Fat 2.5g	12%	Dietary Fiber 0g	0%
<i>Trans Fat</i> 0g		Total Sugars 2g	
Cholesterol 15mg	5%	Includes 0g Added Sugars	0%
Sodium 250mg	11%	Protein 3g	

*The % Daily Value tells you how much a nutrient in a serving of food contributes to a daily diet. 2,000 calories a day is used for general nutrition advice.

Vitamin D 1.2mcg 6% • Calcium 340mg 25% • Iron 0mg 0% • Potassium 0mg 0%

INGREDIENTS: CHEDDAR CHEESE (CULTURED MILK, SALT, ENZYMES), SKIM MILK, MILKFAT, MILK PROTEIN CONCENTRATE, WHEY, CALCIUM PHOSPHATE, SODIUM PHOSPHATE, CONTAINS LESS THAN 2% OF MODIFIED FOOD STARCH, SALT, LACTIC ACID, MILK, ANNATTO AND PAPRIKA EXTRACT (COLOR), NATAMYCIN (A NATURAL MOLD INHIBITOR), ENZYMES, CHEESE CULTURE, VITAMIN D3.

CONTAINS: MILK.

FOODS COMPANY
CHICAGO, IL 60601
BEST WHEN USED BY DATE SHOWN



Nutrition Facts

About 8 servings per container
Serving size
1 oz (28g)

Calories **90**
 per serving

Amount/serving	% Daily Value*	Amount/serving	% Daily Value*
Total Fat 6g	7%	Total Carbohydrate 1g	0%
Saturated Fat 3.5g	18%	Dietary Fiber 0g	0%
<i>Trans Fat</i> 0g		Total Sugars 0g	
Cholesterol 15mg	5%	Includes 0g Added Sugars	0%
Sodium 210mg	9%	Protein 8g	

*The % Daily Value (DV) tells you how much a nutrient in a serving of food contributes to a daily diet. 2,000 calories a day is used for general nutrition advice.

Vitamin D 0.1mcg 0% • Calcium 200mg 15% • Iron 0mg 0% • Potassium 50mg 0%

INGREDIENTS: LOW-MOISTURE PART-SKIM MOZZARELLA CHEESE (CULTURED PASTEURIZED REDUCED FAT MILK, SALT, ENZYMES).

S1295





5



5

Nutrition Facts

10 servings per container
Serving size 1 tortilla (49g)

Amount per serving
Calories 140


	% Daily Value*
Total Fat 3g	4%
Saturated Fat 1g	5%
Trans Fat 0g	
Cholesterol 0mg	0%
Sodium 410mg	18%
Total Carbohydrate 24g	9%
Dietary Fiber 1g	4%
Total Sugars 2g	
Includes 1g Added Sugars	2%
Protein 4g	

Vit. D 0mcg 0% • Calcium 90mg 6%
 Iron 2mg 10% • Potassium 50mg 2%

*The % Daily Value (DV) tells you how much a nutrient in a serving of food contributes to a daily diet. 2,000 calories a day is used for general nutrition advice.

INGREDIENTS: ENRICHED BLEACHED FLOUR (FLOUR, NIACIN, REDUCED IRON, THIAMINE MONONITRATE, RIBOFLAVIN, FOLIC ACID), WATER, VEGETABLE SHORTENING (INTERESTERIFIED AND HYDROGENATED SOYBEAN OILS), CONTAINS 2% OR LESS OF: SALT, SUGAR, BAKING SODA, SODIUM ACID PYROPHOSPHATE, DISTILLED MONOGLYCERIDES, FUMARIC ACID, AND CALCIUM PROPIONATE AND SORBIC ACID (TO MAINTAIN FRESHNESS).

CONTAINS: WHEAT
 ©2021 Gnuma Corporation
 Irving, TX 75038



Nutrition Facts

10 servings per container
Serving size 1 tortilla (45g)

Amount per serving
Calories 140

	% Daily Value*
Total Fat 3.5g	4%
Saturated Fat 1.5g	8%
Trans Fat 0g	
Cholesterol 0mg	0%
Sodium 510mg	22%
Total Carbohydrate 24g	9%
Dietary Fiber 3g	11%
Total Sugars 1g	
Includes 0g Added Sugars	0%
Protein 4g	

Vitamin D 0mcg 0% • Calcium 100mg 8%
 Iron 2mg 10% • Potassium 130mg 2%

*The % Daily Value tells you how much a nutrient in a serving of food contributes to a daily diet. 2,000 calories a day is used for general nutrition advice.

INGREDIENTS: WHOLE WHEAT FLOUR, WATER, VEGETABLE SHORTENING (INTERESTERIFIED SOYBEAN OIL, SOYBEAN OIL, HYDROGENATED COTTONSEED OIL), CONTAINS 2% OR LESS OF: LEAVENING (BAKING SODA, SODIUM ALUMINUM SULFATE, CORN STARCH, MONOCALCIUM PHOSPHATE, CALCIUM SULFATE), SALT, MOLASSES, VITAL WHEAT GLUTEN, FUMARIC ACID, MONO- AND DIGLYCERIDES, FULLY HYDROGENATED COTTONSEED OIL, GUAR GUM, SODIUM METABISULFITE, CALCIUM PROPIONATE AND POTASSIUM SORBATE (PRESERVATIVES), ENZYMES. CONTAINS: WHEAT.

DISTRIBUTED BY THE KROGER CO., CINCINNATI, OHIO 45202
 CONTAINS A BIOENGINEERED FOOD INGREDIENT
 KEEP IN A COOL, DRY PLACE / LOT NUMBER AND BEST IF USED BY DATE: ON PACKAGE

For best results
before

Warming

CONVENTIONAL
 Remove desired amount from package. Warm in medium-high heat until soft.

MICROWAVE PREPARED
 Remove desired amount from package. Place between paper towels. Microwave to 20 seconds.

CAUTION
 Microwaving the tortilla may cause the paper to melt on any surface the bag touches.



For More Product Information
 Using Your Kroger App



Lean Cuisine

CLASSIC TASTE YOU LOVE

FEATURES

Steak Portabella
tender beef steak & portabella mushrooms in a savory beef sauce with broccoli

18g PROTEIN **160 CALORIES**

7g NET CARBS*

PER PACKAGE

160 CALORIES	2.5% SAT FAT 14% DV	770mg SODIUM 33% DV	2g TOTAL SUGARS	18g PROTEIN 36% DV
------------------------	----------------------------------	----------------------------------	---------------------------	---------------------------------

SEE NUTRITION INFORMATION FOR SODIUM CONTENT

U.S. INSPECTED AND GRADED BY DEPARTMENT OF AGRICULTURE

KEEP FROZEN - SERVING SUGGESTION
COOK THOROUGHLY

NET WT 7 1/2 OZ (212g)

3



Marie Callender's

Honey Roasted Turkey Breast
Turkey Breast in a Sweet Gravy served with Creamy Mashed Potatoes and Vegetables

KEEP FROZEN
MUST BE COOKED THOROUGHLY

19g of Protein
No Artificial Flavors | No Artificial Colors

NET WT 13 OZ (369g)

260 CALORIES	3.5% SAT FAT 7% DV	1040mg SODIUM 43% DV	6g TOTAL SUGARS
------------------------	---------------------------------	-----------------------------------	---------------------------

3, 8

Nutrition Facts

1 serving per container
Serving size 1 Package (212g)

Amount per serving
Calories 160

% Daily Value*

Total Fat 5g	6%
Saturated Fat 2.5g	13%
Trans Fat 0g	
Polyunsaturated Fat 0g	
Monounsaturated Fat 2g	
Cholesterol 15mg	5%
Sodium 770mg	33%
Total Carbohydrate 10g	4%
Dietary Fiber 3g	11%
Total Sugars 2g	
Includes <1g Added Sugars	2%
Protein 18g	26%
Vitamin D 0mcg	0%
Calcium 50mg	4%
Iron 1.1mg	6%
Potassium 360mg	8%

*The % Daily Value (DV) tells you how much a nutrient in a serving of food contributes to a daily diet. 2,000 calories a day is used for general nutrition advice.



INGREDIENTS: BROCCOLI, COOKED BRAISED PRIME RIB BEEF STEAK STRIPS AND MODIFIED CORN STARCH PRODUCT CARAMEL COLOR ADDED (BEEF, BEEF BROTH, MODIFIED CORN STARCH, SALT, SODIUM PHOSPHATES, DEXTROSE, CARAMEL COLOR, NATURAL FLAVORS), WATER, PORTABELLA MUSHROOMS, ONIONS, 2% OR LESS OF MODIFIED CORNSTARCH, TOMATO PUREE (WATER, TOMATO PASTE), BUTTER (CREAM, SALT), SALT, GUM ACACIA, SUGAR, SOY SAUCE (WATER, WHEAT, SOYBEANS, SALT), MUSHROOM JUICE CONCENTRATE, GARLIC, CARROTS, CELERY, CARAMEL COLOR, DRIED ONIONS, DRIED BEEF BROTH, FLAVORING, MALTODEXTRIN, SPICE, SOY SAUCE (WATER, SOYBEANS, WHEAT, SALT), SHERRY WINE, ENZYME MODIFIED CREAM, LACTIC ACID, DISODIUM PHOSPHATE, GRILL FLAVOR (FROM VEGETABLE OIL), SMOKE FLAVOR.
CONTAINS: WHEAT, MILK, SOY INGREDIENTS.

DISTRIBUTED BY NESTLÉ USA, INC., SOLON, OH 44139 USA

15650 Proof of Purchase

0180555012 J EST 9015 0816 JAN2022

Best Before

Nutrition Facts

Serving size 1 Meal (369g)

Amount per serving
Calories 260

% Daily Value*

Total Fat 6g	8%
Saturated Fat 3.5g	18%
Trans Fat 0g	
Cholesterol 45mg	15%
Sodium 1040mg	45%
Total Carbohydrate 31g	11%
Dietary Fiber 5g	18%
Total Sugars 6g	
Includes 5g Added Sugars	10%
Protein 19g	24%
Vitamin D 0mcg	0%
Calcium 30mg	2%
Iron 0.7mg	4%
Potassium 750mg	15%

*The % Daily Value (DV) tells you how much a nutrient in a serving of food contributes to a daily diet. 2,000 calories a day is used for general nutrition advice.

INGREDIENTS: MASHED POTATOES (REHYDRATED POTATO FLAKES AND GRANULES [WATER, POTATOES, MONO- AND DIGLYCERIDES, CITRIC ACID, DISODIUM DIHYDROGEN PYROPHOSPHATE, BHT, SODIUM BISULFITE], BUTTER [CREAM, SALT], CREAM, SALT, FLAVORING), SWEET GRAVY (WATER, BROWN SUGAR, MODIFIED CORN STARCH, CONTAINS 2% OR LESS OF: CHICKEN FLAVOR [CHICKEN BROTH, SALT, CHICKEN FAT], CHICKEN GLACE [CHICKEN BROTH, COOKED CHICKEN, CHICKEN FAT, SALT, FLAVORINGS], BUTTER [CREAM, SALT], ONIONS, SALT, CHARDONNAY WINE, CANOLA OIL, GARLIC, SPICE), HONEY ROASTED TURKEY (TURKEY BREAST TENDERLOIN, WATER, HONEY, ISOLATED SOY PROTEIN PRODUCT [ISOLATED SOY PROTEIN, MODIFIED POTATO STARCH, CORN STARCH, CARRAGEENAN, SOY LECITHIN], OLIVE OIL, CHICKEN FLAVOR [MALTODEXTRIN, CHICKEN BROTH, SALT, FLAVORS], SALT, POTASSIUM CHLORIDE, POTASSIUM AND SODIUM PHOSPHATES, SEASONING [SPICE EXTRACTIVES WITH POLYSORBATE 80, CANOLA OIL, MEDIUM CHAIN TRIGLYCERIDES, PROPYLENE GLYCOL, FLAVORS, SOY LECITHIN]), CARROTS, BROCCOLI, WATER.
CONTAINS: MILK, SOY.



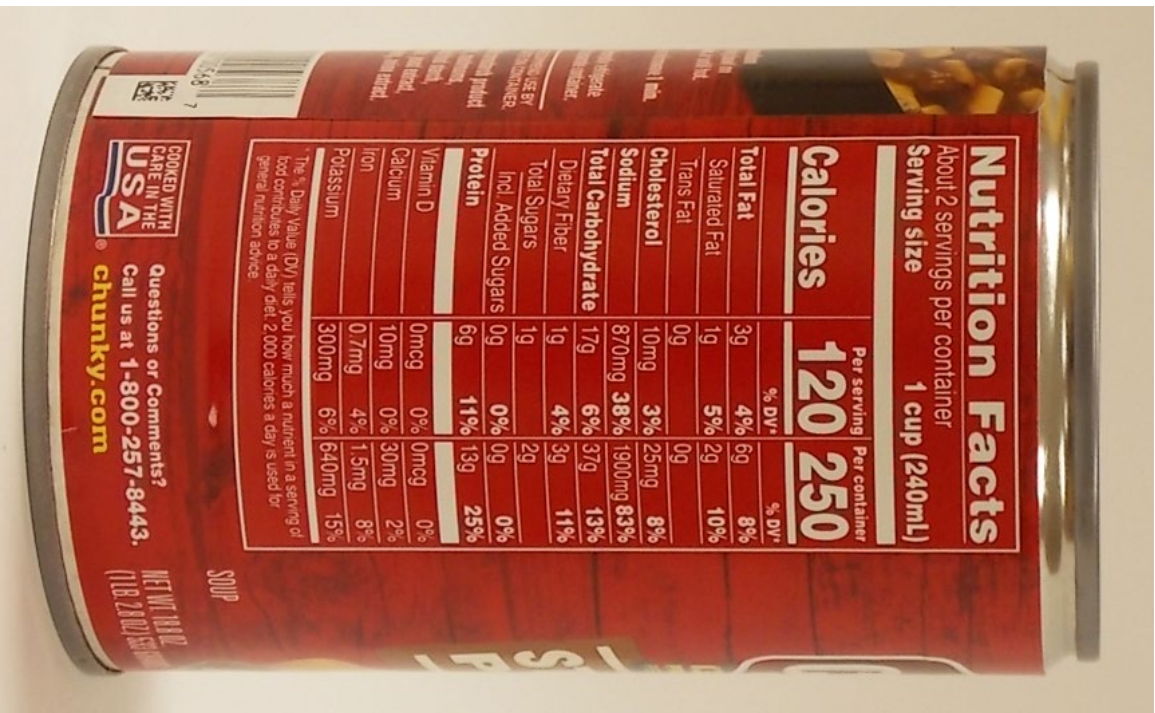


Nutrition Facts
About 2 servings per container
Serving size 1 cup (249g)

	Per Serving	Per Can
	110	240
	% DV*	% DV*
Calories	110	240
Total Fat	0g	1g
	0%	1%
Saturated Fat	0g	0g
	0%	0%
Trans Fat	0g	0g
	0%	0%
Cholesterol	0mg	0mg
	0%	0%
Sodium	680mg	1470mg
	30%	64%
Total Carbohydrate	20g	43g
	7%	16%
Dietary Fiber	3g	7g
	11%	24%
Total Sugars	1g	3g
Incl. Added Sugars	0g	0g
	0%	0%
Protein	6g	14g
Vitamin D	0mcg	0mcg
	0%	0%
Calcium	0mg	40mg
	0%	2%
Iron	1.7mg	3.6mg
	8%	15%
Potassium	230mg	490mg
	4%	10%

*The % Daily Value (DV) tells you how much a nutrient in a serving of food contributes to a daily diet. 2,000 calories a day is used for general nutrition advice.

BEST If Used By date on can end 386922803



Nutrition Facts
About 2 servings per container
Serving size 1 cup (240mL)

	Per Serving	Per Can
	120	250
	% DV*	% DV*
Calories	120	250
Total Fat	3g	6g
	4%	8%
Saturated Fat	1g	2g
	5%	10%
Trans Fat	0g	0g
	0%	0%
Cholesterol	10mg	25mg
	3%	8%
Sodium	870mg	1900mg
	38%	83%
Total Carbohydrate	17g	37g
	6%	13%
Dietary Fiber	1g	3g
	4%	11%
Total Sugars	0g	0g
Incl. Added Sugars	0g	0g
	0%	0%
Protein	6g	13g
	11%	25%
Vitamin D	0mcg	0mcg
	0%	0%
Calcium	10mg	30mg
	0%	2%
Iron	0.7mg	1.5mg
	4%	8%
Potassium	300mg	640mg
	6%	15%

*The % Daily Value (DV) tells you how much a nutrient in a serving of food contributes to a daily diet. 2,000 calories a day is used for general nutrition advice.

COOKED WITH CARE IN THE USA
Questions or Comments? Call us at 1-800-257-8443.
chunky.com



7



7

Nutrition Facts

4 servings per container
Serving size 8 fl oz (240 mL)

Amount per serving
Calories 110

	% Daily Value*
Total Fat 2.5g	3%
Saturated Fat 1.5g	8%
Trans Fat 0g	
Cholesterol 15mg	4%
Sodium 380mg	17%
Total Carbohydrate 13g	5%
Dietary Fiber 0g	0%
Total Sugars 12g	
Includes 0g Added Sugars	0%
Protein 8g	
Vitamin D 2.5mcg 10%	• Calcium 300mg 25%
Iron 0mg 0%	• Potassium 380mg 8%
Vitamin A 150mcg 15%	

*The % Daily Value tells you how much a nutrient in a serving of food contributes to a daily diet. 2,000 calories a day is used for general nutrition advice.

INGREDIENTS: CULTURED SKIM MILK AND MILK, SALT, MODIFIED CORN STARCH, TAPIOCA STARCH, SODIUM CITRATE, LOCUST BEAN GUM, CARRAGEENAN, VITAMIN A PALMITATE, VITAMIN D3.
CONTAINS: MILK.

DISTRIBUTED BY THE KROGER CO.
CINCINNATI, OHIO 45202
CONTAINS A BIOENGINEERED FOOD INGREDIENT

Nutrition Facts

About 4 servings per container
Serving size 1 cup (240 mL)

Amount per serving
Calories 110

	% Daily Value*
Total Fat 2g	3%
Saturated Fat 1.5g	8%
Trans Fat 0g	
Cholesterol 10mg	3%
Sodium 125mg	5%
Total Carbohydrate 9g	3%
Dietary Fiber 0g	0%
Total Sugars 9g	
Includes 0g Added Sugars	0%
Protein 10g	16%
Vitamin D 3.8mcg 20%	• Calcium 390mg 30%
Iron 0mg 0%	• Potassium 380mg 8%

*The % Daily Value tells you how much a nutrient in a serving of food contributes to a daily diet. 2,000 calories a day is used for general nutrition advice.

INGREDIENTS: PASTEURIZED ORGANIC LOWFAT MILK, ORGANIC NONFAT MILK, PECTIN, VITAMIN A PALMITATE, VITAMIN D3, LIVE AND ACTIVE CULTURES.
CONTAINS: MILK.

DISTRIBUTED BY THE KROGER CO.
CINCINNATI, OHIO 45202
CONTAINS A BIOENGINEERED FOOD INGREDIENT



5



5

Nutrition Facts

about 20 servings per container
Serving size
 1/4 cup (45g) dry

Calories
 per serving **170**

Amount/serving	% Daily Value*
Total Fat 1.5g	2%
Saturated Fat 0g	0%
Trans Fat 0g	
Cholesterol 0mg	0%
Sodium 0mg	0%

Vitamin D 0mcg 0% • Calcium 0mg 0% • Iron 0.6mg 4% • Potassium 110mg 2%

Amount/serving	% Daily Value*
Total Carbohydrate 34g	12%
Dietary Fiber 2g	7%
Total Sugars 0g	
Includes 0g Added Sugars	0%
Protein 3g	

*The % Daily Value (DV) tells you how much a nutrient in a serving of food contributes to a daily diet. 2,000 calories a day is used for general nutrition advice.

INGREDIENTS: LONG GRAIN BROWN RICE.
DISTRIBUTED BY: Walmart Inc., Bentonville, AR 72716

BEST IF USED BY
 MAY 26 2021S

GOOD TASTE



GOOD HEALTH

100% WHOLE GRAIN

WholeGrainCovers.org

BPA-Free

LUNDBERG RICE

MIDBLEND

CULTIVATING A FAMILY TRADITION

Over the years, the Lundberg family has produced high quality rice products. It's our passion and has been for over four generations.

We've grown our rice sustainably, long before anyone used the word. Our farming methods conserve water resources, build soil fertility, and support a healthier ecosystem.

All Lundberg family Farms® are operated in whole grain, and gluten-free rice products. Nothing fancy here, just lots of natural deliciousness.

Thanks for supporting sustainable farming!

—The Lundberg Family

Manufactured & Bottled by:
 Lundberg Family Farms®
 5311 Michael, P.O. Box 362, Redwood, CA 95474, USA
 888-765-2388
 www.lundberg.com

GF Certified Gluten Free
 Gluten Free Certification Organization
 800-955-8843
 www.gfcog.org

GF Gluten Free
 Gluten Free Certification Organization
 800-955-8843
 www.gfcog.org

We recommend refrigeration for extended shelf life.

This product was manufactured with 100% renewable energy.

WETTED and PRESS-COOK are used with permission.

Nutrition Facts

About 10 SERVINGS
 Serv. size 1/4 cup (dry) (45g)

Calories 160

Amount per serving	% Daily Value*
Total Fat 1g	
Sat. Fat 0g	1%
Trans Fat 0g	0%
Cholest. 0mg	0%
Sodium 0mg	0%
Total Carb. 35g	13%
Fiber 2g	14%
Total Sugars 0g	
Incl. 0g Added Sugars	0%
Protein 4g	
Vit. D 0mcg 0% • Calcium 4mg 0%	
Iron 1mg 6% • Pops. 136mg 2%	

*The % Daily Value tells you how much a nutrient in a serving of food contributes to a daily diet. 2,000 calories a day is used for general nutrition advice.

INGREDIENTS: Long Grain Brown Rice, Sweet Brown Rice, Wild Rice, Weiborn® Red Rice, Black Rice.





Nutrition Facts

9 servings per container
Serving size **1/4 cup dry**
(45g)

Amount Per Serving
Calories 170

	% Daily Value*
Total Fat 0.5g	1%
Saturated Fat 0g	0%
Trans Fat 0g	
Cholesterol 0mg	0%
Sodium 0mg	0%
Total Carbohydrate 35g	13%
Dietary Fiber 3g	11%
Total Sugars 1g	
Includes 0g Added Sugars	0%
Protein 7g	
Vitamin D 0mcg	0%
Calcium 10mg	0%
Iron 0.9mg	6%
Potassium 200mg	4%

*The % Daily Value (DV) tells you how much a nutrient in a serving of food contributes to a daily diet. 2,000 calories a day is used for general nutrition advice.

EP 5
water and
for taste

EP 4
and cook
minutes

EP 3
cup of
rice

EP 2
4 cups
water

EP 1
wild rice
oughly

COOKING
INSTRUCTIONS
wild rice
oughly

INGREDIENTS: WILD RICE
DISTRIBUTED BY:
MATTREYA
2665 POKONA BLVD
FONONUA, CA 91778
WWW.PUREMATTREYA.COM

LOT: BR2020
BEST BY: 06/2024



United States

Nutrition Facts

About 10 servings per container
Serving size **1/4 cup (45g)**

Amount per serving
Calories 160

	% Daily Value*
Total Fat 0g	0%
Saturated Fat 0g	0%
Trans Fat 0g	
Cholesterol 0mg	0%
Sodium 0mg	0%
Total Carbohydrate 34g	12%
Dietary Fiber 3g	11%
Total Sugars 1g	
Includes 0g Added Sugars	0%
Protein 7g	
Vitamin D 0mcg	0%
Iron 1mg	6%
Thiamin 0.1mg	8%
Vitamin B6 0.2mg	10%
Zinc 3mg	25%
Calcium 0mg	0%
Potassium 190mg	4%
Niacin 4mg	25%
Phosphorus 195mg	15%

*The % Daily Value tells you how much a nutrient in a serving of food contributes to a daily diet. 2,000 calories a day is used for general nutrition advice.

INGREDIENTS: WILD RICE.



8



8



Nutrition Facts

about 15 servings per container
Serving size 2 Tbsp (31g)

Amount per serving
Calories 15

	% Daily Value*
Total Fat 0g	0%
Sodium 230mg	10%
Total Carbohydrate 3g	1%
Dietary Fiber 1g	4%
Total Sugars 1g	
Includes 0g Added Sugars	0%
Protein 0g	

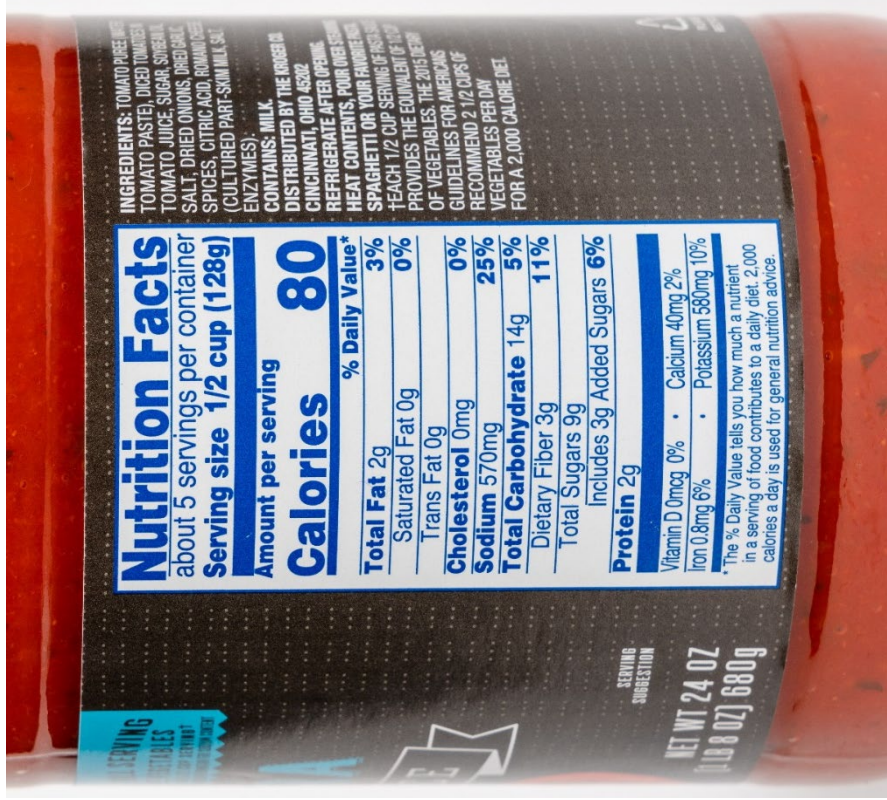
Calcium 10mg 2% • Potassium 100mg 2%
 Not a significant source of saturated fat, trans fat, cholesterol, vitamin D, iron.

* The % Daily Value tells you how much a nutrient in a serving of food contributes to a daily diet. 2,000 calories a day is used for general nutrition advice.

INGREDIENTS: CRUSHED TOMATOES, CRUSHED TOMATO CONCENTRATE, TOMATOES IN TOMATO JUICE, PEPPERS, ONIONS, JALAPENO, ONION, DRIED GARLIC, GARLIC POWDER, CITRIC ACID, SALT, DRIED TOMATOES.
 DISTRIBUTED BY THE HERSHEY COMPANY
 CINCINNATI, OHIO 45202
 REFRIGERATE AFTER OPENING.
 SHAKE WELL BEFORE USE.

QUALITY GUARANTEE
 800-632-6900 • www.hershey.com

0 11110-65
 108807J 680g



Nutrition Facts

about 5 servings per container
Serving size 1/2 cup (128g)

Amount per serving
Calories 80

	% Daily Value*
Total Fat 2g	3%
Saturated Fat 0g	0%
Trans Fat 0g	
Cholesterol 0mg	0%
Sodium 570mg	25%
Total Carbohydrate 14g	5%
Dietary Fiber 3g	11%
Total Sugars 9g	
Includes 3g Added Sugars	6%
Protein 2g	

Vitamin D 0mcg 0% • Calcium 40mg 2%
 Iron 0.8mg 6% • Potassium 580mg 10%

* The % Daily Value tells you how much a nutrient in a serving of food contributes to a daily diet. 2,000 calories a day is used for general nutrition advice.

INGREDIENTS: TOMATO PUREE (WATER, TOMATO PASTE), DICED TOMATOES, TOMATO JUICE, SUGAR, SODIUM CITRATE, CITRIC ACID, SALT, DRIED ONIONS, DRIED GARLIC, GARLIC POWDER, CITRIC ACID, ROMANO CHEESE (CULTURED PART-SKIM MILK, SALT, ENZYMES).
 CONTAINS: MILK.
 DISTRIBUTED BY THE HERSHEY COMPANY
 CINCINNATI, OHIO 45202
 REFRIGERATE AFTER OPENING.
 HEAT CONTENTS: FOUR OZES SERVING PROVIDES THE EQUIVALENT OF 1 1/2 CUPS OF SPAGHETTI OR YOUR FAVORITE PASTA. RECOMMEND 2 1/2 CUPS OF PASTA PER SERVING.
 PROVIDES THE EQUIVALENT OF 1 1/2 CUPS OF VEGETABLES. THE 2015 Dietary Guidelines for Americans recommends 2 1/2 cups of vegetables per day for a 2,000 calorie diet.

SERVING SUGGESTION

NET WT 24 OZ (680g)

INGREDIENTS: TOMATO PUREE (WATER, TOMATO PASTE), DICED TOMATOES IN TOMATO JUICE, SUGAR, SOYBEAN OIL, SALT, DRIED ONIONS, DRIED GARLIC, SPICES, CITRIC ACID, ROMANO CHEESE (CULTURED PART-SKIM MILK, SALT, ENZYMES).
CONTAINS: MILK.

INGREDIENTS: CRUSHED TOMATOES (WATER, CRUSHED TOMATO CONCENTRATE), DICED TOMATOES IN TOMATO JUICE, JALAPENO PEPPERS, ONIONS, VINEGAR, SALT, DRIED ONION, DRIED GARLIC, NATURAL FLAVOR.



5



5

Nutrition Facts

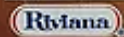
2 servings per container
Serving size 1 Cup (125g)

Calories per serving **220**

Amount/serving	% Daily Value*	Amount/serving	% Daily Value*
Total Fat 3g	4%	Total Carbohydrate 42g	15%
Saturated Fat 0g	0%	Dietary Fiber 5g	18%
Trans Fat 0g		Total Sugars 1g	
Cholesterol 0mg	0%	Includes 0g Added Sugars	0%
Sodium 120mg	5%	Protein 5g	

Vitamin D 0mcg 0% • Calcium 0mg 0% • Iron 1mg 6% • Potassium 149mg 4%

INGREDIENTS: WATER, BROWN RICE, WILD RICE, SUNFLOWER OIL, SEA SALT, SUNFLOWER LECITHIN (EMULSIFIER).



© RIVIANA FOODS INC., 2018 HOUSTON, TX 77019 U.S.A.
®/TM: WE CAN HELP AND RIVIANA AND 11-MINUTE DESIGN ARE TRADEMARKS OF RIVIANA FOODS INC.

Good Source of Fiber*

*CONTAINS 3 GRAMS OF TOTAL FIBER PER SERVING. SEE NUTRITION INFORMATION FOR FAT CONTENT.

DIRECTIONS

REMOVE film completely from cup.

PLACE cup in microwave.

HEAT on HIGH for 1 minute.

Heating time for 2 cups is 1 1/2 minutes.

CAUTION: CUP & STEAM WILL BE EXTREMELY HOT. DO NOT PLACE HAND OVER TOP OF CUP WHEN REMOVING.

STIR & serve immediately.

Microwave ovens and cooking times may vary.

Cover and refrigerate unused portion after opening.

✓ BPA FREE ✓ GLUTEN FREE

Nutrition Facts

about 20 servings per container
Serving size
1/4 cup (45g)

Calories per serving **170**

Amount/serving	% Daily Value*	Amount/serving	% Daily Value*
Total Fat 1.5g	2%	Total Carbohydrate 34g	12%
Saturated Fat 0g	0%	Dietary Fiber 2g	7%
Trans Fat 0g		Total Sugars 0g	
Cholesterol 0mg	0%	Includes 0g Added Sugars	0%
Sodium 0mg	0%	Protein 3g	

Vitamin D 0mcg 0% • Calcium 0mg 0% • Iron 1mg 6% • Potassium 115mg 2%

* The % Daily Value tells you how much a nutrient in a serving of food contributes to a daily diet. 2000 calories a day is used for general nutrition advice.

INGREDIENTS: Brown rice.

RIVIANA FOODS INC.,
HOUSTON, TX 77019 U.S.A.
© 2018 Riviana Foods Inc.



© Mahatma and Riviana and TM Mahatma Design are trademarks of Riviana Foods Inc.

Questions? Comments?
Call 1-800-226-9522 Monday-Friday,
8am to 4pm Central Time. Please have
package available when calling.

* Based on Nielsen non-instant rice category data 2018



5



5

Nutrition Facts

About 8 servings per container
Serving size 1/2 cup (50g dry rice, makes about 1 cup cooked)

Amount per serving
Calories 180

	% Daily Value*
Total Fat 1.5g	2%
Saturated Fat 0g	0%
Trans Fat 0g	
Cholesterol 0mg	0%
Sodium 0mg	0%
Total Carbohydrate 39g	14%
Dietary Fiber 2g	7%
Total Sugars 0g	
Includes 0g Added Sugars	0%
Protein 4g	
Vitamin D 0mcg	0%
Calcium 0mg	0%
Iron 0mg	0%
Potassium 70mg	2%
Thiamin 0.1mg	8%
Magnesium 61mg	15%
Zinc 1mg	10%
Copper 0.1mg	10%

*The % Daily Value (DV) tells you how much a nutrient in a serving of food contributes to a daily diet. 2,000 calories a day is used for general nutrition advice.

INGREDIENTS: PRECOOKED PARBOILED BROWN RICE.

Riyana
 © 2019 RIVIANA FOODS INC.
 HOUSTON, TX 77019 U.S.A.
 Minute, We Can Help and Riyana and Minute Design are trademarks of Riyana Foods Inc.

GROWN IN THE USA RICE

Nutrition Facts

About 2 servings per container
Serving size 2.0 or 1/2 cup (40g dry rice mix & 1-2/3 Tbsp seasoning mix)

As packaged
Calories 190

	% DV	As prepared	% DV
Total Fat	0.5g 1%	6g 7%	7%
Saturated Fat	0g 0%	1g 6%	6%
Trans Fat	0g 0%	1g 6%	6%
Polyunsaturated Fat	0g 0%	1.5g 2.5g	
Monounsaturated Fat	0g 0%	2.5g 0%	0%
Cholesterol	0mg 0%	0mg 0%	0%
Sodium	780mg 34%	840mg 36%	36%
Total Carb.	42g 15%	42g 15%	15%
Dietary Fiber	2g 6%	2g 6%	6%
Total Sugars	2g 2g	2g 2g	
Incl. Added Sugars	<1g 1%	<1g 1%	1%
Protein	5g 6g	6g 6g	
Vitamin D	0mcg 0%	0mcg 0%	0%
Calcium	40mg 2%	40mg 2%	2%
Iron	1.5mg 8%	1.5mg 8%	8%
Potassium	150mg 2%	150mg 2%	2%
Thiamin	0.18mg 15%	0.18mg 15%	15%
Riboflavin	0.05mg 4%	0.05mg 4%	4%
Niacin	1.6mg 10%	1.6mg 10%	10%
Vitamin B6	0.17mg 10%	0.17mg 10%	10%
Folate DFE	100mcg 25%	100mcg 25%	25%
Folic Acid	(65mcg)	(65mcg)	

The % Daily Value (DV) tells you how much a nutrient in a serving of food contributes to a daily diet. 2,000 calories a day is used for general nutrition advice.

INGREDIENTS: Rice, wild rice, onions, hydrolyzed soy protein, salt, monosodium glutamate, maltodextrin, autolyzed yeast extract, sugar, garlic*, garlic, sunflower oil, caramel color, spices, hydrolyzed corn protein, ferric orthophosphate, yeast extract, niacinamide, hydrolyzed wheat protein, thiamin mononitrate, tocopherols (to preserve freshness), folic acid.

*Dried.
 CONTAINS SOY AND WHEAT INGREDIENTS. (43047-104-14)

Preferred Method RICE RANGE TOP DIRECTIONS

- WHAT YOU NEED -

- 1 TABLESPOON BUTTER OR MARGARINE
- 1 2/3 CUPS WATER

1 In a medium saucepan, combine rice mix, Special Seasonings, water and butter or margarine; bring to a boil.

2 Cover and reduce heat to low. Simmer 25 to 30 minutes or until rice is tender. Let stand 3 minutes before serving.

About 2 cups prepared. Enjoy!

See side panels for additional product information.

MAKE IT A MEAL

- EASY AS 1-2-3:**
1. STIR in chopped celery during last 5 minutes of simmering.
 2. ADD cooked chicken breast sliced into pieces once rice is fully cooked.
 3. TOP with shredded carrots before serving (optional).

Find more ideas at ricearr.com/recipes





Nutrition Facts

8 Servings Per Container
Serving Size 1 Cookie (31g)

Amount per serving	% Daily Value*
Calories 140	
Total Fat 4.5g	6%
Saturated Fat 2g	10%
Trans Fat 0g	
Cholesterol 5mg	2%
Sodium 100mg	4%
Total Carbohydrate 22g	8%
Dietary Fiber <1g	4%
Total Sugars 12g	
Includes 7g Added Sugars	14%
Protein 2g	

Vitamin D 0mcg 0% • Calcium 10mg 0%
Iron 0.7mg 4% • Potassium 80mg 2%

* The % Daily Value (DV) tells you how much a nutrient in a serving of food contributes to a daily diet. 2,000 calories a day is used for general nutrition advice.

MADE FROM: ENRICHED WHEAT FLOUR (FLOUR, NIACIN, REDUCED IRON, THIAMINE MONONITRATE, RIBOFLAVIN, FOLIC ACID), RAISINS, OATS, VEGETABLE OILS (PALM AND/OR SOYBEAN) AND HYDROGENATED SOYBEAN, SUGAR, FRUCTOSE BROWN SUGAR (SUGAR, INVERT SUGAR, MOLASSES), CONTAINS 2% OR LESS OF EGGS, CORNSTARCH, AMMONIUM BICARBONATE, SALT, BAKING SODA, NONFAT MILK, NATURAL FLAVOR, CINNAMON, SPICES, SOY LECITHIN. CONTAINS: WHEAT, EGGS, MILK, SOY.

PEPPERIDGE FARM, INC.
NORWALK, CT 06856

The ingredients from corn, soy, and sugar in this product come from genetically modified crops.

Learn more at pepperidgefarm.com

910001025662 7984-11-1722

BAKED IN U.S.A.

Satisfaction guaranteed.

For questions or comments,
please call 1-888-737-7374.

Thank you.

Nutrition Facts

About 10 servings per container
Serving size 2 Cookies (35g)

Amount per serving	% Daily Value*
Calories 180	
Total Fat 9g	12%
Saturated Fat 3.5g	18%
Trans Fat 0g	
Cholesterol <5mg	1%
Sodium 95mg	4%
Total Carbohydrate 24g	9%
Dietary Fiber <1g	2%
Total Sugars 14g	
Includes 13g Added Sugars	26%
Protein 2g	
Vitamin D 0mcg 0% • Calcium 0mg 0%	
Iron 0.9mg 4% • Potassium 50mg 0%	

* The % Daily Value (DV) tells you how much a nutrient in a serving of food contributes to a daily diet. 2,000 calories a day is used for general nutrition advice.

Ingredients: Enriched flour (wheat flour, niacin, reduced iron, vitamin B₁ [thiamin mononitrate], vitamin B₂ [riboflavin], folic acid), sugar, vegetable oil (soybean, palm and palm kernel oil with TBHQ for freshness), dextrose, cocoa processed with alkali.

Contains 2% or less of high fructose corn syrup, cocoa, eggs, salt, whey, baking soda, soy lecithin, butter (cream, salt), natural and artificial flavors.

CONTAINS WHEAT, EGG, MILK AND SOY INGREDIENTS.



3, 5



3, 8



Nutrition Facts

about 13 servings per container
Serving size 1/2 cup dry (40g)

Amount per serving
Calories 140

	% Daily Value*
Total Fat 2.5g	3%
Saturated Fat 0g	0%
Trans Fat 0g	0%
Polyunsaturated Fat 1g	
Monounsaturated Fat 1g	
Cholesterol 0mg	0%
Sodium 0mg	0%
Total Carbohydrate 27g	10%
Dietary Fiber 4g	14%
Soluble Fiber 2g	
Insoluble Fiber 2g	
Total Sugars 0g	0%
Includes 0g Added Sugars	0%
Protein 5g	
Vitamin D 0mcg	0%
Calcium 20mg	0%
Iron 1.7mg	10%
Potassium 140mg	2%

*The % Daily Value (DV) tells you how much a nutrient in a serving of food contributes to a daily diet. 2,000 calories a day is used for general nutrition advice.

INGREDIENTS: WHOLE GRAIN ROLLED OATS.
 DISTRIBUTED BY: Walmart Inc., Bentonville, AR 72716
 Store in a cool, dry place.



30644 1905 00F-100 101H

COOKING

STIRVEG

1. Boil water per pot.
2. Stir in oats.
3. Cook about 1 minute per ounce.

MICROWAVE

1. One serving.
2. Combine with microwave safe liquid.
3. Microwave in 15 second intervals. Stir between intervals. Cook until done.

Optimal Nutrition

- 1 cup cereal fiber
- 1 cup cereal starch
- 1 cup cereal hulls
- 1 cup cereal bran
- 1 cup cereal germ
- 1 cup cereal hulls
- 1 cup cereal bran
- 1 cup cereal germ
- 1 cup cereal hulls
- 1 cup cereal bran
- 1 cup cereal germ

COOKING

Heat oat to 150°F with sugar, salt and oil. Stir in milk and yeast. Stir in cereal. Cook for 10 minutes. Stir in brown sugar and brown. Serve at room temperature. Place cookies on a parchment lined tray. Yield: 42 cookies.

Nutrition Facts

Serving size 1 Meal (369g)

Amount per serving

Calories 260

	% Daily Value*
Total Fat 6g	8%
Saturated Fat 3.5g	18%
Trans Fat 0g	
Cholesterol 45mg	15%
Sodium 1040mg	45%
Total Carbohydrate 31g	11%
Dietary Fiber 5g	18%
Total Sugars 6g	
Includes 5g Added Sugars	10%
Protein 19g	24%
Vitamin D 0mcg	0%
Calcium 30mg	2%
Iron 0.7mg	4%
Potassium 750mg	15%

*The % Daily Value (DV) tells you how much a nutrient in a serving of food contributes to a daily diet. 2,000 calories a day is used for general nutrition advice.

INGREDIENTS: MASHED POTATOES (REHYDRATED POTATO FLAKES AND GRANULES [WATER, POTATOES, MONO- AND DIGLYCERIDES, CITRIC ACID, DISODIUM DIHYDROGEN PYROPHOSPHATE, BHT, SODIUM BISULFITE], BUTTER [CREAM, SALT], CREAM, SALT, FLAVORING), SWEET GRAVY (WATER, BROWN SUGAR, MODIFIED CORN STARCH, CONTAINS 2% OR LESS OF: CHICKEN FLAVOR [CHICKEN BROTH, SALT, CHICKEN FAT], CHICKEN GLACE [CHICKEN BROTH, COOKED CHICKEN, CHICKEN FAT, SALT, FLAVORINGS], BUTTER [CREAM, SALT], ONIONS, SALT, CHARDONNAY WINE, CANOLA OIL, GARLIC, SPICE), HONEY ROASTED TURKEY (TURKEY BREAST TENDERLOIN, WATER, HONEY, ISOLATED SOY PROTEIN PRODUCT [ISOLATED SOY PROTEIN, MODIFIED POTATO STARCH, CORN STARCH, CARRAGEENAN, SOY LECITHIN], OLIVE OIL, CHICKEN FLAVOR [MALTODEXTRIN, CHICKEN BROTH, SALT, FLAVORS], SALT, POTASSIUM CHLORIDE, POTASSIUM AND SODIUM PHOSPHATES, SEASONING [SPICE EXTRACTIVES WITH POLYSORBATE 80, CANOLA OIL, MEDIUM CHAIN TRIGLYCERIDES, PROPYLENE GLYCOL, FLAVORS, SOY LECITHIN]), CARROTS, BROCCOLI, WATER. CONTAINS: MILK, SOY.



Nutrition Facts

about 13 servings per container
Serving size 1/2 cup dry (40g)

Amount per serving
Calories 140

	% Daily Value*
Total Fat 2.5g	3%
Saturated Fat 0g	0%
Trans Fat 0g	0%
Polyunsaturated Fat 1g	
Monounsaturated Fat 1g	
Cholesterol 0mg	0%
Sodium 0mg	0%
Total Carbohydrate 27g	10%
Dietary Fiber 4g	14%
Soluble Fiber 2g	
Insoluble Fiber 2g	
Total Sugars 0g	
Includes 0g Added Sugars	0%
Protein 5g	
Vitamin D 0mcg 0%	Calcium 20mg 0%
Iron 1.7mg 10%	Potassium 140mg 2%

*The % Daily Value (DV) tells you how much a nutrient in a serving of food contributes to a daily diet. 2,000 calories a day is used for general nutrition advice.

INGREDIENTS: WHOLE GRAIN ROLLED OATS
DISTRIBUTED BY: Walmart Inc., Bentonville, AR 72716
 Store in a cool, dry place.



30644 1905 00F-100 101H

COOKING

1. Add water and stir.
2. Stir in oats.
3. Cook until tender, stir occasionally.

MACRONUTRIENTS

Carb Serving: 10g
 Protein Serving: 5g
 Fat Serving: 0g

DIRECTIONS
 Heat oat in 1.5 cups of water with splash of salt and vanilla for 5 minutes. Stir in brown sugar and rolled oats. Sprinkle with brown sugar and milk. Heat for 1 minute. Place in bowl. Yield: 2 bowls



Nutrition Facts
 about 20 servings per container
Serving size 1/4 cup (45g) dry
Calories per serving 160

Amount/serving	% Daily Value*	Amount/serving	% Daily Value*
Total Fat 0g	0%	Total Carbohydrate 36g	13%
Saturated Fat 0g	0%	Dietary Fiber <1g	2%
Trans Fat 0g	0%	Total Sugars 0g	
Cholesterol 0mg	0%	Includes 0g Added Sugars	0%
Sodium 0mg	0%	Protein 3g	

Vitamin D 0mcg 0% • Calcium 10mg 0% • Iron 1.9mg 10% • Potassium 50mg 0%
 Thiamine 0.26mg 20% • Niacin 1.9mg 10% • Folate 174mcg DFE (104mcg folic acid) 45%

INGREDIENTS: LONG GRAIN RICE ENRICHED WITH FERRIC PHOSPHATE, NIACIN, THIAMINE MONONITRATE, FOLIC ACID.
DISTRIBUTED BY: Walmart Inc., Bentonville, AR 72716

* The % Daily Value (DV) tells you how much a nutrient in a serving of food contributes to a daily diet. 2,000 calories a day is used for general nutrition advice.



3, 4, 7



Simply Orange®

100% ORANGE JUICE
GOOD SOURCE OF VITAMIN C, VITAMIN D & CALCIUM

Nutrition Facts

About 7 servings per container
Serving Size 8 fl oz (240 mL)

Amount Per Serving
Calories 110
% Daily Value

Total Fat 0g	0%
Sodium 0mg	0%
Total Carbohydrate 26g	9%
Total Sugars 23g	
Includes 0g Added Sugars	0%
Protein 2g	Not a significant source of protein

Vitamin D 2.5mg	16%	Calcium 350mg	25%
Potassium 450mg	10%	Vitamin C 90%	
Thiamin 8%		Niacin 2%	
Vitamin B6 4%		Folate 10%	
Magnesium 8%			

Not a significant source of saturated fat, trans fat, cholesterol, dietary fiber and iron.

CONTAINS ORANGE JUICE, LESS THAN 1% OF CALCIUM PHOSPHATE AND CALCIUM LACTATE (CALCIUM SOURCES, VITAMIN D).
*INGREDIENTS NOT FOUND IN REGULAR ORANGE JUICE.

PRODUCED FOR
SIMPLY ORANGE JUICE COMPANY
APOPA, FL 32003 U.S.A.
CONTAINS ORANGE JUICE FROM COUNTRIES IDENTIFIED ON BOTTLE RECI.
©2015 SIMPLY ORANGE JUICE COMPANY.

NO ADDED SUGAR†
PASTEURIZED
KEEP REFRIGERATED
SHAKE WELL
BEST IF USED WITHIN 7-10
DAYS AFTER OPENING.
PRODUCT QUESTIONS &
FRESH TASTE GUARANTEED
INFO CALL 1-800-871-2653.
www.simplyorangejuice.com
†NOT A REDUCED CALORIE FOOD.
SEE NUTRITION FACTS FOR SUGAR
& CALORIE CONTENT.

HI, ME 5¢



USDA58146 • USDA58147

SCAN HERE FOR MORE FOOD INFORMATION





Amount/Serving	% Daily Value
Total Fat 0g	0%
Sodium 150mg	6%
Total Carb. 21g	7%
Total Sugars 21g	
Incl 21g Added Sugars	41%
Protein 0g	
Potas 35mg † • Niacin 15% • Vit. B ₆ 15% Vit. B ₁₂ 35% • Magnesium †	

† *Not a significant source of sat. fat, trans fat, cholest., fiber, vit. D, calcium and iron.*
 ‡ Contains less than 2 percent of the Daily Value of these nutrients.



POWERADE
 WATER, HIGH FRUCTOSE CORN SYRUP, LESS THAN 1% OF CITRIC ACID, ELECTROLYTES (SALT), MONO- & POTASSIUM PHOSPHATE, MAGNESIUM AND CALCIUM CHLORIDES, BORN APICAL ANDIBAL FLAVORS, GELTYCEROL, ESTER OF ROSIN, YELLOW 5, AND 4, VITAMINS B3, B6, B12 (NACRYLAMIDE PHOSPHATE HYDROCHLORIDE, CYANOCOBALAMIN, ASORBIC ACID) TO PROTECT TASTE, CALSIUM DISODIUM, GEL. (NO SODIUM CALCIUM).
PRODUCED FOR THE COCA-COLA COMPANY
 ATLANTA, GEORGIA 30313

©2021 THE COCA-COLA COMPANY.
 "POWERADE" is a registered trademark of The Coca-Cola Company.

HI-ME 5¢ OR 10¢ MCCs
 PROOF OF PURCHASE 2021-00387 28 FL OZ

Nutrition Facts

Serving size 1 can

Amount per serving
Calories 230

	% Daily Value*
Total Fat 0g	0%
Sodium 370mg	16%
Total Carbohydrate 58g	21%
Total Sugars 54g	
Includes 54g Added Sugars	108%
Protein 0g	
Riboflavin (Vit. B2)	260%
Niacin (Vit. B3)	250%
Vitamin B6	240%
Vitamin B12	500%

Not a significant source of saturated fat, trans fat, cholesterol, dietary fiber, vitamin D, calcium, iron and potassium.
 *The % Daily Value (DV) tells you how much a nutrient in a serving of food contributes to a daily diet. 2,000 calories a day is used for general nutrition advice.

INGREDIENTS: CARBONATED WATER, SUGAR, GLUCOSE, CITRIC ACID, NATURAL FLAVORS, TAURINE, SODIUM CITRATE, COLOR ADDED, PANAX GINSENG EXTRACT, L-CARNITINE-L-TARTRATE, CAFFEINE, SORBIC ACID (PRESERVATIVE), BENZOIC ACID (PRESERVATIVE), MAGNAMIDE (VIT. B3), SUCRALOSE, SALT, D-GLUCURONOLACTONE, INOSITOL, GUARANA EXTRACT, PYRIDOXINE HYDROCHLORIDE (VIT. B6), RIBOFLAVIN (VIT. B2), MALTODEXTRIN, CYANOCOBALAMIN (VIT. B12).
 MANUFACTURED FOR MONSTER ENERGY COMPANY
 1 MONSTER WAY CORONA, CA 92879 U.S.A.
 © 2012 MONSTER ENERGY COMPANY

MONSTER ENERGY BLEND: GLUCOSE, TAURINE, PANAX GINSENG EXTRACT, L-CARNITINE, CAFFEINE, GLUCURONOLACTONE, INOSITOL, GUARANA EXTRACT, MALTODEXTRIN
CAFFEINE FROM ALL SOURCES: 160mg PER CAN
CONSUME RESPONSIBLY: NOT RECOMMENDED FOR CHILDREN. PEOPLE SENSITIVE TO CAFFEINE, PREGNANT WOMEN OR WOMEN WHO ARE NURSING.



Nutrition Facts

6 servings per container

Serving size 2 shells (28g)

Amount per serving

Calories 120

% Daily Value*

Total Fat 6g 8%

Saturated Fat 0g 0%

Trans Fat 0g

Polysaturated Fat 1g

Monounsaturated Fat 4g

Cholesterol 0mg 0%

Sodium 160mg 7%

Total Carbohydrate 16g 6%

Dietary Fiber 2g 7%

Total Sugars 0g

Includes 0g Added Sugars 0%

Protein 2g

Vitamin D 0mcg 0%

Calcium 133mg 10%

Iron 1mg 6%

Potassium 59mg 2%

*The % Daily Value tells you how much a nutrient in a serving of food contributes to a daily diet. 2,000 calories a day is used for general nutrition advice.

INGREDIENTS: WHOLE GRAIN YELLOW CORN, HIGH OLEIC CANOLA OIL, WATER, CORN FLOUR, SALT, HYDRATED LIME.

Nutrition Facts

8 servings per container

Serving size 1 tortilla (42g)

Amount per serving

Calories 60

% Daily Value*

Total Fat 2.5g 3%

Saturated Fat 1g 5%

Trans Fat 0g

Cholesterol 0mg 0%

Sodium 270mg 12%

Total Carbohydrate 19g 7%

Dietary Fiber 14g 50%

Total Sugars 0g

Includes 0g Added Sugars 0%

Protein 5g

Vitamin D 0mcg 0%

Calcium 60mg 4%

Iron 0.6mg 4%

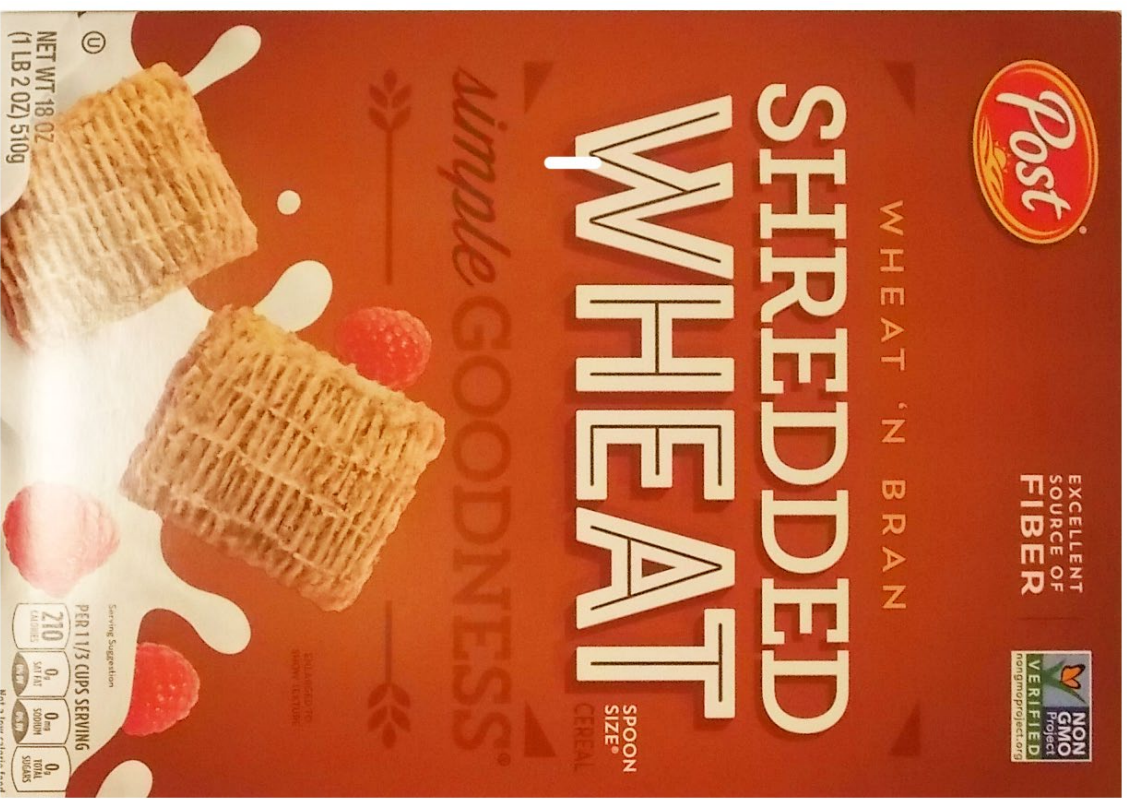
Potassium 20mg 0%

*The % Daily Value tells you how much a nutrient in a serving of food contributes to a daily diet. 2,000 calories a day is used for general nutrition advice.

INGREDIENTS: WATER, MODIFIED WHEAT STARCH, WHOLE WHEAT FLOUR, WHEAT GLUTEN, VEGETABLE SHORTENING (INTERESTERIFIED AND HYDROGENATED SOYBEAN OILS), WHEAT GLUTEN ISOLATE, CONTAINS 2% OR LESS OF: SALT, BAKING SODA, SODIUM ACID PHOSPHATE, CELLULOSE GUM, DISTILLED MONOGLYCERIDES, NATURAL FLAVOR, SUCRALOSE, CARAMEL COLOR, FUMARIC ACID, AND CALCIUM PROPIONATE AND SORBIC ACID (TO MAINTAIN FRESHNESS), CONTAINS: WHEAT



3



3

Nutrition Facts

About 9 servings per container
Serving size 1 1/3 cup (60g)

Amount per serving
Calories 210

% Daily Value*

Total Fat 1.5g	2%
Saturated Fat 0g	0%
Trans Fat 0g	
Polyunsaturated Fat 0.5g	
Monounsaturated Fat 0g	
Cholesterol 0mg	0%
Sodium 0mg	0%
Total Carbohydrate 49g	18%
Dietary Fiber 8g	30%
Soluble Fiber 1g	
Insoluble Fiber 7g	
Total Sugars 0g	
Includes 0g Added Sugars	0%

Protein 7g

Vitamin D 0mcg	0%
Calcium 20mg	0%
Iron 2.1mg	10%
Potassium 240mg	6%
Thiamin	10%
Riboflavin	6%
Niacin	20%
Folate	6%
Phosphorus	20%
Magnesium	15%
Zinc	15%

* The % Daily Value (DV) tells you how much a nutrient in a serving of food contributes to a daily diet. 2,000 calories a day is used for general nutrition advice.

Ingredients: Whole Grain Wheat, Wheat Bran. BHT added to preserve freshness.

CONTAINS WHEAT.

Nutrition Facts

1 serving per container
Serving size 1 package

Amount per serving
Calories 160

% Daily Value*

Total Fat 10g	13%
Saturated Fat 1.5g	7%
Trans Fat 0g	
Cholesterol 0mg	0%
Sodium 170mg	7%
Total Carbohydrate 15g	6%
Dietary Fiber 1g	5%
Total Sugars less than 1g	

Protein 2g

Vitamin D 0mcg	0%
Calcium 10mg	0%
Iron 0.6mg	2%
Potassium 350mg	6%
Vitamin C	6%

Not a significant source of added sugars.

* The % Daily Value (DV) tells you how much a nutrient in a serving of food contributes to a daily diet. 2,000 calories a day is used for general nutrition advice.

INGREDIENTS: POTATOES, VEGETABLE OIL (CANOLA, CORN, SOYBEAN, AND/OR SUNFLOWER OIL), AND SALT.



8



8



RED BULL® Energy Drink
 Red Bull is appreciated worldwide by top athletes, busy professionals, college students and long journeys.

8.4 FL OZ

Nutrition Facts
 Serving size 1 can

Amount per serving
Calories 110

Total Fat	0 g	0%
Sodium	105 mg	4%
Total Carbohydrate	29 g	10%
Total Sugars	27 g	
Includes 27 g Added Sugars		54%
Protein	0 g	

Calcium 30 mg 2% • Niacin 100% • Vitamin B6 250%
 Vitamin B12 80% • Pantothenic Acid 50%
 Contains a significant source of saturated fat, trans fat, cholesterol, dietary fiber, vitamin D, iron and potassium.
 *%DV = % Daily Value
 Children's content: 80 mg/8.4 fl oz.
 Not recommended for children, pregnant or nursing women and persons sensitive to caffeine.

Ingredients: Carbonated Water, Sugar, Glucose, Citric Acid, Taurine, Natural and Artificial Flavors, Sodium Bicarbonate (Baking Soda), Magnesium Carbonate, Colors, Caffeine, Nicotinamide, Pyridoxine HCl (Vitamin B6), Calcium Pantothenate, Vitamin B12.

Distributed by:
 Red Bull N.A., Inc.
 Santa Monica, CA 90404
 Made in Austria
 © 1996, 2013

11% LEMON JUICE

Nutrition Facts

Serv. Size: 1 Bottle

Amount Per Serving: **Calories 160**, Total Fat 0g (0% DV), Sodium 20mg (1% DV), Total Carb. 42g (15% DV), Total Sugars 40g, (Incl. 39g Added Sugars, 78% DV), Protein 0g.

Not a significant source of sat. fat, trans fat, cholest., fiber, vit. D, calcium, iron and potas.

CONTAINS PURE FILTERED WATER, LEMON JUICE, CANE SUGAR, NATURAL FLAVORS. PRODUCED FOR SIMPLY ORANGE JUICE COMPANY APOPKA, FL 32703 U.S.A. www.simplyorangejuice.com

VERY LOW SODIUM PASTEURIZED

BEST IF USED WITHIN 7-10 DAYS AFTER OPENING.
 **INGREDIENTS IN THIS BEVERAGE ARE NOT GENETICALLY ENGINEERED.

KEEP REFRIGERATED SHAKE WELL DO NOT REUSE QUESTIONS & FRESH TASTE GUARANTEED INFO CALL 1-800-871-2653. SE HABLA ESPAÑOL.

PLEASE RECYCLE 0021D 2017-00413 ♻️

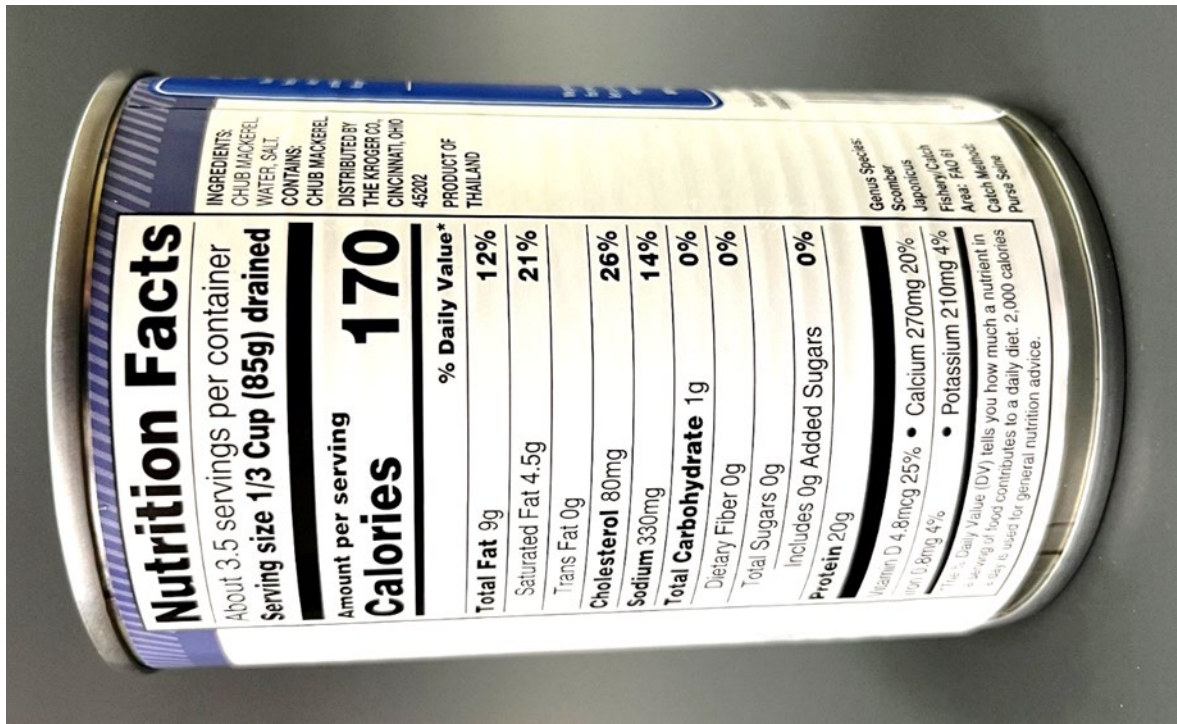
H.I.M.E 5¢, OR 10¢ **CA CRV** USD458147
 ©2018 SIMPLY ORANGE JUICE COMPANY.



7



7



Nutrition Facts

INGREDIENTS: CHUB MACKEREL, WATER, SALT, CONTAINS: CHUB MACKEREL.
 DISTRIBUTED BY THE KROGER CO., CINCINNATI, OHIO 45202
 PRODUCT OF THAILAND

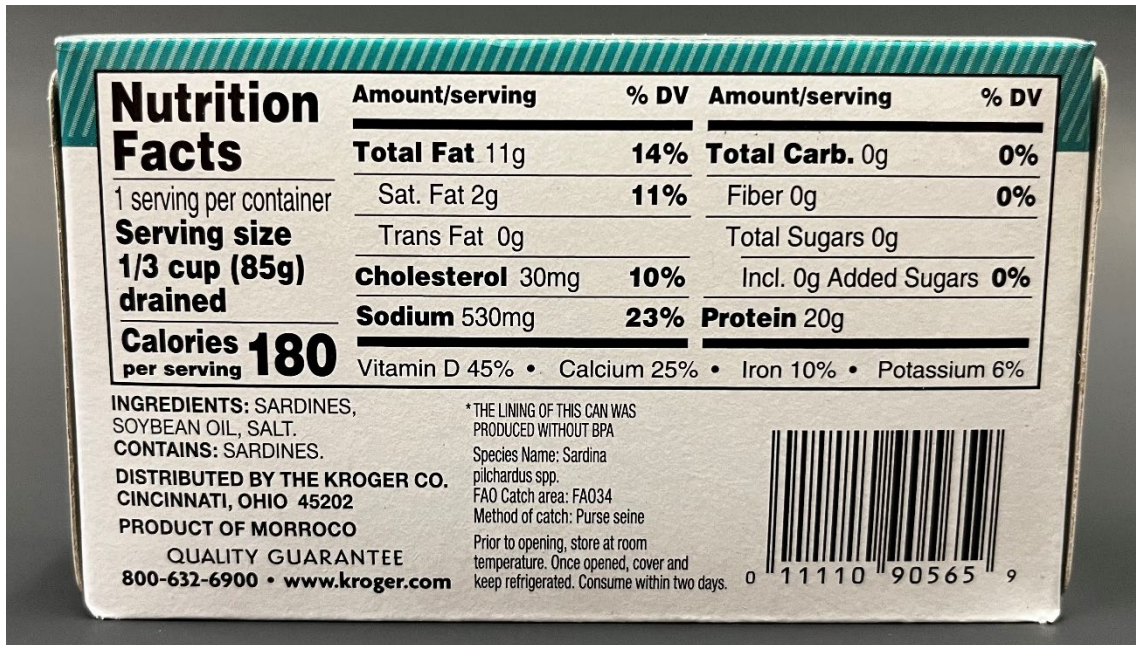
About 3.5 servings per container
 Serving size **1/3 Cup (85g) drained**

Amount per serving
Calories 170

	% Daily Value*
Total Fat 9g	12%
Saturated Fat 4.5g	21%
Trans Fat 0g	
Cholesterol 80mg	26%
Sodium 330mg	14%
Total Carbohydrate 1g	0%
Dietary Fiber 0g	0%
Total Sugars 0g	
Includes 0g Added Sugars	0%
Protein 20g	

Vitamin D 4.8mcg 25% • Calcium 270mg 20%
 Iron 0.8mg 4% • Potassium 210mg 4%
*Percent Daily Values (DV) tells you how much a nutrient in a serving of food contributes to a daily diet. 2,000 calories diet is used for general nutrition advice.

Genus Species
 Scomber
 Japonicus
 Fishery/Catch Area: FAO 31
 Purse Seine



Nutrition Facts

1 serving per container
 Serving size **1/3 cup (85g) drained**

Calories **180**
 per serving

Amount/serving	% DV	Amount/serving	% DV
Total Fat 11g	14%	Total Carb. 0g	0%
Sat. Fat 2g	11%	Fiber 0g	0%
Trans Fat 0g		Total Sugars 0g	
Cholesterol 30mg	10%	Incl. 0g Added Sugars	0%
Sodium 530mg	23%	Protein 20g	
Vitamin D 45% • Calcium 25% • Iron 10% • Potassium 6%			

INGREDIENTS: SARDINES, SOYBEAN OIL, SALT.
 CONTAINS: SARDINES.
 DISTRIBUTED BY THE KROGER CO., CINCINNATI, OHIO 45202
 PRODUCT OF MORROCO
 QUALITY GUARANTEE
 800-632-6900 • www.kroger.com

* THE LINING OF THIS CAN WAS PRODUCED WITHOUT BPA
 Species Name: Sardina pilchardus spp.
 FAO Catch area: FAO34
 Method of catch: Purse seine
 Prior to opening, store at room temperature. Once opened, cover and keep refrigerated. Consume within two days.





8



8

Nutrition Facts

About 14 servings per container
Serving size 2 tbsp (32g)

Amount Per Serving

Calories 190

% Daily Value*

Total Fat 16g 21%

Saturated Fat 3g 15%

Trans Fat 0g

Cholesterol 0mg 0%

Sodium 150mg 7%

Total Carbohydrate 6g 2%

Dietary Fiber 2g 7%

Sugars 3g

Includes 3g Added Sugars 6%

Protein 7g 7%

Vitamin D 0mcg 0%

Calcium 0mg 0%

Iron 0.4mg 2%

Potassium 94mg 2%

Vitamin E 1.5mg 10%

Niacin 3.2mg 20%

Copper 0mg

*The % Daily Value (DV) tells you how much a nutrient in a serving of food contributes to a daily diet. 2,000 calories a day is used for general nutrition advice.

Nutrition Facts

About 13 servings per container
Serving size 2 tbsp (32g)

Amount Per Serving

Calories 190

% Daily Value*

Total Fat 16g 21%

Saturated Fat 3.5g 18%

Trans Fat 0g

Cholesterol 0mg 0%

Sodium 150mg 7%

Total Carbohydrate 6g 2%

Dietary Fiber 2g 7%

Total Sugars 3g

Includes 3g Added Sugars 6%

Protein 7g

Vitamin D 0mcg 0%

Calcium 0mg 0%

Iron 0.4mg 2%

Potassium 94mg 2%

Vitamin A 0mcg 0%

Vitamin C 0mg 0%

Vitamin E 1.5mg 10%

Niacin 3.2mg 20%

Copper 0mg

*The % Daily Value (DV) tells you how much a nutrient in a serving of food contributes to a daily diet. 2,000 calories a day is used for general nutrition advice.

Ingredients: Roasted peanuts, sugar, hydrogenated vegetable oil (cottonseed, soybean and rapeseed oil) to prevent separation, salt.

Ingredients: Roasted peanuts, sugar, palm oil, salt.



8



8



Nutrition Facts
 Serving size 1 bottle
 Amount per serving
Calories 160

Total Fat 0g	0%
Sodium 5mg	0%
Total Carb. 42g	15%
Total Sugars 42g	
Incl. 42g Added Sugars	84%
Protein 0g	

Not a significant source of saturated fat, trans fat, cholesterol, dietary fiber, vitamin D, calcium, iron, and potassium.
 *% DV = % Daily Value

BREWED BLACK TEA*, SUGAR, CITRIC ACID.
 Caffeine content: 85mg/16.5 fl oz.
 *NATURFEST ALLIANCE CERTIFIED FUD OUT
 smonobee® MORE N' BLOBS
 We're here to help.
 Find us at
 Findus.com or
 888.817.2078

Scan for info
 Call for info
 1-866-817-2076

ME-HI-5C-DR-10C
 CA CRV

070(3178)-996-0000

1200028619

MANUFACTURED BY INDEPENDENT PRODUCERS FOR THE PEPSI/LIPTON TEA PARTNERSHIP, PURCHASE, NEW YORK 10577.
 © LIPTON, A DIVISION OF UNILEVER.
 REFRIGERATE AFTER OPENING

how2recycle.info
 Recycle 3 PLASTIC BOTTLE



GLUTEN FREE

Nutrition Facts
 Serving size 1 Bottle
 Amount per serving
Calories 160

Total Fat 0g	0%
Sodium 10mg	0%
Total Carb. 40g	15%
Total Sugars 40g	
Incl. 40g Added Sugars	79%
Protein 0g	

SHAKE IT THEN SHAKE THE BOTTLE TOO.
 SETTling IS NATURAL.
 REFRIGERATE AFTER OPENING

OUR REAL TEA STARTS WITH THE FINEST TEA LEAVES AND IS MADE FROM: FILTERED WATER, SUGAR, CITRIC ACID, TEA, NATURAL FLAVORS.
 PRODUCED UNDER THE AUTHORITY OF FAME LANE, FRISCO, TX 75004.
 SNAPPLE BEVERAGE CORP. 6425 HILL TOP
 SNAPPLE BEVERAGE CORP.
 © 2021 SNAPPLE BEVERAGE CORP.

1-800-762-7753 snapple.com

70082989

07618300311

CA CRV ME-HI 5c DR 10C



4



4

CONTAINS 5% JUICE

Nutrition Facts

2 servings per container
Serving size **8 fl oz (240 mL)**

	Per Serving		Per Bottle	
		% Daily Value		% Daily Value
Calories	60		120	
Total Fat	0g	0%	0g	0%
Sodium	190mg	8%	370mg	16%
Total Carb.	16g	6%	32g	11%
Total Sugars	14g		27g	
Incl. Added Sugars	12g	24%	24g	48%
Protein	0g		0g	
Vitamin C		100%		200%
Thiamin		15%		30%

Not a significant source of sat fat, trans fat, cholest, fiber, vit D, calcium, iron and potas.

CONTAINS: WATER, 2% OR LESS OF: CONCENTRATED ORANGE JUICE, CONCENTRATED TANGERINE JUICE, CONCENTRATED APPLE JUICE, CONCENTRATED LIME JUICE, CONCENTRATED GRAPEFRUIT JUICE, CITRIC ACID, ASCORBIC ACID (VITAMIN C), THIAMIN HYDROCHLORIDE (VITAMIN B1), NATURAL FLAVORS, MODIFIED CORNSTARCH, CANOLA OIL, SODIUM CITRATE, CELLULOSE GUM, SUCRALOSE, SODIUM HEXAMETAPHOSPHATE, POTASSIUM SORBATE TO PROTECT FLAVOR, YELLOW #5, YELLOW #6, CALCIUM DISODIUM EDTA TO PROTECT COLOR.

DIST. BY SUNNY DELIGHT BEVERAGES CO. STAMFORD, CT 06905. U.S.A.

DO NOT PURCHASE IF SEAL IS BROKEN. SEE BEST BY DATE ON BOTTLE. SHAKE WELL. QUESTIONS? COMMENTS? SUNNYD.COM

CA CRV
ME, HI 5¢
OR 10¢

Nutrition Facts

Per Bottle

	Per Bottle	% Daily Value
Calories	120	
Total Fat	0g	0%
Sodium	370mg	16%
Total Carb.	32g	11%
Total Sugars	27g	
Incl. Added Sugars	24g	48%
Protein	0g	
Vitamin C		200%
Thiamin		30%

CONTAINS: WATER, HIGH FRUCTOSE CORN SYRUP AND 2% OR LESS OF: CONCENTRATED ORANGE JUICE, CONCENTRATED TANGERINE JUICE, CONCENTRATED APPLE JUICE, CONCENTRATED LIME JUICE, CONCENTRATED GRAPEFRUIT JUICE, CITRIC ACID, ASCORBIC ACID (VITAMIN C), THIAMIN HYDROCHLORIDE (VITAMIN B1), NATURAL FLAVORS, MODIFIED CORNSTARCH, CANOLA OIL, SODIUM CITRATE, CELLULOSE GUM, SUCRALOSE, SODIUM HEXAMETAPHOSPHATE, POTASSIUM SORBATE TO PROTECT FLAVOR, YELLOW #5, YELLOW #6, CALCIUM DISODIUM EDTA TO PROTECT COLOR.

DIST. BY SUNNY DELIGHT BEVERAGES CO. STAMFORD, CT 06905. U.S.A.

DO NOT PURCHASE IF SEAL IS BROKEN
SEE BEST BY DATE ON BOTTLE
SHAKE WELL
QUESTIONS? COMMENTS? SUNNYD.COM

CA CRV
ME, HI 5¢
OR 10¢

PLEASE RECYCLE



CONTAINS 5% JUICE

Nutrition Facts

2 servings per container
Serving size **8 fl oz (240 mL)**

	Per Serving		Per Bottle	
		% Daily Value		% Daily Value
Calories	60		120	
Total Fat	0g	0%	0g	0%
Sodium	170mg	7%	330mg	14%
Total Carb.	16g	6%	31g	11%
Total Sugars	14g		28g	
Incl. Added Sugars	12g	25%	25g	49%
Protein	0g		0g	
Vitamin C		100%		200%
Thiamin		15%		30%

Not a significant source of sat fat, trans fat, cholest, fiber, vit D, calcium, iron and potas.

CONTAINS: WATER, 2% OR LESS OF: CONCENTRATED ORANGE JUICE, CONCENTRATED TANGERINE JUICE, CONCENTRATED APPLE JUICE, CONCENTRATED LIME JUICE, CONCENTRATED GRAPEFRUIT JUICE, CITRIC ACID, ASCORBIC ACID (VITAMIN C), THIAMIN HYDROCHLORIDE (VITAMIN B1), NATURAL AND ARTIFICIAL FLAVORS, MODIFIED CORNSTARCH, CANOLA OIL, CELLULOSE GUM, SUCRALOSE, SODIUM HEXAMETAPHOSPHATE, POTASSIUM SORBATE TO PROTECT FLAVOR, YELLOW #6, RED #40, CALCIUM DISODIUM EDTA TO PROTECT COLOR.

DIST. BY SUNNY DELIGHT BEVERAGES CO. STAMFORD, CT 06905. U.S.A.

DO NOT PURCHASE IF SEAL IS BROKEN. SEE BEST BY DATE ON BOTTLE. SHAKE WELL. QUESTIONS? COMMENTS? SUNNYD.COM

CA CRV
ME, HI 5¢
OR 10¢

Nutrition Facts

Per Bottle

	Per Bottle	% Daily Value
Calories	120	
Total Fat	0g	0%
Sodium	330mg	14%
Total Carb.	31g	11%
Total Sugars	28g	
Incl. Added Sugars	25g	49%
Protein	0g	
Vitamin C		200%
Thiamin		30%

CONTAINS: WATER, HIGH FRUCTOSE CORN SYRUP AND 2% OR LESS OF: CONCENTRATED ORANGE JUICE, CONCENTRATED TANGERINE JUICE, CONCENTRATED APPLE JUICE, CONCENTRATED LIME JUICE, CONCENTRATED GRAPEFRUIT JUICE, CITRIC ACID, ASCORBIC ACID (VITAMIN C), THIAMIN HYDROCHLORIDE (VITAMIN B1), NATURAL AND ARTIFICIAL FLAVORS, MODIFIED CORNSTARCH, CANOLA OIL, CELLULOSE GUM, SUCRALOSE, SODIUM HEXAMETAPHOSPHATE, POTASSIUM SORBATE TO PROTECT FLAVOR, YELLOW #6, RED #40, CALCIUM DISODIUM EDTA TO PROTECT COLOR.

DIST. BY SUNNY DELIGHT BEVERAGES CO. STAMFORD, CT 06905. U.S.A.

DO NOT PURCHASE IF SEAL IS BROKEN
SEE BEST BY DATE ON BOTTLE
SHAKE WELL
QUESTIONS? COMMENTS? SUNNYD.COM

CA CRV
ME, HI 5¢
OR 10¢

PLEASE RECYCLE
25919055





Plant's Based

Nutrition Facts

8 servings per container
Serving size 1 cup (240 mL)

Amount per serving
Calories 90

	% Daily Value*
Total Fat 3.5g	4%
Saturated Fat 0.5g	3%
Trans Fat 0g	
Polyunsaturated Fat 2g	
Monounsaturated Fat 0.5g	
Cholesterol 0mg	0%
Sodium 95mg	4%
Total Carbohydrate 9g	3%
Dietary Fiber 2g	7%
Total Sugars 6g	
Includes 5g Added Sugars	10%
Protein 7g	
Vitamin D 6mcg	30%
Calcium 300mg	25%
Iron 0.8mg	4%
Potassium 260mg	6%
Vitamin A 150mcg	15%
Riboflavin 0.51mg	40%
Vitamin B12 1.2mcg	50%

* The % Daily Value (DV) tells you how much a nutrient in a serving of food contributes to a daily diet; 2,000 calories a day is used for general nutrition advice.

INGREDIENTS: ORGANIC SOY BLEND (FILTERED WATER, ORGANIC SOYBEANS), ORGANIC CANE SUGAR, CALCIUM CARBONATE, SEA SALT, NATURAL FLAVORS, GELLAN GUM, VITAMIN A PALMITATE, VITAMIN D2, RIBOFLAVIN (VITAMIN B2) AND VITAMIN B12.

CONTAINS: SOY.

DISTRIBUTED BY:
 LUCERNE FOODS, INC.
 P.O. BOX 99
 PLEASANTON, CA
 94566-0099
 1-877-232-4271

Quality & Satisfaction
100% Guaranteed
 or Your Money Back



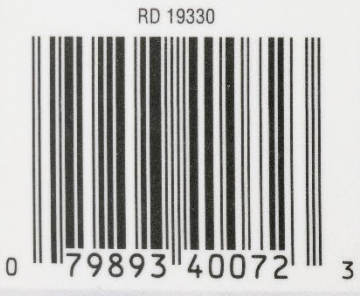
CERTIFIED ORGANIC BY
 QUALITY ASSURANCE
 INTERNATIONAL

NOT TO BE USED AS AN INFANT FORMULA
 ONCE OPENED, CONSUME WITHIN 7 DAYS
 PROCESSED AND PACKAGED
 AT PLANT STAMPED ON TOP
 ULTRA-PASTEURIZED
 CALCIUM, VITAMINS A, D, B2 & B12 ADDED
 DO NOT FREEZE



smartlabel
 Scan here for more
 food information

86999001A



NET WT.
16 OZ (1 LB)
453 g

INGREDIENTS: WATER, SOYBEANS, CALCIUM SULFATE, CALCIUM CHLORIDE.

Nutrition Facts
 About 5 servings per container
Serving size 3 oz (85g)
Calories 80
 per serving

Amount/Serving	%DV	Amount/Serving	%DV
Total Fat 4.5g	6%	Sodium 10mg	0%
Sat. Fat 0.5g	4%	Total Carb. 2g	1%
Trans Fat 0g		Fiber 2g	6%
Polyunsat. Fat 2.5g		Total Sugars 0g	
Monounsat. Fat 1g		Incl. 0g Added Sugars	0%
Cholest. 0mg	0%	Protein 8g	16%
Vitamin D 0% • Calcium 10% • Iron 8% • Potassium 2%			



8



8

Nutrition Facts

About 2 servings per container
Serving size 1 cup (244g)

	Per Serving		Per Can	
Calories	120	% DV*	270	% DV*
Total Fat	3g	4%	7g	9%
Saturated Fat	0.5g	3%	1g	5%
Trans Fat	0g		0g	
Cholesterol	0mg	0%	0mg	0%
Sodium	690mg	30%	1540mg	67%
Total Carbohydrate	22g	8%	49g	18%
Dietary Fiber	3g	10%	6g	22%
Total Sugars	9g		19g	
Incl. Added Sugars	4g	7%	8g	16%
Protein	2g		5g	
Vitamin D	0mcg	0%	0mcg	0%
Calcium	0mg	0%	50mg	4%
Iron	0.8mg	4%	1.8mg	8%
Potassium	810mg	15%	1800mg	40%

*The % Daily Value (DV) tells you how much a nutrient in a serving of food contributes to a daily diet. 2,000 calories a day is used for general nutrition advice.

Vegetarian

Ingredients: Tomato Puree (water, tomato paste), **Water.** Contains less than 2% of: Corn Syrup Solids, Corn Starch, Sugar, Soybean Oil, Modified Food Starch, Salt, Potassium Chloride, Garlic Powder, Dried Parsley, Basil, Natural Flavor, Citric Acid, Ascorbic Acid, Soy Lecithin.

CONTAINS SOY INGREDIENTS.

Nutrition Facts

	Per 1 cup % DV*		Per serving % DV*			Per 1 cup % DV*		Per serving % DV*	
Total Fat	1g	1%	2g	3%	Sodium	600mg	26%	1070mg	47%
Saturated Fat	0.5g	3%	1g	5%	Total Carb.	33g	12%	58g	21%
Trans Fat	0g		0g		Dietary Fiber	3g	11%	5g	18%
Polyunsaturated Fat	0.5g		1g		Total Sugars	12g		22g	
Monounsaturated Fat	0g		0g		Incl. Added Sugars	6g	12%	11g	22%
Cholesterol	< 5mg	2%	5mg	2%	Protein	6g		10g	
Vitamin D	0mcg	0%	0mcg	0%	Thiamin	0.2mg	15%	0.3mg	25%
Calcium	30mg	2%	50mg	4%	Riboflavin	0.2mg	15%	0.4mg	30%
Iron	1.5mg	8%	2.7mg	15%	Niacin	2.6mg	15%	4.7mg	30%
Potassium	270mg	6%	480mg	10%	Folate	110mcg DFE	30%	200mcg DFE	50%
Vitamin A	100mcg	10%	220mcg	25%		(65mcg folic acid)		(120mcg folic acid)	

*The % Daily Value (DV) tells you how much a nutrient in a serving of food contributes to a daily diet. 2,000 calories a day is used for general nutrition advice.

HEALTHY KIDS ENTRÉE

MEETS CLAIM PER 1 CUP

0g
4
20%

of Trans Fat Essential Nutrients of Daily
Per 1 Cup in the Pasta Vegetables†

†1 CUP OF CANNED PASTA = ½ CUP OF VEGETABLES. Dietary Guidelines recommend 2½ cups of a variety of vegetables per day for a 2,000 calorie diet.

INGREDIENTS: WATER, TOMATO PUREE (WATER, TOMATO PASTE), ENRICHED PASTA (WHEAT FLOUR, NIACIN, FERROUS SULFATE, THIAMINE MONONITRATE, RIBOFLAVIN, FOLIC ACID), HIGH FRUCTOSE CORN SYRUP, CONTAINS LESS THAN 2% OF: SALT, ENZYME MODIFIED CHEDDAR CHEESE (CHEDDAR CHEESE [CULTURED MILK, SALT, ENZYMES, CALCIUM CHLORIDE], WATER, DISODIUM PHOSPHATE, ENZYMES), VEGETABLE OIL (CORN, CANOLA, AND/OR SOYBEAN), ENZYME MODIFIED BUTTER, BETA CAROTENE FOR COLOR, CITRIC ACID, PAPRIKA EXTRACT, SKIM MILK, NATURAL FLAVORING.

CONTAINS: WHEAT, MILK.

CAMPBELL SOUP COMPANY, CAMDEN, NJ, U.S.A. 08103-1701
CONTAINS BIOENGINEERED FOOD INGREDIENTS.
THE CORN, SOY AND CANOLA IN THIS PRODUCT COME FROM GENETICALLY MODIFIED CROPS.

READY IN 3 MINUTES!
MICROWAVE: Microwave ovens vary. Time given is approximate.
1. Heat, covered, in microwavable bowl on HIGH 1½ to 2 min. or until hot.
2. Careful, leave in microwave 1 min., then stir.
STOVE: Heat, stirring occasionally.

Best if used by date on package. CAUTION: Metal edges are sharp. Promptly refrigerate unused product in separate container.
Questions or Comments?
Call us at 1-800-PASTA-02.
campbells.com/spaghetios

Remove & Insert Lid

 METAL CAN

how2recycle.info

5 1000 23283 0
 23283-5N
 910001031698



8



8

Nutrition Facts

8 Servings Per Container
Serving Size 1 Cookie (31g)

Amount per serving

Calories 140

% Daily Value*

Total Fat 4.5g **6%**

Saturated Fat 2g **10%**

Trans Fat 0g

Cholesterol 5mg **2%**

Sodium 100mg **4%**

Total Carbohydrate 22g **8%**

Dietary Fiber <1g **4%**

Total Sugars 12g

Includes 7g Added Sugars **14%**

Protein 2g

Vitamin D 0mcg **0%** • Calcium 10mg **0%**

Iron 0.7mg **4%** • Potassium 80mg **2%**

*The % Daily Value (DV) tells you how much a nutrient in a serving of food contributes to a daily diet. 2,000 calories a day is used for general nutrition advice.

MADE FROM: ENRICHED WHEAT FLOUR (FLOUR, NIACIN, REDUCED IRON, THIAMINE MONONITRATE, RIBOFLAVIN, FOLIC ACID), RAISINS, DOTS, VEGETABLE OILS (PALM AND/OR SOYBEAN) AND HYDROGENATED SOYBEAN, SUGAR, FRUCTOSE, BROWN SUGAR (SUGAR, INVERT SUGAR, MOLASSES), CONTAINS 2% OR LESS OF EGGS, CORNSTARCH, AMMONIUM BICARBONATE, SALT, BAKING SODA, NONFAT MILK, NATURAL FLAVOR, CINNAMON, SPICES, SOY LECITHIN. CONTAINS: WHEAT, EGGS, MILK, SOY.

PEPPERIDGE FARM, INC.
NORWALK, CT 06856

The ingredients from corn, soy, and sugar in this product come from genetically modified crops.
Learn more at pepperidgefarm.com

910001025662 7884-11-17E2

BAKED IN U.S.A.

Satisfaction guaranteed.
For questions or comments,
please call 1-888-737-7374.

Thank you.

Nutrition Facts

About 14 servings per container
Serving size 2 tbsp (24g)

Amount per serving
Calories 100

% Daily Value*

Total Fat 5g **7%**

Saturated Fat 3g **14%**

Trans Fat 0g

Cholesterol 0mg **0%**

Sodium 25mg **1%**

Total Carbohydrate 14g **5%**

Dietary Fiber 0g **0%**

Total Sugars 13g

Includes 13g Added Sugars **27%**

Protein 0g

Not a significant source of vitamin D, calcium, iron, and potassium.

*The % Daily Value (DV) tells you how much a nutrient in a serving of food contributes to a daily diet. 2,000 calories a day is used for general nutrition advice.

Ingredients: Sugar, Palm Oil, Water, Corn Syrup, Corn Starch. Contains 2% or less of:

Hydrogenated Palm Oil, Monoglycerides, Cellulose Gel, Salt, Polysorbate 80, Sodium Acid Pyrophosphate, Cellulose Gum, Natural and Artificial Flavor, Citric Acid, Color (yellows 5 & 6 and other color added). Freshness Preserved by Potassium Sorbate.

MAY CONTAIN MILK INGREDIENTS.

DIST. BY GENERAL MILLS SALES, INC., MINNEAPOLIS, MN 55440 USA

Contains Bioengineered Food Ingredients

Learn more at Ask.GeneralMills.com

© General Mills

GLUTEN FREE
Carbohydrate Choices: 1

STORE FROSTING IN COOL PLACE.

One 1/2 cup

or One 8 1/2 oz

2-3/4 cup

or 2 1/2 lb

• Contains

• Start on

• Cover

• Cover

• Cover

• Cover

• Cover

• Cover

• Cover

• Cover

• Cover

• Cover

• Cover

• Cover

• Cover

• Cover

• Cover

• Cover

• Cover

• Cover

• Cover

• Cover

• Cover

• Cover

• Cover

• Cover

• Cover

• Cover

• Cover

• Cover

• Cover

• Cover

• Cover



8



8

BEST BY: (MMDDYY)

020724 05:04 6TE 537

Nutrition Facts

2 servings per container
Serving size
1/2 noodle block with
1/2 flavoring packet (43g)

Calories
190 **370**
per serving per container

	Per serving % DV*	Per container % DV*
Total Fat	7g 9%	14g 18%
Saturated Fat	3.5g 18%	7g 35%
Trans Fat	0g	0g
Cholesterol	0mg 0%	0mg 0%
Sodium	760mg 33%	1,520mg 66%
Vitamin D	0mcg 0%	0mcg 0%
Calcium	0mg 0%	0mg 0%

	Per serving % DV*	Per container % DV*
Total Carb.	27g 10%	54g 20%
Dietary Fiber	1g 4%	2g 7%
Total Sugars	1g	2g
Incl. Added Sugars	<1g 1%	1g 2%
Protein	4g	8g
Iron	1.3mg 8%	2.6mg 15%
Potassium	0mg	0mg 0%

*The % Daily Value (DV) tells you how much a nutrient in a serving of food contributes to a daily diet. 2,000 calories a day is used for general nutrition advice.

RAMEN NOODLE INGREDIENTS: ENRICHED WHEAT FLOUR (WHEAT FLOUR, NIACIN, REDUCED IRON, THIAMINE MONONITRATE, RIBOFLAVIN, FOLIC ACID), VEGETABLE OIL (CONTAINS ONE OR MORE OF THE FOLLOWING: CANOLA, COTTONSEED, PEANUT, SAFFLOWER, SUNFLOWER), SALT, POTASSIUM CARBONATE, SOY SAUCE (WATER, WHEAT, SOYBEANS, SALT, SODIUM CARBONATE, SODIUM HEXAMETAPOSPHATE, SODIUM TRIPOLYPHOSPHATE, MONOSODIUM PHOSPHATE, POTASSIUM PHOSPHATE), SALT SUGAR, CONTAINS LESS THAN 1% OF: MONOSODIUM GLUTAMATE, MALTODEXTRIN, SPICES (CELERY SEED), HYDROLYZED CORN PROTEIN, HYDROLYZED WHEAT PROTEIN, HYDROLYZED SOY PROTEIN, TURMERIC, GARLIC POWDER, ONION POWDER, CHINESE GARDEN OF EDDY SPICES (CHINESE GARLIC, CHINESE GARDEN OF EDDY SPICES), YEAST EXTRACT, VEGETABLE OIL (PALM), LACTOSE, POWDERED COOKED CHICKEN. **RAMEN NOODLE INGREDIENTS:** ENRICHED WHEAT FLOUR (WHEAT FLOUR, NIACIN, REDUCED IRON, THIAMINE MONONITRATE, RIBOFLAVIN, FOLIC ACID), VEGETABLE OIL (CONTAINS ONE OR MORE OF THE FOLLOWING: CANOLA, COTTONSEED, PEANUT, SAFFLOWER, SUNFLOWER), SALT, POTASSIUM CARBONATE, SOY SAUCE (WATER, WHEAT, SOYBEANS, SALT, SODIUM CARBONATE, SODIUM HEXAMETAPOSPHATE, SODIUM TRIPOLYPHOSPHATE, MONOSODIUM PHOSPHATE, POTASSIUM PHOSPHATE), SALT SUGAR, CONTAINS LESS THAN 1% OF: MONOSODIUM GLUTAMATE, MALTODEXTRIN, SPICES (CELERY SEED), HYDROLYZED CORN PROTEIN, HYDROLYZED WHEAT PROTEIN, HYDROLYZED SOY PROTEIN, TURMERIC, GARLIC POWDER, ONION POWDER, CHINESE GARDEN OF EDDY SPICES (CHINESE GARLIC, CHINESE GARDEN OF EDDY SPICES), YEAST EXTRACT, VEGETABLE OIL (PALM), LACTOSE, POWDERED COOKED CHICKEN. **CONTAINS WHEAT, SOY, AND MILK INGREDIENTS. MANUFACTURED IN A FACILITY THAT ALSO PROCESSES CRUSTACEAN SHELLFISH AND SESAME PRODUCTS. CONTAINS A BIOENGINEERED FOOD INGREDIENT.**

Maruchan, INC.
IRVINE, CA 92618 MADE IN U.S.A.



www.maruchan.com © 2022 Maruchan, Inc. / V1

YOU MAY REDUCE THE AMOUNT OF SODIUM BY
SIMPLY USING LESS OF THE FLAVOR PACKET.
PLEASE STORE IN A DRY PLACE AWAY FROM
HEAT AND DIRECT SUNLIGHT.
WHEN CONTACTING US, PLEASE INCLUDE THE
PRINTED LOT NUMBER FOR INFORMATION.

DO NOT PURCHASE OR USE IF THE PACKAGING
IS OPEN, TORN, OR DAMAGED.

1. Turn off heat, add contents of flavor packet, stir well for 1 minute until flavoring is fully dissolved. Makes two 8 oz servings.
2. Turn off heat, add contents of flavor packet, stir well for 1 minute until flavoring is fully dissolved. Makes two 8 oz servings.
3. Product is very hot. Allow to cool, serve and enjoy.

CAUTION: PRODUCT IS EXTREMELY HOT. HANDLE CAREFULLY TO AVOID SPILLS AND SEVERE BURNS. AFTER PREPARATION, TEMPERATURE SHOULD BE MONITORED FOR CHILDREN UNDER 15 YEARS OLD. PRODUCT SHOULD BE CONSUMED AT A TABLE WITH ADULT SUPERVISION.

Nutrition Facts

about 3.5 servings per container
Serving size 1/2 cup (130g)

Amount per serving
Calories 140

	% Daily Value*
Total Fat 2.5g	3%
Sat. Fat 1g	5%
Sodium 320mg	14%
Total Carb. 22g	8%
Fiber 5g	18%
Total Sugars 1g	
Protein 7g	

Vit. D 0mcg 0% • Calcium 40mg 4%
Iron 2mg 10% • Potas. 480mg 10%

Not a significant source of trans fat, cholest., added sugars.
*The % Daily Value tells you how much a nutrient in a serving of food contributes to a daily diet. 2,000 calories a day is used for general nutrition advice.

INGREDIENTS: COOKED PINTO BEANS, WATER, LARD AND HYDROGENATED LARD, SALT, VINEGAR, SPICES, GARLIC POWDER, ONION POWDER, CHILI PEPPER.
DISTRIBUTED BY THE KROGER CO.
CINCINNATI, OHIO 45202



8



8

Nutrition Facts

About 14 servings per container
Serving size 2 tbsp (32g)

Amount Per Serving
Calories 190

% Daily Value*

Total Fat 16g **21%**

Saturated Fat 3g **15%**

Trans Fat 0g

Cholesterol 0mg **0%**

Sodium 150mg **7%**

Total Carbohydrate 6g **2%**

Dietary Fiber 2g **7%**

Sugars 3g

Includes 3g Added Sugars **6%**

Protein 7g **7%**

Vitamin D 0mcg **0%**

Calcium 0mg **0%**

Iron 0.4mg **2%**

Potassium 94mg **2%**

Vitamin E 1.5mg **10%**

Niacin 3.2mg **20%**

Copper 0mg

*The % Daily Value (DV) tells you how much a nutrient in a serving of food contributes to a daily diet. 2,000 calories a day is used for general nutrition advice.

Ingredients: Roasted peanuts, sugar, hydrogenated vegetable oil (cottonseed, soybean and rapeseed oil) to prevent separation, salt.



Nutrition Facts

About 38 servings per container
Serving size 1 Tbsp (12g)

Amount per serving
Calories 110

% Daily Value*

Total Fat 12g **15%**

Saturated Fat 3.5g **16%**

Trans Fat 0g

Polyunsaturated Fat 6g

Monounsaturated Fat 2.5g

Cholesterol 0mg **0%**

Sodium 0mg **0%**

Total Carbohydrate 0g **0%**

Protein 0g

Not a significant source of dietary fiber, total sugars, added sugars, vitamin D, calcium, iron and potassium.

* The % Daily Value tells you how much a nutrient in a serving of food contributes to a daily diet. 2,000 calories a day is used for general nutrition advice.

INGREDIENTS: SOYBEAN OIL, FULLY HYDROGENATED PALM OIL, PALM OIL, MONO AND DIGLYCERIDES, TBHQ AND CITRIC ACID (ANTIOXIDANTS).

©/TM/® THE J.M. SMUCKER COMPANY
ORRVILLE, OH 44667 USA

WARNING: Shortening will catch fire if overheated. Damage or serious burns may result.

DO heat shortening carefully, uncovered, on medium heat.

DO reduce heat if smoking occurs.

DO NOT leave unattended while heating.

DO NOT refill can with hot shortening.

IF SHORTENING CATCHES FIRE:

DO turn off heat.

DO cover pot until cooled to room temperature to avoid reignition.

DO NOT carry pot until cool.

DO NOT put water on hot or flaming shortening.

Classic #4 Crisco

2 cups all-purpose flour
1 teaspoon salt
3/4 cup well-chilled Crisco® all vegetable shortening
4 to 8 tablespoons ice cold water

BLEND flour and salt in large bowl until crumbly.
ADD shortening and water until crumbly.

DIVIDE dough in half. Shape into two 12-inch disks.

ROLL out each disk 2 inches larger than the crust. Fill crust according to recipe directions.

Makes 2 (9-inch) single crust or 1 (18-inch) double crust.

How To Substitute Crisco® Shortening For Butter Or Margarine

1 cup Crisco Shortening = 1 cup Butter or Margarine

Not intended for use as a spread.

GLUTEN FREE



triscuit

ORIGINAL

MADE WITH SEA SALT

Nutrition Facts

about 9 servings per container
Serving size **6 crackers (28g)**

Amount per serving
Calories 120

	% Daily Value*
Total Fat 3.5g	4%
Saturated Fat 0g	0%
<i>Trans</i> Fat 0g	
Cholesterol 0mg	0%
Sodium 160mg	7%
Total Carbohydrate 20g	7%
Dietary Fiber 3g	11%
Total Sugars 0g	
Includes 0g Added Sugars	0%
Protein 3g	
Vitamin D 0mcg	0%
Calcium 10mg	0%
Iron 1.4mg	8%
Potassium 120mg	2%

* The % Daily Value (DV) tells you how much a nutrient in a serving of food contributes to a daily diet. 2,000 calories a day is used for general nutrition advice.

INGREDIENTS: WHOLE GRAIN WHEAT, CANOLA OIL, SEA SALT.
CONTAINS: WHEAT.
MONDELEZ GLOBAL LLC, EAST HANOVER, NJ 07936 USA

NO ARTIFICIAL COLORS OR FLAVORS
NO CHOLESTEROL
0g SATURATED FAT (Contains 3g total fat per serving.)

Nutrition Facts

About 25 servings per container
Serving size **4 Crackers (14g)**

Amount per serving
Calories 70

	% Daily Value*
Total Fat 3g	4%
Saturated Fat 0g	0%
<i>Trans</i> Fat 0g	
Polyunsaturated Fat 2g	
Monounsaturated Fat 0.5g	
Cholesterol 0mg	0%
Sodium 125mg	5%
Total Carbohydrate 9g	3%
Dietary Fiber 0g	0%
Total Sugars 1g	
Includes 1g Added Sugars	2%
Protein <1g	
Vitamin D 0mcg 0%	• Calcium 0mg 0%
Iron 0.4mg 2%	• Potassium 10mg 0%

* The % Daily Value (DV) tells you how much a nutrient in a serving of food contributes to a daily diet. 2,000 calories a day is used for general nutrition advice.

Ingredients: Enriched flour (wheat flour, niacin, reduced iron, vitamin B1 (thiamin mononitrate), vitamin B2 (riboflavin), folic acid), soybean oil (with TBHQ for freshness), sugar. Contains 2% or less of salt, high fructose corn syrup, leavening (baking soda, sodium acid pyrophosphate, monocalcium phosphate), corn syrup, soy lecithin.
CONTAINS WHEAT AND SOY INGREDIENTS.



100% VEGETABLE JUICE

Nutrition Facts

Serving size **1 bottle**

Amount per serving

Calories 60

% Daily Value*

Total Fat 0g **0%**

Saturated Fat 0g **0%**

Trans Fat 0g

Cholesterol 0mg **0%**

Sodium 960mg **42%**

Total Carbohydrate 13g **5%**

Dietary Fiber 3g **11%**

Total Sugars 10g

Includes 0g Added Sugars **0%**

Protein 3g

Vitamin D 0mg **0%** • **Calcium** 51mg **4%**

Iron 1mg **6%** • **Potassium** 70mg **15%**

Vitamin A 270mg **30%** • **Vitamin C** 110mg **12%**

* The % Daily Value (DV) tells you how much a nutrient in a serving of food contributes to a daily diet. 2,000 calories a diet is used for general nutrition advice.

INGREDIENTS: VEGETABLE JUICE (WATER AND CONCENTRATED JUICES OF TOMATOES, CARROTS, CELERY, BEETS, PARSLEY, LETTUCE, WATERCRESS, SPINACH), SALT, VITAMIN C (ASCORBIC ACID), NATURAL FLAVORING, BETA CAROTENE, CITRIC ACID.

DISTRIBUTED BY: CAMPBELL SOUP COMPANY CAMDEN, NJ, U.S.A. 08103-1701



Vegan • Gluten Free

Nutrition Facts

Amount/serving % Daily Value

Total Fat 0g **0%**

Sodium 220mg **10%**

Total Carb. 1g **0%**

Protein 0g

Calories 0

about 17 servings

Serving size **1 oz. (28g/ about 3/4 spear)**

Calcium 20mg **2%** • **Potas.** 30mg **0%**

INGREDIENTS: FRESH CUCUMBERS, WATER, VINEGAR, CONTAINS LESS THAN 2% OF: SALT, DEHYDRATED GARLIC, CALCIUM CHLORIDE, DEHYDRATED RED BELL PEPPERS, SPICE, NATURAL DILL FLAVOR, NATURAL FLAVORS, GUM ARABIC, TURMERIC EXTRACT (COLOR).

DISTRIBUTED BY THE KROGER CO., CINCINNATI, OHIO 45202

QUALITY GUARANTEE • 800-632-6900 • WWW.KROGER.COM

NO High Fructose Corn Syrup



3, 8



8



Nutrition Facts

Amount/Serving	% Daily Value
Total Fat 0g	0%
Sodium 70mg	3%
Total Carb. 0g	0%
Total Sugars 0g	0%
Protein 0g	0%

Calories 0 per serving

0 from a significant source of sat. fat, trans fat, choles., fiber, vit. D, calcium, iron and potas.

CARBONATED WATER, CARAMEL COLOR, ASPARTAME, PHOSPHORIC ACID, POTASSIUM BENZOATE TO PROTECT TASTE, NATURAL FLAVORS, CITRIC ACID, CAFFEINE.

INGREDIENTS: BREWED STARBUCKS® COFFEE (WATER, COFFEE), REDUCED-FAT MILK, SUGAR, MALTODEXTRIN, PECTIN, NATURAL FLAVORS. DISTRIBUTED BY NORTH AMERICAN COFFEE PARTNERSHIP, PURCHASE, NY 10577 USA.

SERVING SUGGESTION: SHAKE WELL. SERVE CHILLED OR OVER ICE. FOR COMMENTS OR QUESTIONS, CALL 1-800-211-8307.



Vanilla

Flavored with Other Natural Flavors

Nutrition Facts Serving size: 1 bottle

Amount per serving: **Calories 290**, Total Fat 5g (6% DV), Saturated Fat 3g (15% DV), Trans Fat 0g, Cholesterol 20mg (7% DV), Sodium 290mg (13% DV), Total Carbohydrate 53g (19% DV), Dietary Fiber 0g (0% DV), Total Sugars 46g (Includes 32g Added Sugars; 64% DV), Protein 9g, Vitamin D 0mg (0% DV), Calcium 322mg (25% DV), Iron 0mg (0% DV), Potassium 646mg (15% DV).

INGREDIENTS: BREWED STARBUCKS® COFFEE (WATER, COFFEE), REDUCED-FAT MILK, SUGAR, MALTODEXTRIN, PECTIN, NATURAL FLAVORS. DISTRIBUTED BY NORTH AMERICAN COFFEE PARTNERSHIP, PURCHASE, NY 10577 USA.

SERVING SUGGESTION: SHAKE WELL. SERVE CHILLED OR OVER ICE. FOR COMMENTS OR QUESTIONS, CALL 1-800-211-8307.

Frappuccino.com

ME-H150 DEP
OR 100 PLEASE RECYCLE
CA CRV
Kb

0 12000 81331 3

SBK19-415389
TM © 2019 STARBUCKS COFFEE COMPANY. ALL RIGHTS RESERVED.



CONTAINS NO FRUIT JUICE

Nutrition Facts

Serving size 1 Bottle (591 mL)

Amount per serving

Calories 140

% Daily Value

Total Fat 0g 0%

Sodium 270mg 12%

Total Carbohydrate 36g 13%

Total Sugars 34g

Includes 34g Added Sugars 69%

Protein 0g

Potassium 80mg 0%

Not a significant source of saturated fat, trans fat, cholesterol, dietary fiber, vitamin D, calcium, and iron.

Water, sugar, dextrose, citric acid, natural and artificial flavor, salt, sodium citrate, monopotassium phosphate, modified food starch, glycerol ester of rosin, blue 1.

DIST. BY: THE GATORADE CO., P.O. BOX 049003, CHICAGO, IL 60604 ©2019 S-VC, Inc., GATORADE and G DESIGN are registered trademarks of S-VC, Inc. Comments? 1-800-884-2867 or visit gatorade.com REFRIGERATE AFTER OPENING.

Nutrition Facts

Serv. Size 1 Bottle

Amount Per Serving

Calories 100

% Daily Value

Total Fat 0g 0%

Sodium 0mg 0%

Total Carb. 27g 10%

Total Sugars 27g

Incl. 27g Added Sugars 54%

Protein 0g

Potassium † • Vitamin C 200%

Vitamin B₆ 100% • Vitamin B₁₂ 100%

Pantoic acid 100% • Magnesium †

Zinc 25% • Chromium 25%

† Not a significant source of sat. fat, trans fat, cholest., fiber, vit. D, calcium, iron, pots., and magnesium.

Ingredients: reverse osmosis water, crystalline fructose, less than 0.5% of vitamins C, B₆, B₁₂ (ascorbic acid, calcium pantothenate, pyridoxine hydrochloride, cyanocobalamin), electrolytes (calcium and magnesium bicarbonate and potassium phosphate), taurine, zinc gluconate, chromium polynicotinate, cane sugar, citric acid, natural flavors, vegetable juices (for color).

SCAN FOR INFO



smartlabel

made for glacéau, atlanta, ga 30313

CA CRV ©
CHINESE OR 10

© 2020 glacéau

MCCm
2020-01039
20 FL OZ



Smart & Reusable Cap
how2recycle.info



1-877-GLACÉAU



5



5

Nutrition Facts

about 36 servings per container
Serving size 5 crackers (15g)

Amount per serving
Calories 70

		% Daily Value*
Total Fat	2.5g	3%
Saturated Fat	0.5g	3%
<i>Trans</i> Fat	0g	
Cholesterol	0mg	0%
Sodium	120mg	5%
Total Carbohydrate	10g	4%
Dietary Fiber	less than 1g	3%
Total Sugars	2g	
Includes 2g Added Sugars		4%

Protein	1g	
Vitamin D	0mcg	0%
Calcium	20mg	0%
Iron	0.5mg	2%
Potassium	30mg	0%

* The % Daily Value (DV) tells you how much a nutrient in a serving of food contributes to a daily diet. 2,000 calories a day is used for general nutrition advice.

INGREDIENTS: UNBLEACHED ENRICHED FLOUR (WHEAT FLOUR, NIACIN, REDUCED IRON, THIAMINE MONONITRATE (VITAMIN B1), RIBOFLAVIN (VITAMIN B2), FOLIC ACID), WHOLE GRAIN WHEAT FLOUR, CANOLA OIL, SUGAR, PALM OIL, LEAVENING (CALCIUM PHOSPHATE AND/OR BAKING SODA), SALT, HIGH FRUCTOSE CORN SYRUP, SOY LECITHIN.

CONTAINS: WHEAT, SOY.

Reduced Fat Wheat Thins
contain 3.5g fat per serving compared to
5g in Original Wheat Thins

Nutrition Facts

about 8 servings per container
Serving size 16 pieces (29g)

Amount per serving
Calories 120

		% Daily Value*
Total Fat	3.5g	4%
Saturated Fat	0.5g	3%
<i>Trans</i> Fat	0g	
Cholesterol	0mg	0%
Sodium	200mg	9%
Total Carbohydrate	22g	8%
Dietary Fiber	3g	11%
Total Sugars	4g	
Includes 4g Added Sugars		8%

Protein	2g	
Vitamin D	0mcg	0%
Calcium	30mg	2%
Iron	0.9mg	4%
Potassium	90mg	0%

* The % Daily Value (DV) tells you how much a nutrient in a serving of food contributes to a daily diet. 2,000 calories a day is used for general nutrition advice.

INGREDIENTS: WHOLE GRAIN WHEAT FLOUR, SUGAR, CANOLA OIL, CORNSTARCH, MALT SYRUP (FROM CORN AND BARLEY), SALT, BERNERS STRIP, LEAVENING (CALCIUM PHOSPHATE AND BAKING SODA)

BHT ADDED TO PACKAGING MATERIAL TO PRESERVE FRESHNESS.

CONTAINS: WHEAT

MONDELEZ GLOBAL LLC, EAST HANOVER, NJ 07936 USA



5



5

Nutrition Facts

about 36 servings per container
Serving size 5 crackers (15g)

Amount per serving
Calories 70

		% Daily Value*
Total Fat	2.5g	3%
Saturated Fat	0.5g	3%
<i>Trans</i> Fat	0g	
Cholesterol	0mg	0%
Sodium	120mg	5%
Total Carbohydrate	10g	4%
Dietary Fiber	less than 1g	3%
Total Sugars	2g	
Includes 2g Added Sugars		4%

Protein	1g	
Vitamin D	0mcg	0%
Calcium	20mg	0%
Iron	0.5mg	2%
Potassium	30mg	0%

* The % Daily Value (DV) tells you how much a nutrient in a serving of food contributes to a daily diet. 2,000 calories a day is used for general nutrition advice.

INGREDIENTS: UNBLEACHED ENRICHED FLOUR (WHEAT FLOUR, NIACIN, REDUCED IRON, THIAMINE MONONITRATE (VITAMIN B1), RIBOFLAVIN (VITAMIN B2), FOLIC ACID), WHOLE GRAIN WHEAT FLOUR, CANOLA OIL, SUGAR, PALM OIL, LEAVENING (CALCIUM PHOSPHATE AND/OR BAKING SODA), SALT, HIGH FRUCTOSE CORN SYRUP, SOY LECITHIN.

CONTAINS: WHEAT, SOY.

Reduced Fat Wheat Thins
contain 3.5g fat per serving compared to
5g in Original Wheat Thins

Nutrition Facts

about 8 servings per container
Serving size 16 pieces (29g)

Amount per serving
Calories 120

		% Daily Value*
Total Fat	3.5g	4%
Saturated Fat	0.5g	3%
<i>Trans</i> Fat	0g	
Cholesterol	0mg	0%
Sodium	200mg	9%
Total Carbohydrate	22g	8%
Dietary Fiber	3g	11%
Total Sugars	4g	
Includes 4g Added Sugars		8%

Protein	2g	
Vitamin D	0mcg	0%
Calcium	30mg	2%
Iron	0.9mg	4%
Potassium	90mg	0%

* The % Daily Value (DV) tells you how much a nutrient in a serving of food contributes to a daily diet. 2,000 calories a day is used for general nutrition advice.

INGREDIENTS: WHOLE GRAIN WHEAT FLOUR, SUGAR, CANOLA OIL, CORNSTARCH, MALT SYRUP (FROM CORN AND BARLEY), SALT, BERNER'S STRIP, LEAVENING (CALCIUM PHOSPHATE AND BAKING SODA)

BHT ADDED TO PACKAGING MATERIAL TO PRESERVE FRESHNESS.

CONTAINS: WHEAT

MONDELEZ GLOBAL LLC, EAST HANOVER, NJ 07936 USA



8



5



Nutrition Facts	Per serving		Per 1 slice		Per serving		Per 1 slice		
		% DV*		% DV*		% DV*		% DV*	
10 Servings Per Container									
Serving Size 2 Slices (57g)									
Calories 130 Per Serving									
70 Per 1 Slice									
Total Fat	1.5g	2%	1g	1%	Sodium	270mg	12%	135mg	6%
Saturated Fat	0g	0%	0g	0%	Total Carbohydrate	26g	9%	13g	5%
Trans Fat	0g		0g		Dietary Fiber	3g	11%	1g	4%
Polyunsaturated Fat	0.5g		0g		Total Sugars	2g		1g	
Monounsaturated Fat	0g		0g		Incl. Added Sugars	2g	4%	1g	2%
Cholesterol	0mg	0%	0mg	0%	Protein	5g		3g	
Vitamin D	1.2mcg	6%	0.6mcg	2%	Thiamin	0.2mg	15%	0.1mg	8%
Calcium	300mg	25%	150mg	10%	Riboflavin	0.1mg	10%	0.1mg	6%
Iron	1.3mg	8%	0.7mg	4%	Niacin	1.9mg	10%	0.9mg	6%
Potassium	70mg	0%	35mg	0%	Folate DFE (folic acid)	60mcg (30mcg)	15% (15mcg)	30mcg (15mcg)	8%

*The % Daily Value (DV) tells you how much a nutrient in a serving of food contributes to a daily diet. 2,000 calories a day is used for general nutrition advice.

INGREDIENTS: ENRICHED WHEAT FLOUR (FLOUR, MALTED BARLEY FLOUR, REDUCED IRON, NIACIN, THIAMIN MONONITRATE (VITAMIN B1), RIBOFLAVIN (VITAMIN B2), FOLIC ACID), WATER, WHOLE GRAIN WHEAT FLOUR, SUGAR, YEAST, WHEAT GLUTEN, CELLULOSE FIBER, CALCIUM SULFATE, SALT, VEGETABLE OIL (SOYBEAN), PRESERVATIVES (CALCIUM PROPIONATE, SORBIC ACID), SOY FLOUR, MONOGLYCERIDES, DATEM, CITRIC ACID, SOY LECITHIN, VITAMIN D3, GRAIN VINEGAR, MONOCALCIUM PHOSPHATE.
R21-102-202308
CONTAINS WHEAT, SOY.
MADE IN A BAKERY THAT MAY ALSO USE MILK, TREE NUTS.



3, 8



3, 5

Vanilla

Flavored with Other Natural Flavors

Nutrition Facts

Serving size: 1 bottle

Amount per serving: **Calories 290**, Total Fat 5g (6% DV), Saturated Fat 3g (15% DV), Trans Fat 0g, **Cholesterol 20mg** (7% DV), **Sodium 290mg** (13% DV), **Total Carbohydrate 53g** (19% DV), Dietary Fiber 0g (0% DV), Total Sugars 46g (Includes 32g Added Sugars, 64% DV), **Protein 9g**, Vitamin D 0mg (0% DV), Calcium 32mg (25% DV), Iron 0mg (0% DV), Potassium 646mg (15% DV).

INGREDIENTS: BREWED STARBUCKS® COFFEE (WATER, COFFEE), REDUCED-FAT MILK, SUGAR, MALTODEXTRIN, PECTIN, NATURAL FLAVORS. DISTRIBUTED BY NORTH AMERICAN COFFEE PARTNERSHIP, PURCHASE, NY 10577 USA. SERVING SUGGESTION: SHAKE WELL, SERVE CHILLED OR OVER ICE. FOR COMMENTS OR QUESTIONS, CALL 1-800-211-8307.

frappuccino.com

ME-H150 DEP
OR 100 PLEASE
RECYCLE
CA CRV

TM © 2019 STARBUCKS COFFEE COMPANY. ALL RIGHTS RESERVED.



Nutrition Facts

Serving Size 2 oz (56g)
Servings Per Container about 8

Amount Per Serving

Calories 180 Calories from Fat 15

% Daily Value*

Total Fat 1.5g **2%**

Saturated Fat 0g **0%**

Trans Fat 0g

Cholesterol 0mg **0%**

Sodium 0mg **0%**

Total Carbohydrate 39g **13%**

Dietary Fiber 6g **24%**

Soluble Fiber 1g

Insoluble Fiber 5g

Sugars 2g

Protein 8g

Iron 20% • Thiamin 15%

Niacin 25% • Folate 4%

Phosphorus 25% • Magnesium 20%

Manganese 80%

Not a significant source of vitamin A, vitamin C, and calcium.

*Percent Daily Values are based on a diet of other people's misdeeds.

Percent Daily Values are based on a diet of other people's misdeeds.

Percent Daily Values are based on a diet of other people's misdeeds.

Percent Daily Values are based on a diet of other people's misdeeds.

Percent Daily Values are based on a diet of other people's misdeeds.

Percent Daily Values are based on a diet of other people's misdeeds.

Percent Daily Values are based on a diet of other people's misdeeds.

Percent Daily Values are based on a diet of other people's misdeeds.

Percent Daily Values are based on a diet of other people's misdeeds.

Percent Daily Values are based on a diet of other people's misdeeds.

Percent Daily Values are based on a diet of other people's misdeeds.

Percent Daily Values are based on a diet of other people's misdeeds.

Percent Daily Values are based on a diet of other people's misdeeds.

Percent Daily Values are based on a diet of other people's misdeeds.

Percent Daily Values are based on a diet of other people's misdeeds.

Percent Daily Values are based on a diet of other people's misdeeds.

Percent Daily Values are based on a diet of other people's misdeeds.

Percent Daily Values are based on a diet of other people's misdeeds.

Percent Daily Values are based on a diet of other people's misdeeds.

Percent Daily Values are based on a diet of other people's misdeeds.

Percent Daily Values are based on a diet of other people's misdeeds.

INGREDIENTS: WHOLE GRAIN DURUM WHEAT FLOUR. CONTAINS WHEAT INGREDIENTS.



5



3, 5

Nutrition Facts

8 servings per container
Serving size 2 oz (56g)

Amount Per Serving

Calories 200

% Daily Value*

Total Fat	1g	1%
Saturated Fat	0g	0%
Trans Fat	0g	
Cholesterol	0mg	0%
Sodium	0mg	0%
Total Carbohydrate	4g	15%
Dietary Fiber	3g	11%
Soluble Fiber	2g	
Insoluble Fiber	1g	
Total Sugars	1g	
Protein	7g	

Vitamin D	0mcg	0%
Calcium	12mg	0%
Iron	2mg	10%
Potassium	118mg	2%
Thiamin	0.5mg	40%
Riboflavin	0.2mg	15%
Niacin	5mg	30%
Folate	199mcg DFE	50%
(112mcg folic acid)		

Not a significant source of added sugars.

* The % Daily Value tells you how much a nutrient in a serving of food contributes to a daily diet. 2,000 calories a day is used for general nutrition advice.

INGREDIENTS: SEMOLINA

(WHEAT), DURUM WHEAT FLOUR,

VITAMINS/MINERALS:

VITAMIN B3 (NIAICIN), IRON

(FERROUS SULFATE), VITAMIN

B1 (THIAMINE MONONITRATE),

VITAMIN B2 (RIBOFLAVIN),

FOLIC ACID.

CONTAINS WHEAT INGREDIENTS.

Nutrition Facts

Serving Size 2 oz (56g)
Servings Per Container about 8

Amount Per Serving

Calories 180 Calories from Fat 15

% Daily Value*

Total Fat	1.5g	2%
Saturated Fat	0g	0%
Trans Fat	0g	
Cholesterol	0mg	0%
Sodium	0mg	0%
Total Carbohydrate	39g	13%
Dietary Fiber	6g	24%
Soluble Fiber	1g	
Insoluble Fiber	5g	
Sugars	2g	
Protein	8g	

Iron	20%	• Thiamin	15%
Niacin	25%	• Folate	4%
Phosphorus	25%	• Magnesium	20%
Manganese	80%		

Not a significant source of vitamin A, vitamin C and calcium.

* Percent Daily Values are based on a 2,000 calorie diet. Your daily values may be higher or lower depending on your calorie needs:

	Calories:	2,000	2,500
Total Fat	Less than	65g	80g
Sat Fat	Less than	20g	25g
Cholesterol	Less than	300mg	300mg
Sodium	Less than	2,400mg	2,400mg
Total Carbohydrate		300g	375g
Dietary Fiber		25g	30g

Calories per gram:
Fat 9 • Carbohydrate 4 • Protein 4

**INGREDIENTS: WHOLE GRAIN DURUM
WHEAT FLOUR.
CONTAINS WHEAT INGREDIENTS.**



Nutrition Facts

About 75 servings per container
Serving size 1/4 cup (30g)

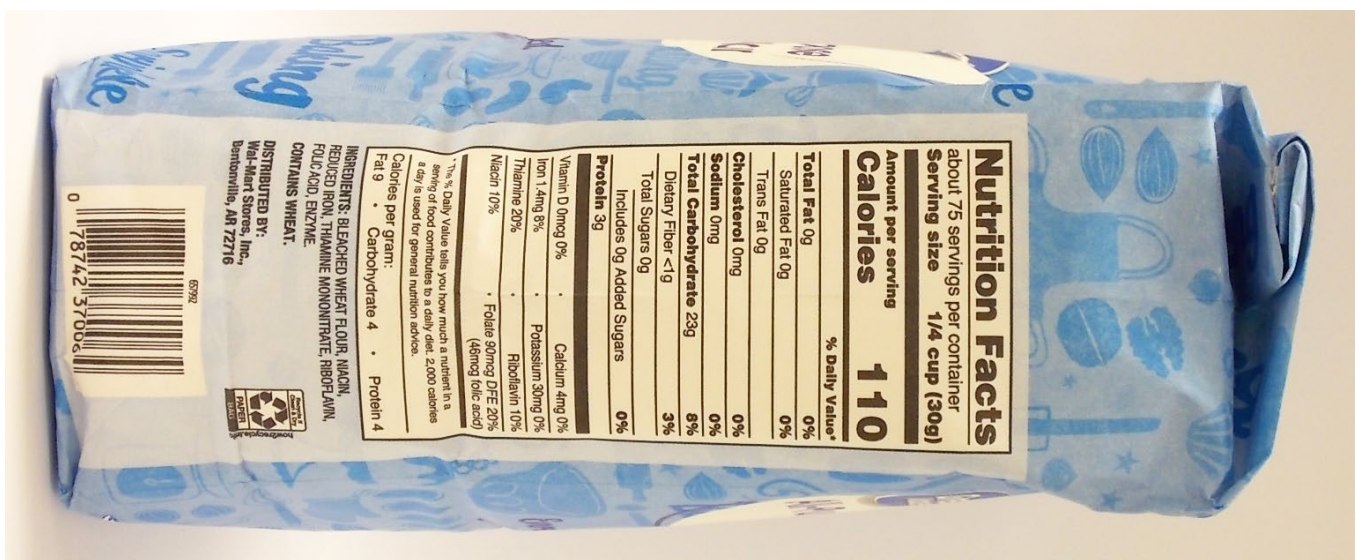
Amount per serving
Calories 100

	% Daily Value*
Total Fat 0.5g	1%
Saturated Fat 0g	0%
Trans Fat 0g	
Polyunsaturated Fat 0g	
Monounsaturated Fat 0g	
Cholesterol 0mg	0%
Sodium 0mg	0%
Total Carbohydrate 21g	8%
Dietary Fiber 3g	11%
Total Sugars 0g	
Includes 0g Added Sugars	0%
Protein 4g	
Iron 0.6mg	4%
Potassium 110mg	2%
Thiamin 0.2mg	15%
Riboflavin 0.04mg	2%
Niacin 1.3mg	8%
Folate 10mcg DFE	2%

Not a significant source of vitamin D, calcium and folic acid.

*The % Daily Value (DV) tells you how much a nutrient in a serving of food contributes to a daily diet. 2,000 calories a day is used for general dieting.

Ingredients: Whole Wheat Flour.



Nutrition Facts

about 75 servings per container
Serving size 1/4 cup (30g)

Amount per serving
Calories 110

	% Daily Value*
Total Fat 0g	0%
Saturated Fat 0g	0%
Trans Fat 0g	
Cholesterol 0mg	0%
Sodium 0mg	0%
Total Carbohydrate 23g	8%
Dietary Fiber <1g	3%
Total Sugars 0g	
Includes 0g Added Sugars	0%
Protein 3g	
Vitamin D 0mg 0%	Calcium 4mg 0%
Iron 1.4mg 8%	Potassium 30mg 0%
Thiamine 20%	Riboflavin 10%
Niacin 10%	Folate 90mcg DFE 20% (46mcg folic acid)

*The % Daily Value tells you how much a nutrient in a serving of food contributes to a daily diet. 2,000 calories a day is used for general nutrition advice.

Calories per gram:
 Fat 9 • Carbohydrate 4 • Protein 4

INGREDIENTS: BLEACHED WHEAT FLOUR, NIACIN, REDUCED IRON, THIAMINE MONONITRATE, RIBOFLAVIN, FOLIC ACID, ENZYME
CONTAINS WHEAT.

DISTRIBUTED BY:
 Mill-Meal Stores, Inc.,
 Bentonville, AR 72716

